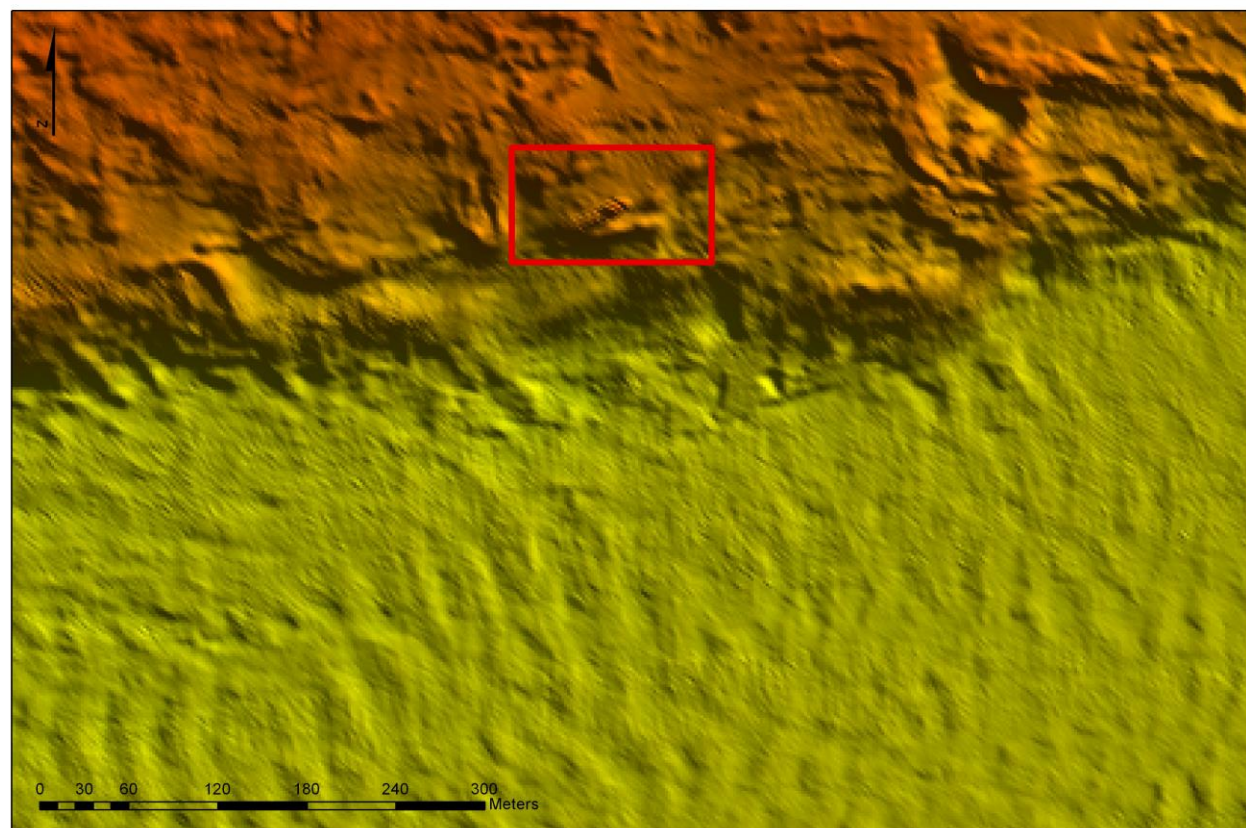


Below: 2m NE shaded relief image showing the position of the SS Premier, CV09_01 Shannon



LOCATION

Location 2 km NW of Beal Point

Coordinates -9° 38' 31.2" W
52° 35' 31.8" N

Depth of Water 21.6 m

VESSEL INFORMATION

Vessel type Steam Coaster

Flag British

Vessel Dimensions 53.4 m (l),
8.32 m (b), 4.0 m (d)

Date of building 1894

DETAILS OF SINKING

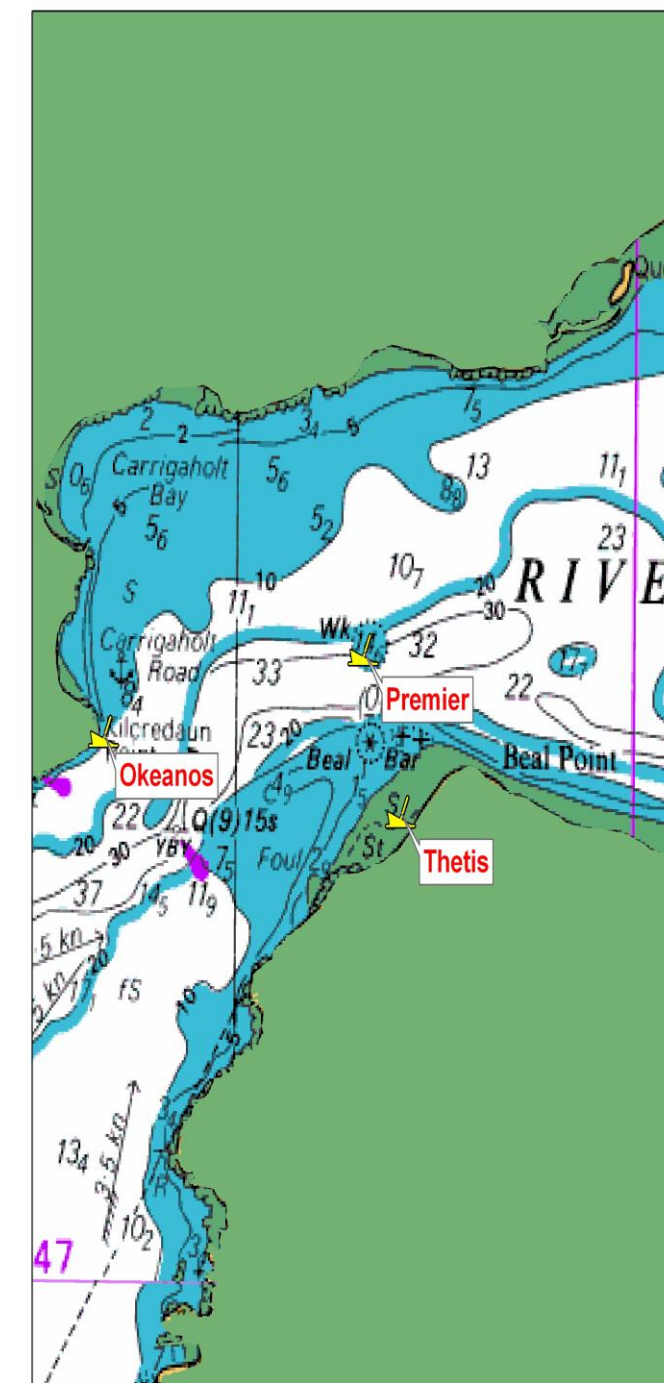
Date of loss 26/11/1898

VESSEL HISTORY

The SS Premier was a 537-ton British cargo steamship built in 1894 by J. Shearer & Sons, Kelvinhaugh, Glasgow. It measured 53m long and 7.9m in breadth and had a two cylinder steam compound engine with one boiler. It was owned by J. Simpson of Glasgow at the time of its loss.



SS PREMIER



INFOMAR
WRECK INFORMATION SHEET 5

CIRCUMSTANCES OF LOSS

The *SS Premier* was under charter to the Limerick Steamship Company with a 600 ton cargo of sugar for Messrs Cleeve of Limerick when lost. The steam coaster was captained by Murray and had a crew of 14. The *SS Premier* was on the final leg of its journey from Hamburg to Limerick when it was involved in a collision with the paddle steamer, *Mermaid* between Scatterry Island and Kilcredaun Point. It is unclear how the collision happened but the *Mermaid* which was outbound from Limerick to Waterford struck the *SS Premier* on the port side and tearing open her plates. The *Premier* sank within fifteen minutes and its crew took to the boats and were picked up by a passing steamer. The *Mermaid's* bow was badly damaged and was forced to return to Limerick for repairs. The wreck of the *Premier* is now known locally as the 'Sugar Boat'.

DIVE INFORMATION

The wreck is orientated NE-SW on the seabed in a general sea depth of 21m. It measures 53.4 m (l) x 8.32 m (b) x 4.0 m (d). The site is subject to strong tidal currents and is located in the main shipping channel.

Wrecks over 100 years old and archaeological objects found underwater are protected under the National Monuments (Amendment) Acts 1987 and 1994. Significant wrecks less than 100 years old can be designated by Underwater Heritage Order (UHO) on account of their historical, archaeological or artistic importance

As the *SS Premier* is over 100 years old, it is protected and a license is required to dive the site which can be obtained from:

<https://www.archaeology.ie/licences/dive-survey-licence>

ABOUT INFOMAR

Covering some 125,000 square kilometres of underwater territory, INFOMAR (the **IN**tegrated Mapping **FO**r the Sustainable Development of Ireland's **MAR**ine Resource) project will produce integrated mapping products covering the physical, chemical and biological features of the seabed. INFOMAR will initially focus on 26 priority bays and three priority areas around the coast delivering: hydrographic maps, illustrating everything from sandbars to underwater canyons and cliffs; seabed classification maps showing the type of sediment on the seabed. INFOMAR provides key baseline data to support coastal and inshore development. Making this information available to the world aims to stimulate research and development of Ireland's 220 million acres under the sea. The data will be of interest to fisheries managers, aquaculture operators, coastal zone managers and engineers, offshore engineering interests, licensing authorities and those carrying out environmental impact assessments. Indeed this unique dataset is of interest in its own right because of the sheer volume of data collected

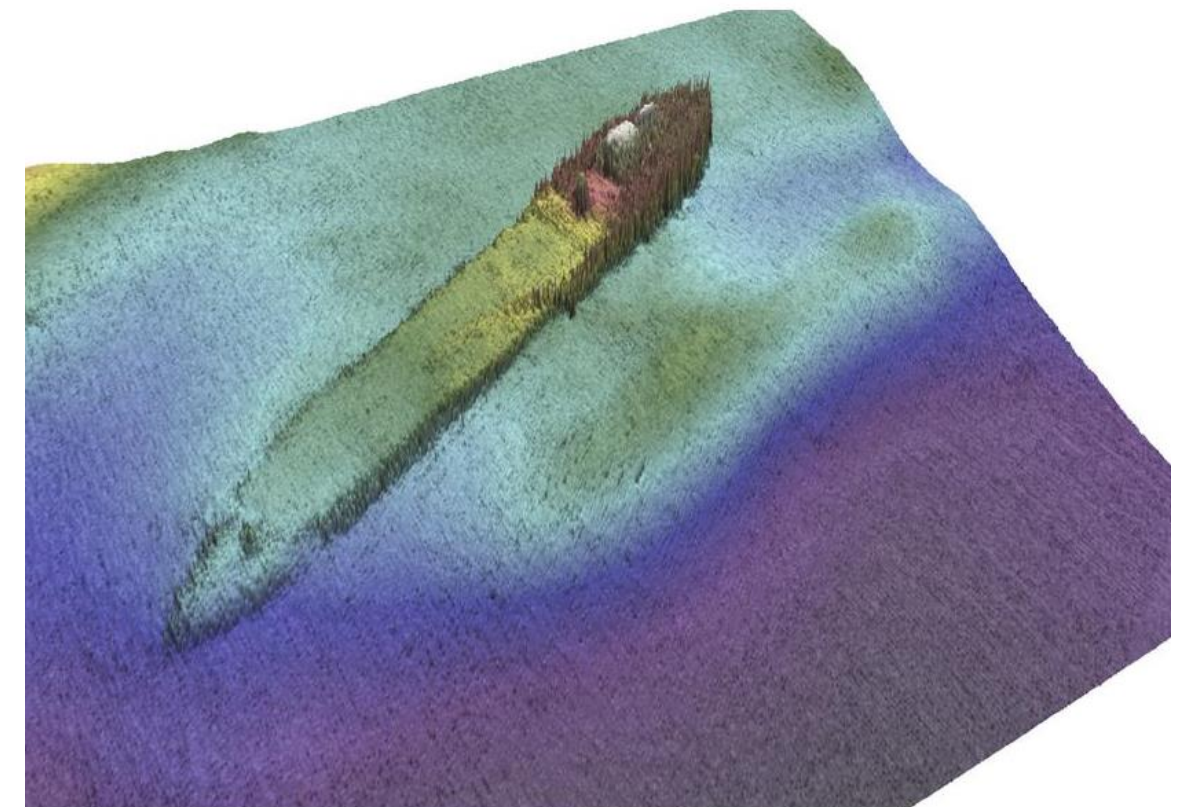
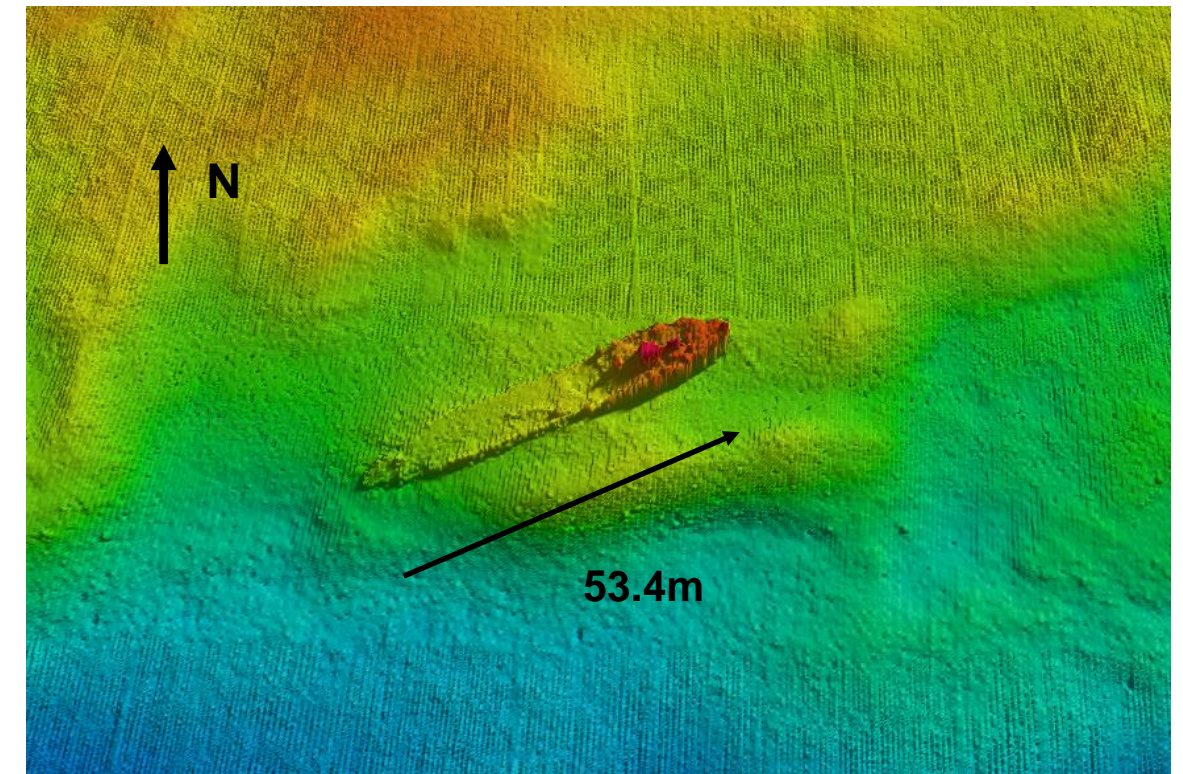
FURTHER READING/REFERENCES

www.infomar.ie

www.irishwrecksonline.net

<https://www.archaeology.ie/underwater-archaeology>

WRECK IMAGERY



Plan and 3D multibeam images of the *SS Premier* acquired during Infomar surveys CV09_01 and CV11_02