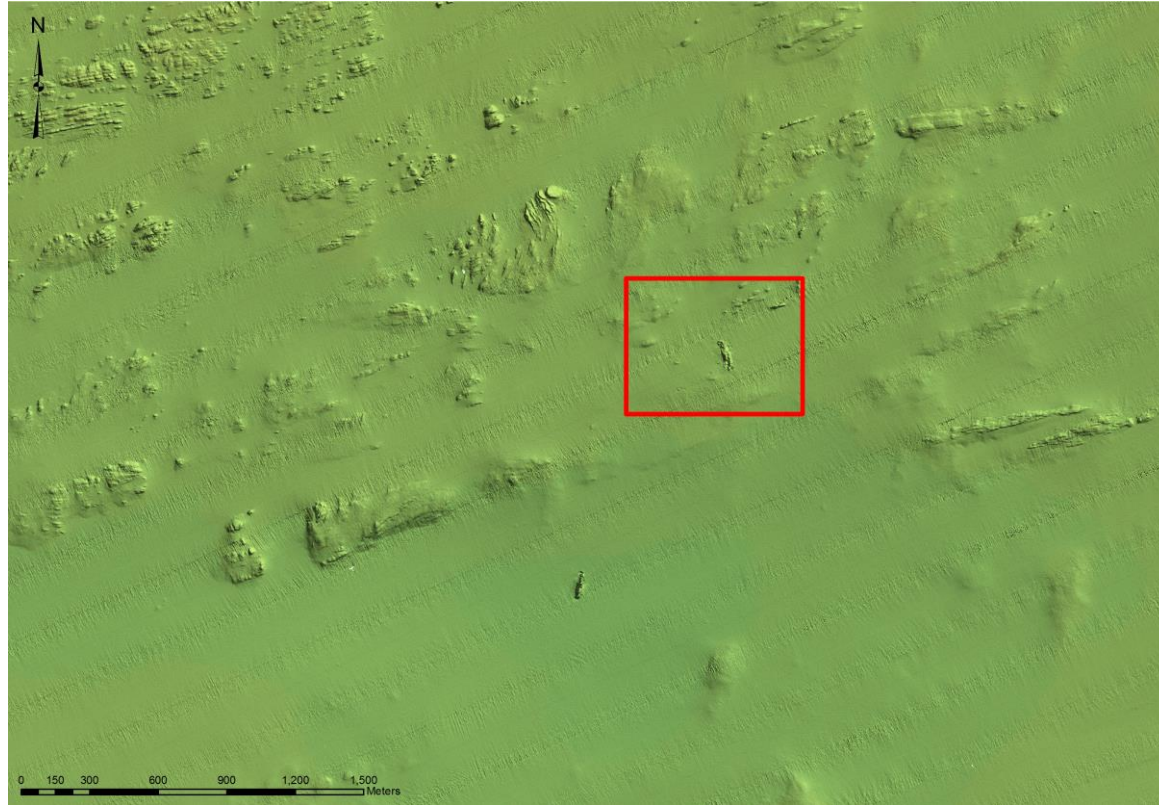
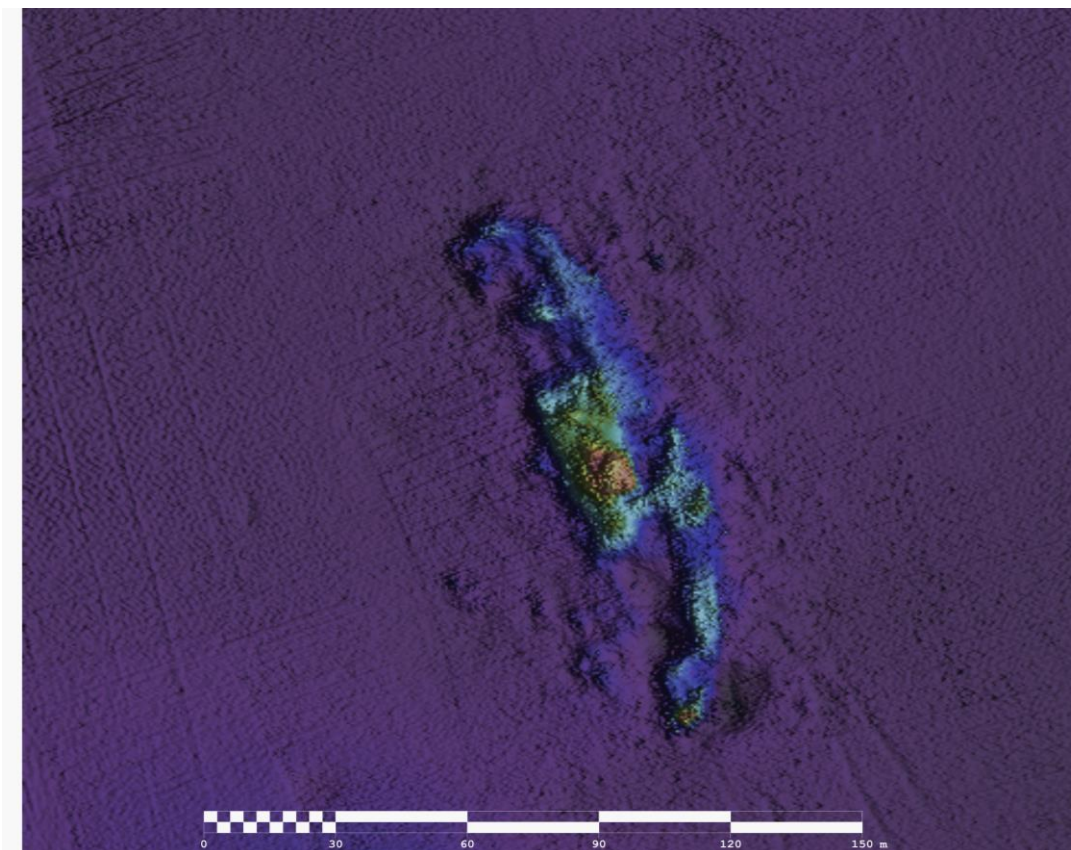


WRECK IMAGERY



Above the location of the SS *Pegu* from shaded relief imagery acquired during Infomar survey CV13_02 south priority area and below an image of the *Pegu* at 50cm resolution.



LOCATION

Location 14 km SE of Galley Head

Coordinates -08° 46' 41.38" W
51° 28' 24.87" N

Depth of Water 80.9 m

VESSEL INFORMATION

Vessel type Passenger/Cargo Vessel

Flag British

Vessel Dimensions 134.8 m (l), 16.8 m (b),
8.7 m (d)

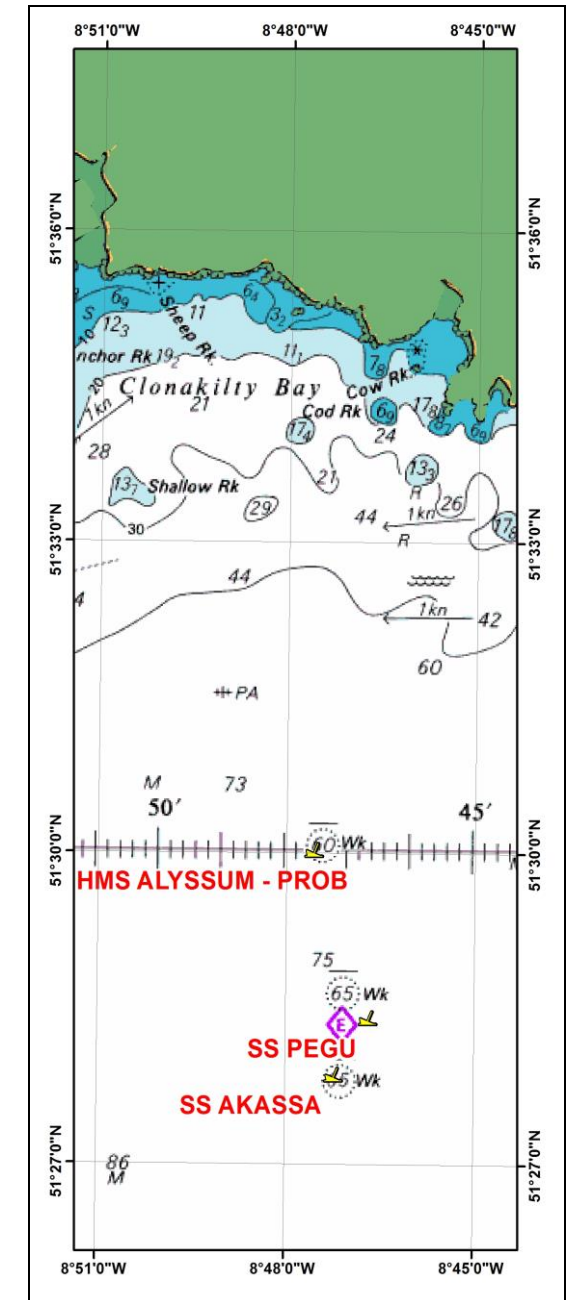
Date of building 1913

DETAILS OF SINKING

On July 8th, 1917 the SS *Pegu*, on a voyage from Rangoon to Liverpool with a cargo of beans, rice and general cargo, was sunk by the German submarine U-57 (Carl-Siegfried Ritter von Georg), 7 miles southeast of Galley Head. 1 person was lost.



SS PEGU



INFOMAR WRECK INFORMATION SHEET 33

VESSEL HISTORY

The SS *Pegu* was built by Wm. Denny & Bros., Dumbarton in 1913 and owned at the time of her loss by British & Burmese SN. Co. Ltd. & Burmah SS. Co. Ltd. (P. Henderson & Co.), Glasgow. The *Pegu* was a British steamer of 6348 tons.

DIVE INFORMATION

This wreck is approximately 585 m from the charted position. The wreck is partially broken down with several small pieces of debris visible on multibeam data around the main wreck area.

Wrecks over 100 years old and archaeological objects found underwater are protected under the National Monuments (Amendment) Acts 1987 and 1994. As the SS *Pegu* is over 100 years old, it is protected and a license is required to dive the site which can be obtained from:

<https://www.archaeology.ie/licences/dive-survey-licence>

ABOUT INFOMAR

Covering some 125,000 square kilometres of underwater territory, INFOMAR (the **IN**tegrated Mapping **FO**r the Sustainable Development of Ireland's **MAR**ine Resource) project will produce integrated mapping products covering the physical, chemical and biological features of the seabed. INFOMAR will initially focus on 26 priority bays and three priority areas around the coast delivering: hydrographic maps, illustrating everything from sandbars to underwater canyons and cliffs; seabed classification maps showing the type of sediment on the seabed. INFOMAR provides key baseline data to support coastal and inshore development. Making this information available to the world aims to stimulate research and development of Ireland's 220 million acres under the sea. The data will be of interest to fisheries managers, aquaculture operators, coastal zone managers and engineers, offshore engineering interests, licensing authorities and those carrying out environmental impact assessments. Indeed this unique dataset is of interest in its own right because of the sheer volume of data collected

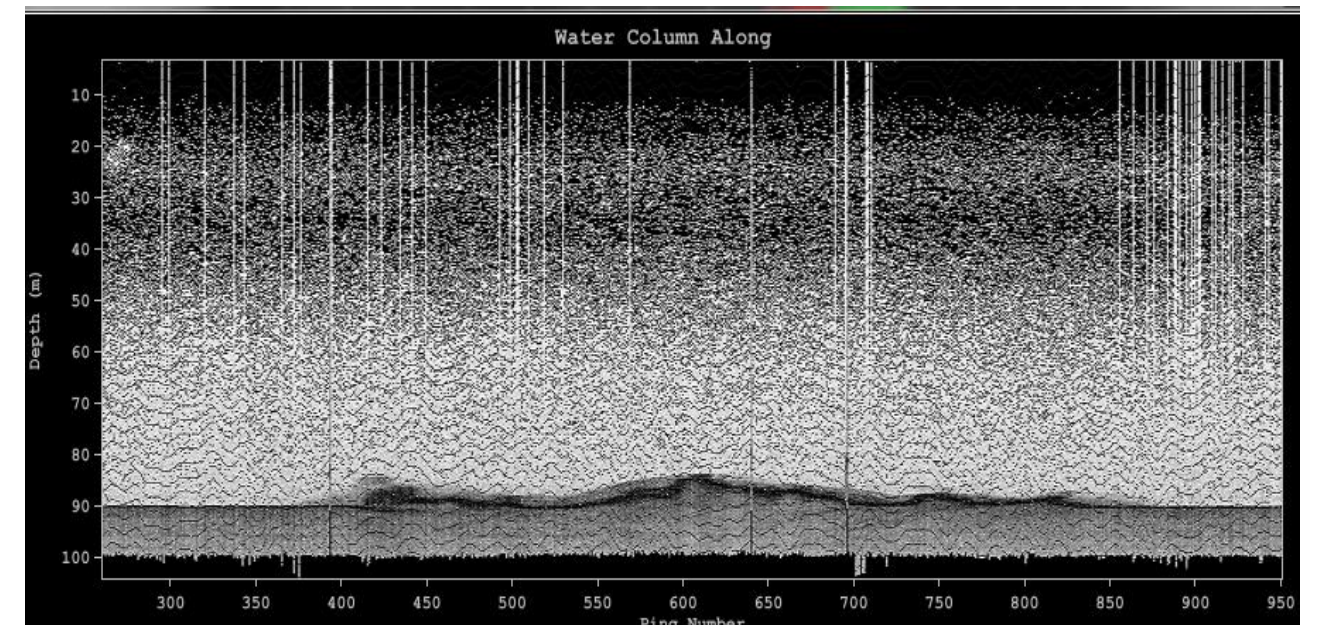
FURTHER READING/REFERENCES

www.infomar.ie

<https://www.archaeology.ie/underwater-archaeology>

www.irishwrecksonline.net

WRECK IMAGERY



Above an image of the water column data along track of the SS *Pegu* from Caris Hips and Sips software and below a 3D image of the SS *Pegu* captured using Fledermaus visualisation software.

