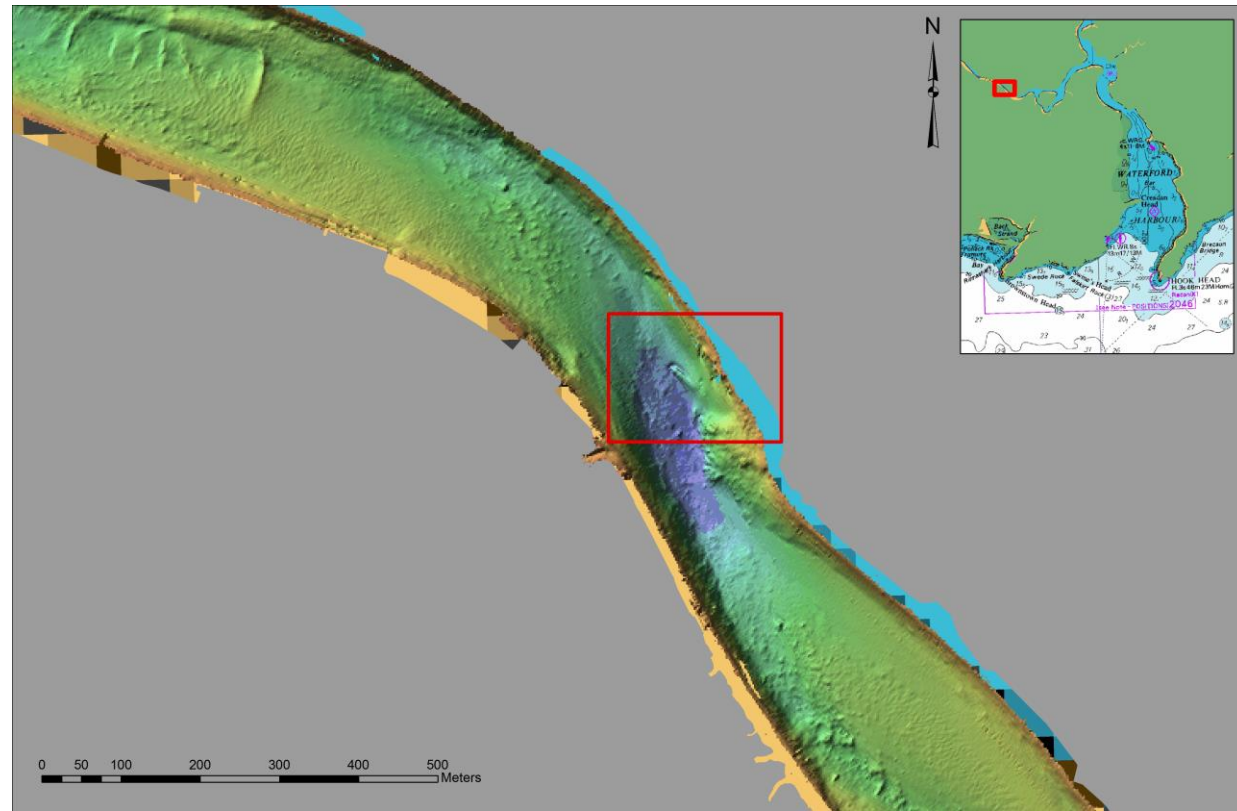
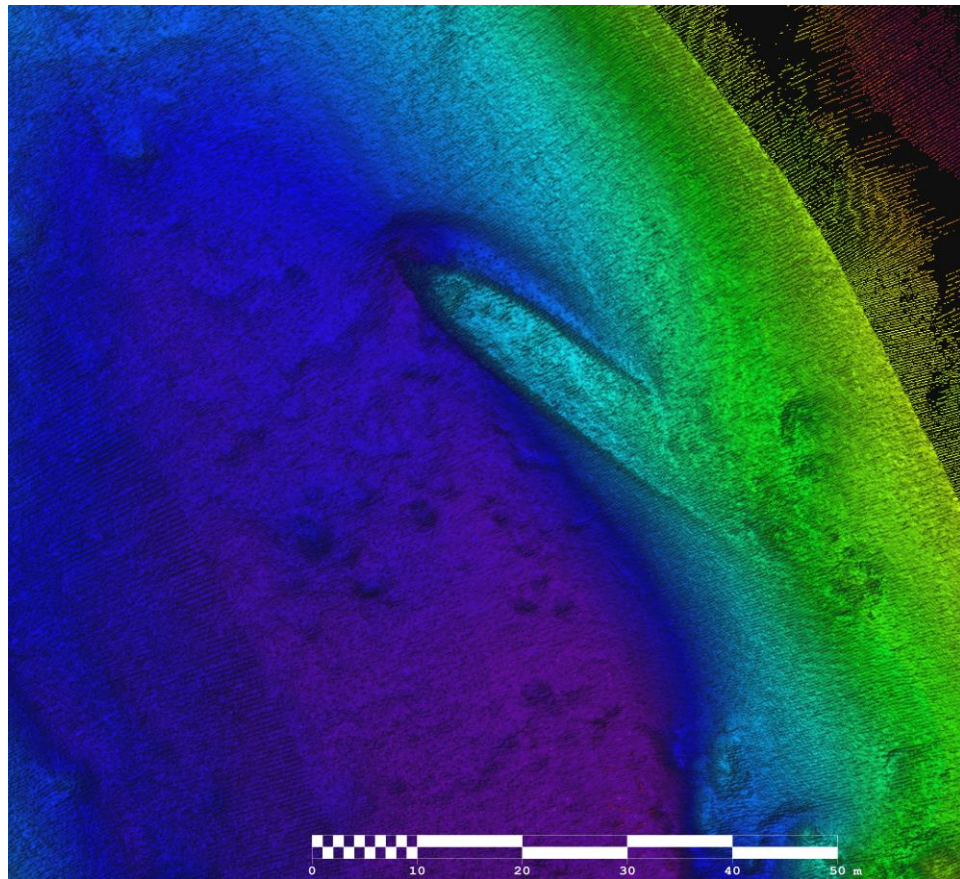


## WRECK IMAGERY



Above the location of the SS *Harvard* on the northern bank of the River Suir and below an image of the SS *Harvard* from the shaded relief acquired during the Infomar survey KRY11\_01, Waterford approaches.



## LOCATION

**Location** River Suir, Waterford City

**Coordinates** -07° 06' 01.02" W  
52° 15' 34.53" N

**Depth of Water** 12m

## VESSEL INFORMATION

**Vessel type** Steamship

**Flag** British

**Vessel Dimensions** 60 m (l), 7 m (b)

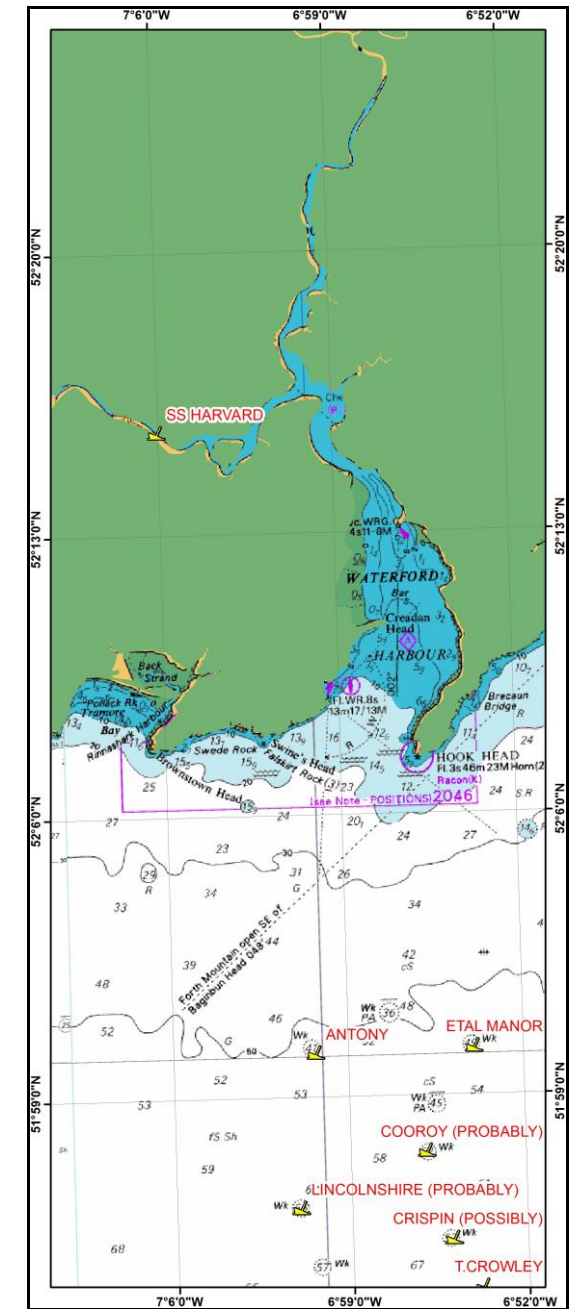
**Date of building**

## DETAILS OF SINKING

In 1870 while on route from Spain to Glasgow the SS *Harvard* struck rocks in Waterford Harbour. It was carrying a cargo of Copper ore which is thought to have been salvaged.



## SS HARVARD



INFOMAR WRECK  
INFORMATION SHEET 25

## **VESSEL HISTORY**

The *SS Harvard* was an iron steamer built in Glasgow in the 19<sup>th</sup> Century.

## **DIVE INFORMATION**

Wrecks over 100 years old and archaeological objects found underwater are protected under the National Monuments (Amendment) Acts 1987 and 1994. Significant wrecks less than 100 years old can be designated by Underwater Heritage Order (UHO) on account of their historical, archaeological or artistic importance

As the *SS Harvard* is over 100 years old, it is protected and a license is required to dive the site which can be obtained from:

<https://www.archaeology.ie/licences/dive-survey-licence>

## **ABOUT INFOMAR**

Covering some 125,000 square kilometres of underwater territory, INFOMAR (the **IN**tegrated Mapping **FO**r the Sustainable Development of Ireland's **MAR**ine Resource) project will produce integrated mapping products covering the physical, chemical and biological features of the seabed. INFOMAR will initially focus on 26 priority bays and three priority areas around the coast delivering: hydrographic maps, illustrating everything from sandbars to underwater canyons and cliffs; seabed classification maps showing the type of sediment on the seabed. INFOMAR provides key baseline data to support coastal and inshore development. Making this information available to the world aims to stimulate research and development of Ireland's 220 million acres under the sea. The data will be of interest to fisheries managers, aquaculture operators, coastal zone managers and engineers, offshore engineering interests, licensing authorities and those carrying out environmental impact assessments. Indeed this unique dataset is of interest in its own right because of the sheer volume of data collected

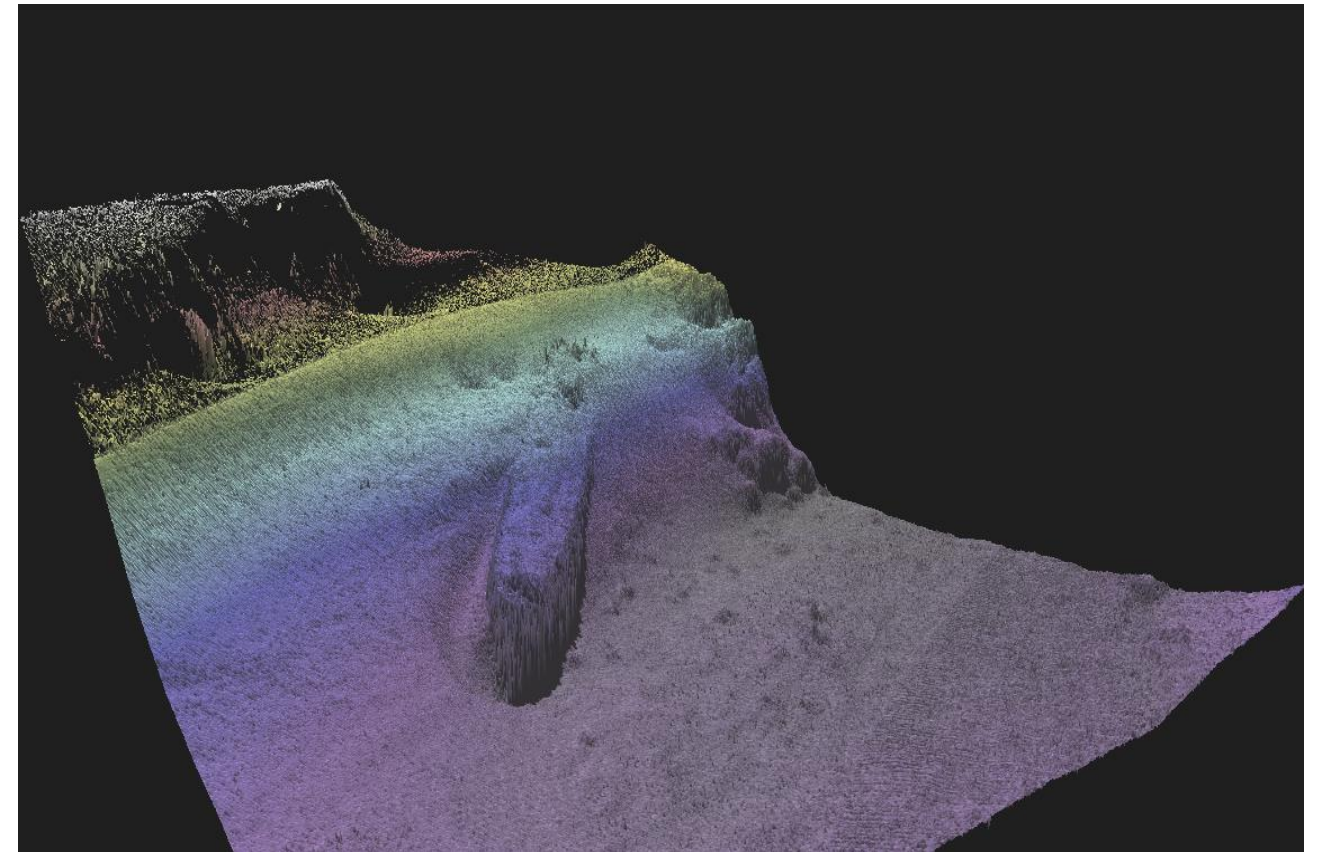
## **FURTHER READING/REFERENCES**

[www.infomar.ie](http://www.infomar.ie)

<https://www.archaeology.ie/underwater-archaeology>

[www.irishwrecksonline.net](http://www.irishwrecksonline.net)

## **WRECK IMAGERY**



Above is a 3D image of the *SS Harvard* lying NW-SE on the banks of the River Suir using Fledermaus 3D visualisation software.