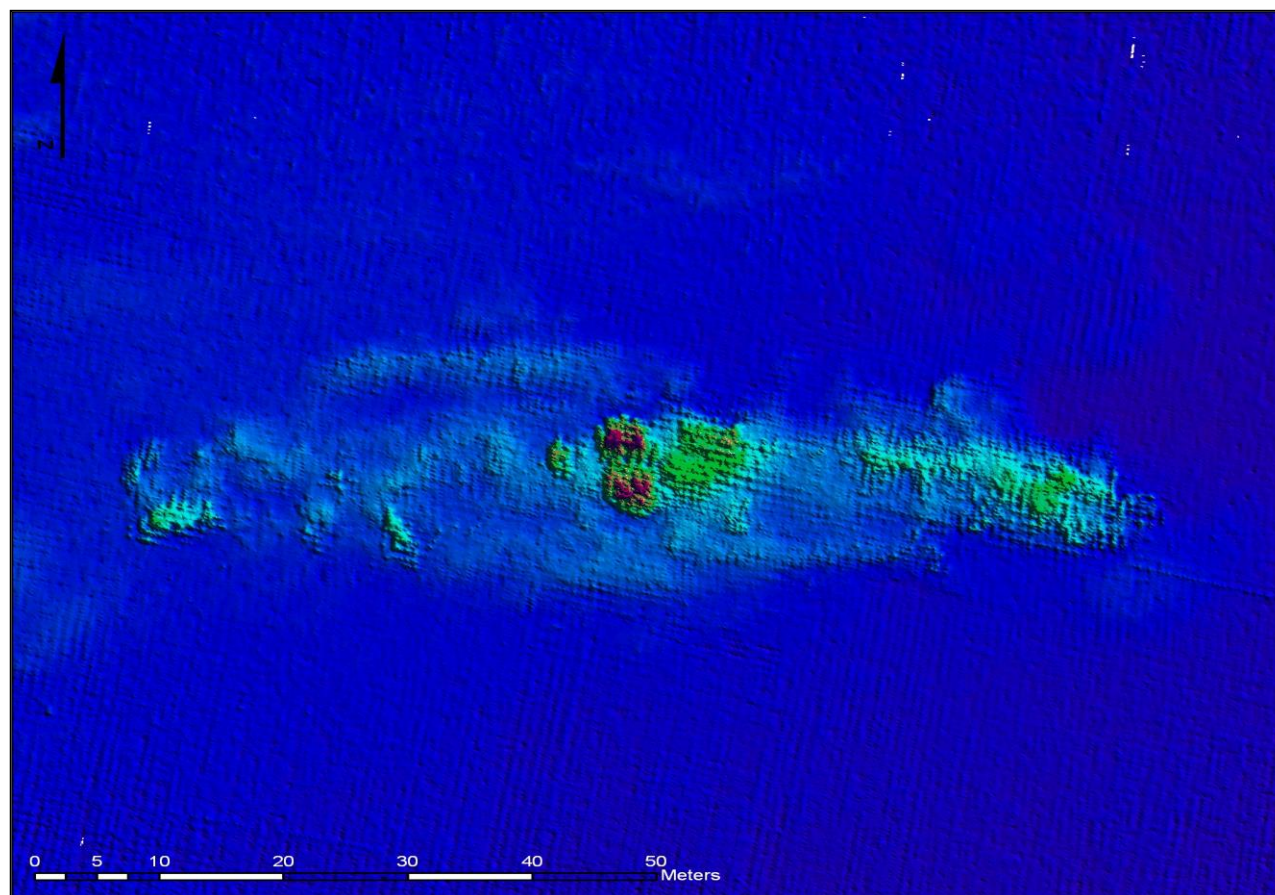
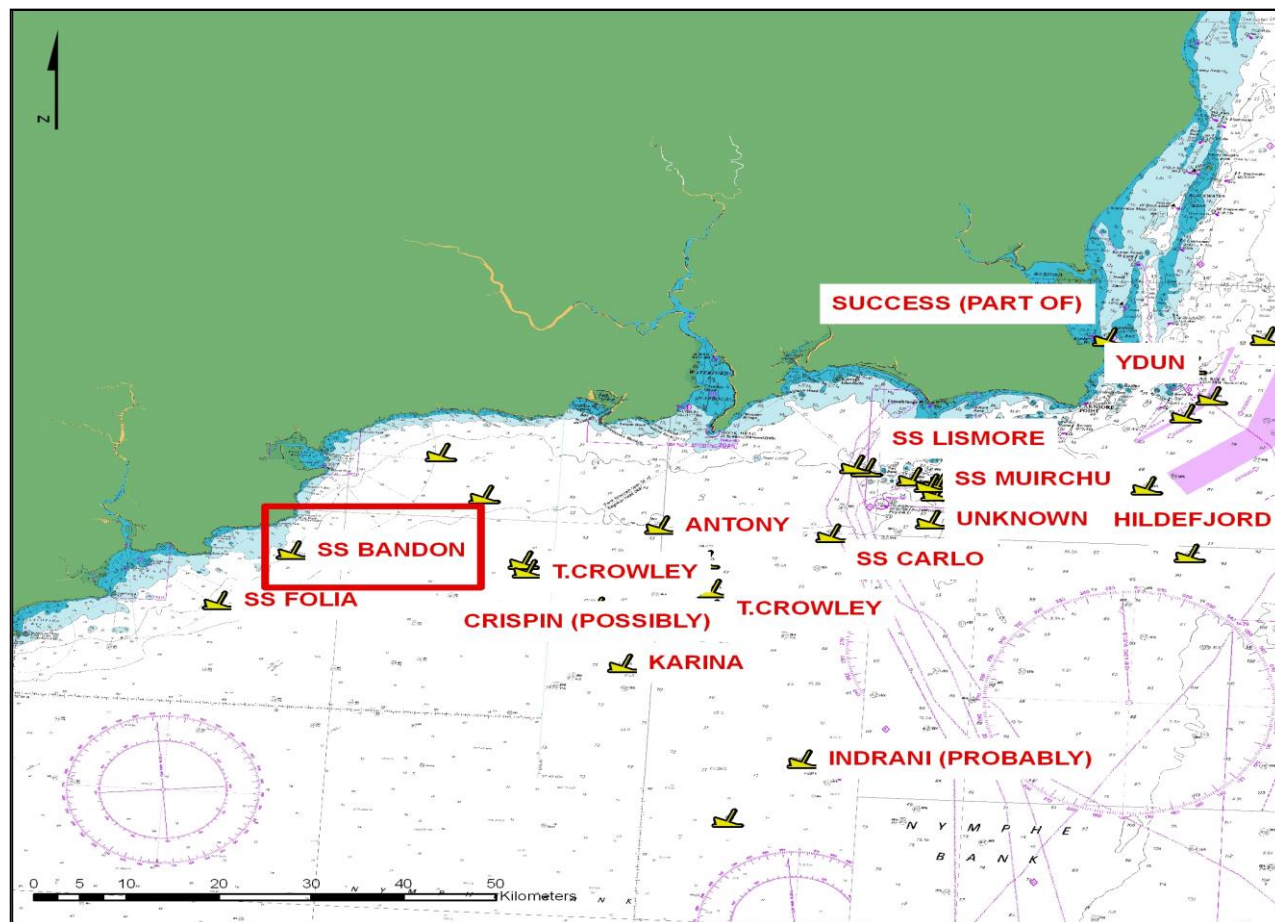


WRECK IMAGERY



Above the location of the SS *Bandon* off the south coast and below an image of the SS *Bandon* from the shaded relief acquired during the INFOMAR survey CV10_03, Southern priority area.

LOCATION

Location 5 km South of Mine Head

Coordinates -07° 34' 47.976" W
51° 56' 56.226" N

Depth of Water 33 m

VESSEL INFORMATION

Vessel type Cargo Vessel

Flag Irish

Vessel Dimensions 81.1 m (l),
11.3 m (b), 5.2 m (d)

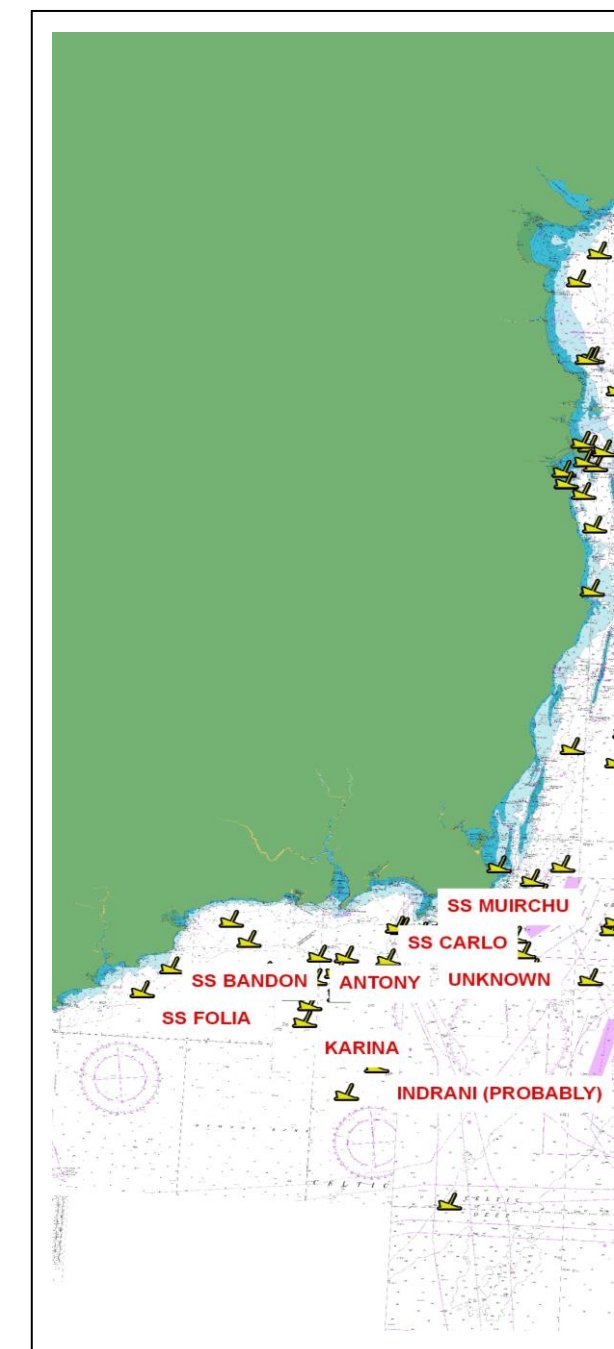
Date of building 1910

DETAILS OF SINKING

On Friday April 13th 1917 the SS *Bandon*, under the command of Captain P.F. Kelly, was on route from Liverpool to Cork when she was torpedoed by a mine from the German submarine UC-44 (Kurt Tebbenjohanns). She sank 2.5 miles SW of Mine Head with general cargo onboard. 28 members of the crew were killed. 4 survived including Captain Kelly.



SS BANDON



INFOMAR WRECK INFORMATION SHEET 14

VESSEL HISTORY

The SS *Bandon* was built in 1910 by Swan, Hunter & Wigham Richardson Ltd., Newcastle-Upon-Tyne. She was owned by the Cork Steam Packet Co. Ltd. and measured 81.07 x 11.32 x 5.28 metres and grossed 1,456 tons was powered by a 3 cylinder triple-expansion steam engine which generated 394 hp and was armed with 1 x 3 pounder stern gun.

DIVE INFORMATION

The SS *Bandon* lies in a general sea depth of 33 m and is orientated almost E-W, its bow orientated in an E-SE direction. The wreck is badly broken up. The SS *Bandon* should be dived at slack waters.

Wrecks over 100 years old and archaeological objects found underwater are protected under the National Monuments (Amendment) Acts 1987 and 1994. As the SS *Bandon* is over 100 years old, it is protected and a license is required to dive the site which can be obtained from:

<https://www.archaeology.ie/licences/dive-survey-licence>

ABOUT INFOMAR

Covering some 125,000 square kilometres of underwater territory, INFOMAR (the **IN**tegrated Mapping **FO**r the Sustainable Development of Ireland's **MAR**ine Resource) project will produce integrated mapping products covering the physical, chemical and biological features of the seabed. INFOMAR will initially focus on 26 priority bays and three priority areas around the coast delivering: hydrographic maps, illustrating everything from sandbars to underwater canyons and cliffs; seabed classification maps showing the type of sediment on the seabed. INFOMAR provides key baseline data to support coastal and inshore development. Making this information available to the world aims to stimulate research and development of Ireland's 220 million acres under the sea. The data will be of interest to fisheries managers, aquaculture operators, coastal zone managers and engineers, offshore engineering interests, licensing authorities and those carrying out environmental impact assessments. Indeed this unique dataset is of interest in its own right because of the sheer volume of data collected

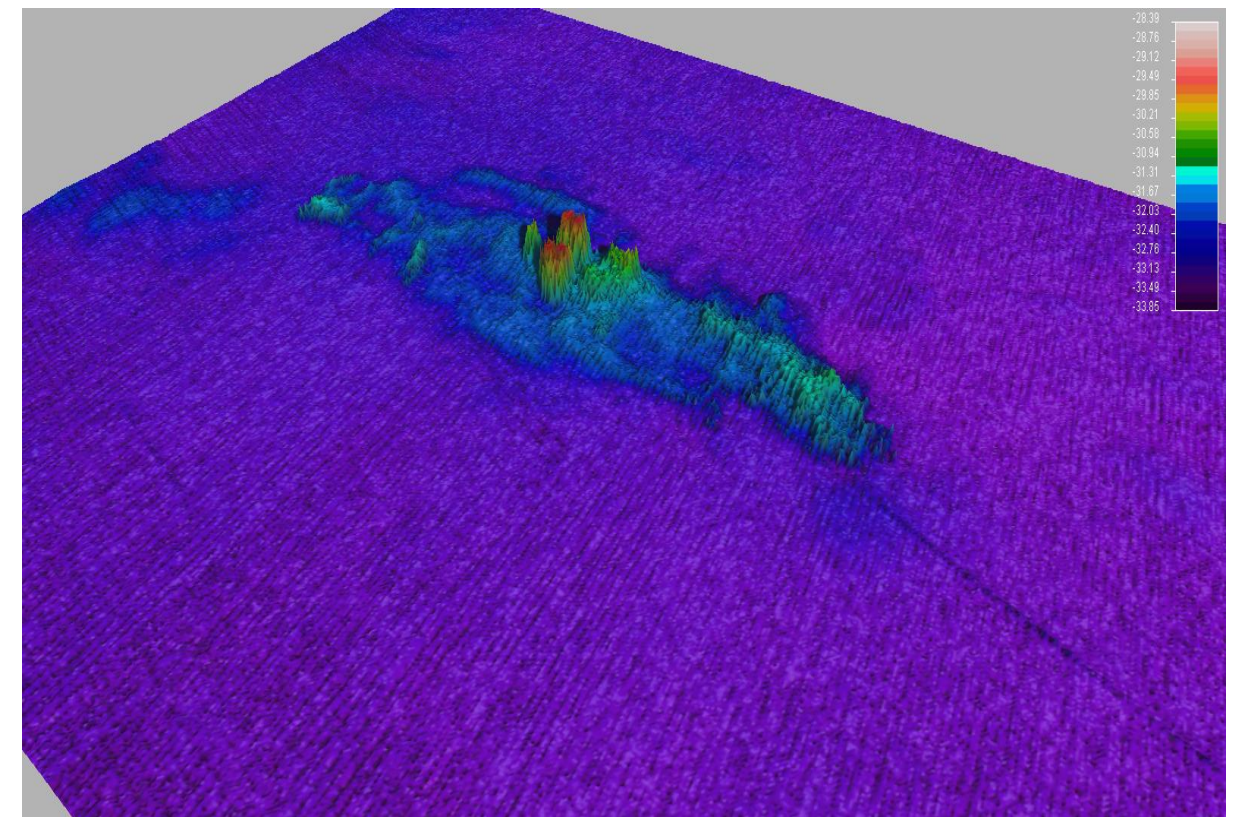
FURTHER READING/REFERENCES

www.infomar.ie

www.irishwrecksonline.net

<https://www.archaeology.ie/underwater-archaeology>

WRECK IMAGERY



Above a 3D image of the SS *Bandon* using Fledermaus 3D visualisation software and below a postcard of the SS *Bandon* in 1916 (Journal of the Cork Historical and Archaeological Society)

