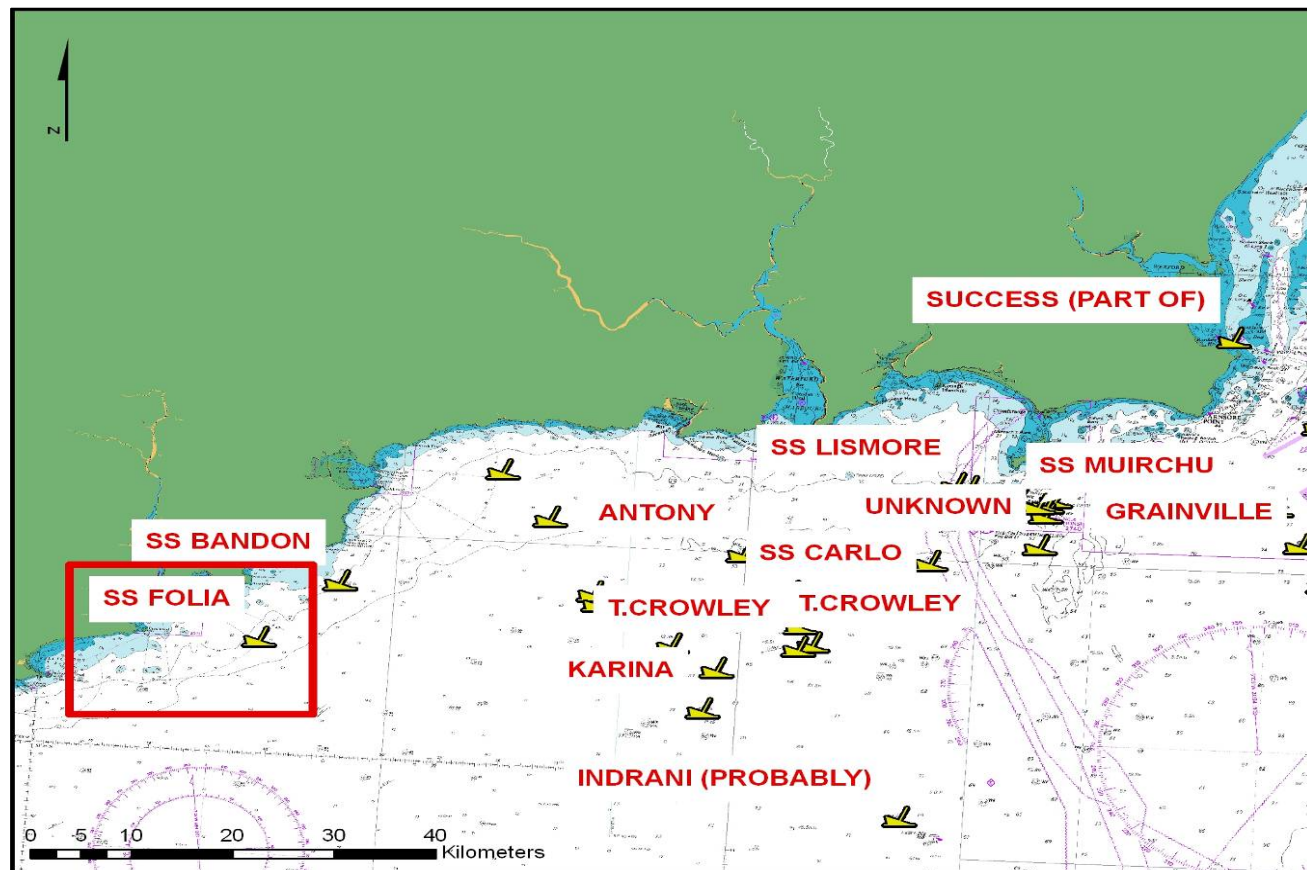
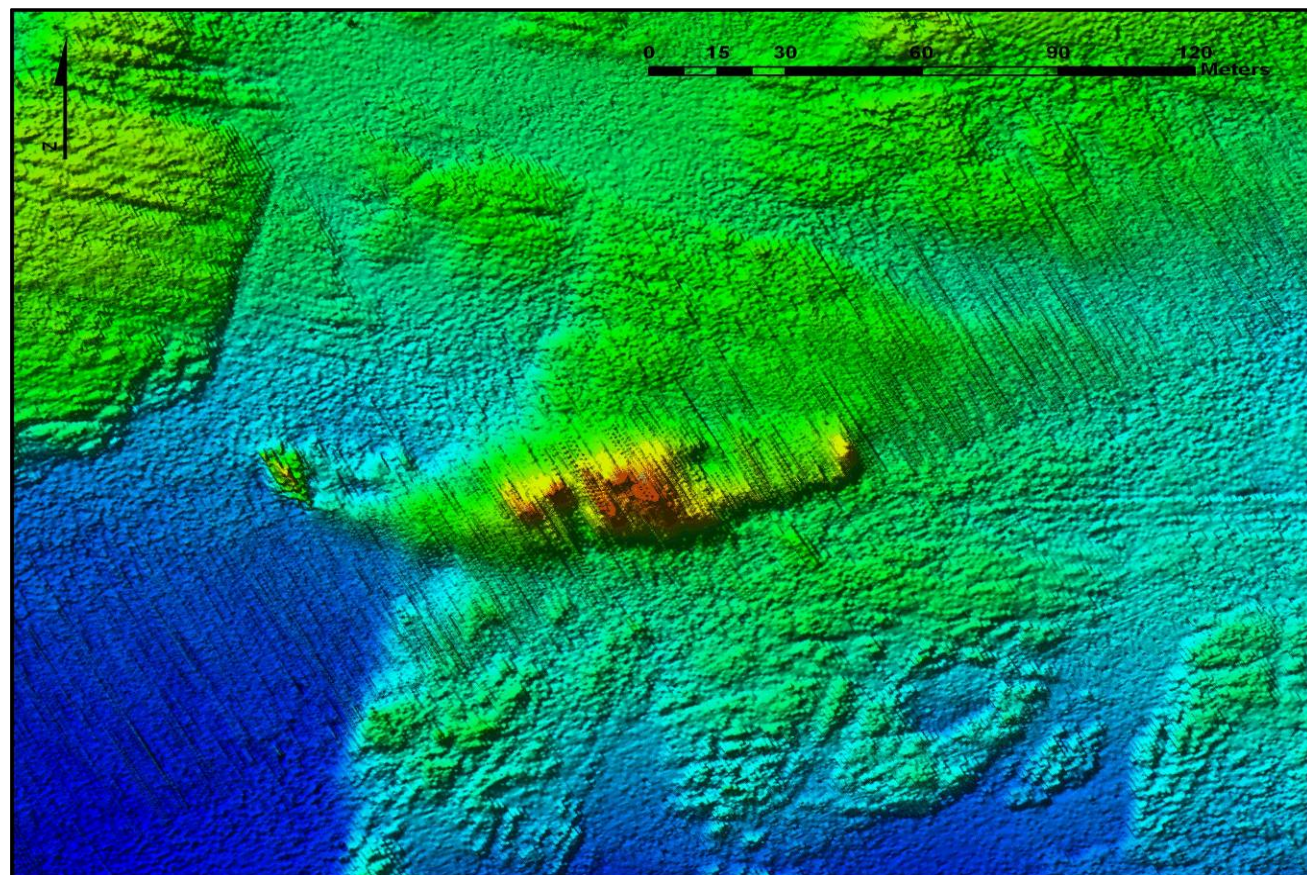


WRECK IMAGERY



Above the location of the SS *Folia* off the south coast and below an image of the SS *Folia* from the shaded relief acquired during the INFOMAR survey CV10_02, Southern priority area.



LOCATION

Location 7km South of Ram Head

Coordinates -07° 41' 20.77" W
51° 52' 51.82" N

Depth of Water 33 m

VESSEL INFORMATION

Vessel type Ocean Liner

Flag British

Vessel Dimensions 132 m (l),
16 m (b), 7.6 m (d)

Date of building 1907

DETAILS OF SINKING

On Sunday, March 11th 1917, the SS *Folia*, commanded by Captain F. Inch, was sunk off the Irish coast, while on a voyage from New York to Bristol. The SS *Folia* was torpedoed by German submarine U-53 which surfaced and sunk the vessel by gunfire. 7 of the crew were lost, 68 survived.



SS FOLIA



VESSEL HISTORY

The SS *Folia* originally named *Principe Di Piemonte* was built in 1907 by Sir J Laing & Sons Ltd of Sunderland for Lloyd Sabaudo Line of Italy. She was a four masted twin funnel ocean liner. The company ordered three ships from Laing's of Sunderland for the North Atlantic New York service. These were named *Re d'Italia*, *Regina d'Italia* and *Principa di Piemonte*. The three sister ships were identical in every way with their two masts and two funnels except the *Principe* had a slightly larger tonnage. In 1913 she was purchased by Uranium S.S. Co. and renamed *Principello* where she sailed between Rotterdam and New York. In 1914 the *Principello* was sold to Canadian Northern's Royal Line and serviced the Bristol Channel service, Canada to Avonmouth. In 1916 she was acquired by Cunard Co. and renamed the SS *Folia*. From 1916 until her sinking in 1917 the SS *Folia* was used for shipping cargo only between Liverpool and New York.

DIVE INFORMATION

The SS *Folia* lies in a general sea depth of 33 m and is orientated almost E-W and is badly broken up. A few high points remain including the bow area, the boilers and the stern area consisting of the rudder and small anti-aircraft gun.

Wrecks over 100 years old and archaeological objects found underwater are protected under the National Monuments (Amendment) Acts 1987 and 1994. As the SS *Folia* is over 100 years old, it is protected and a license is required to dive the site which can be obtained from:

www.archaeology.ie/servlet/apply_licence.jsp

Under the legislation all diving on protected wreck sites or with the intention of searching for archaeological underwater material is subject to such licensing requirements.

ABOUT INFOMAR

Covering some 125,000 square kilometres of underwater territory, INFOMAR (the **IN**tegrated Mapping **FO**r the Sustainable Development of Ireland's **MAR**ine Resource) project will produce integrated mapping products covering the physical, chemical and biological features of the seabed. INFOMAR will initially focus on 26 priority bays and three priority areas around the coast delivering: hydrographic maps, illustrating everything from sandbars to underwater canyons and cliffs; seabed classification maps showing the type of sediment on the seabed. INFOMAR provides key baseline data to support coastal and inshore development. Making this information available to the world aims to stimulate research and development of Ireland's 220 million acres under the sea. The data will be of interest to fisheries managers, aquaculture operators, coastal zone managers and engineers, offshore engineering interests, licensing authorities and those carrying out environmental impact assessments. Indeed this unique dataset is of interest in its own right because of the sheer volume of data collected

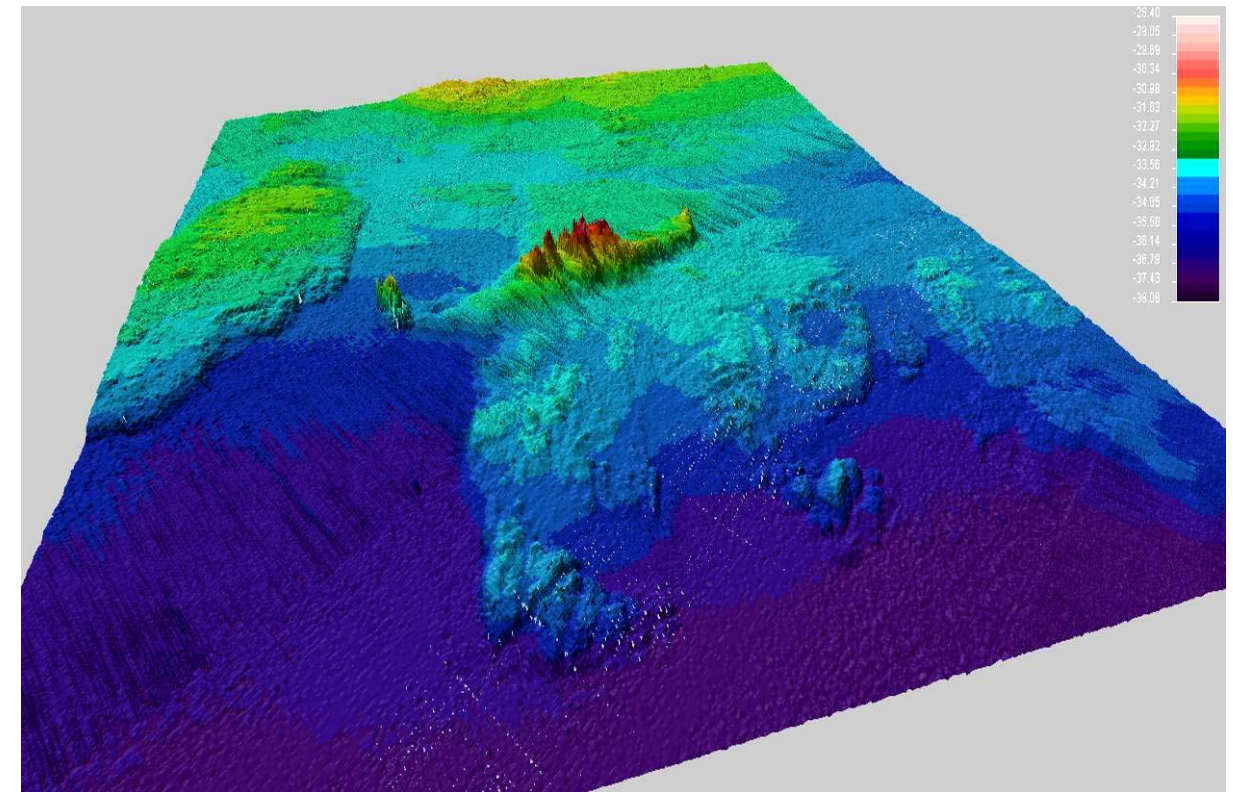
FURTHER READING/REFERENCES

www.infomar.ie

www.irishwrecksonline.net

<http://www.archaeology.ie/en/Shipwreck/Database/>

WRECK IMAGERY



Above a 3D image of the SS *Folia* using Fledermaus 3D visualisation software and below a collection of historical postcards of the SS *Folia* (Courtesy of Ian Lawler)

