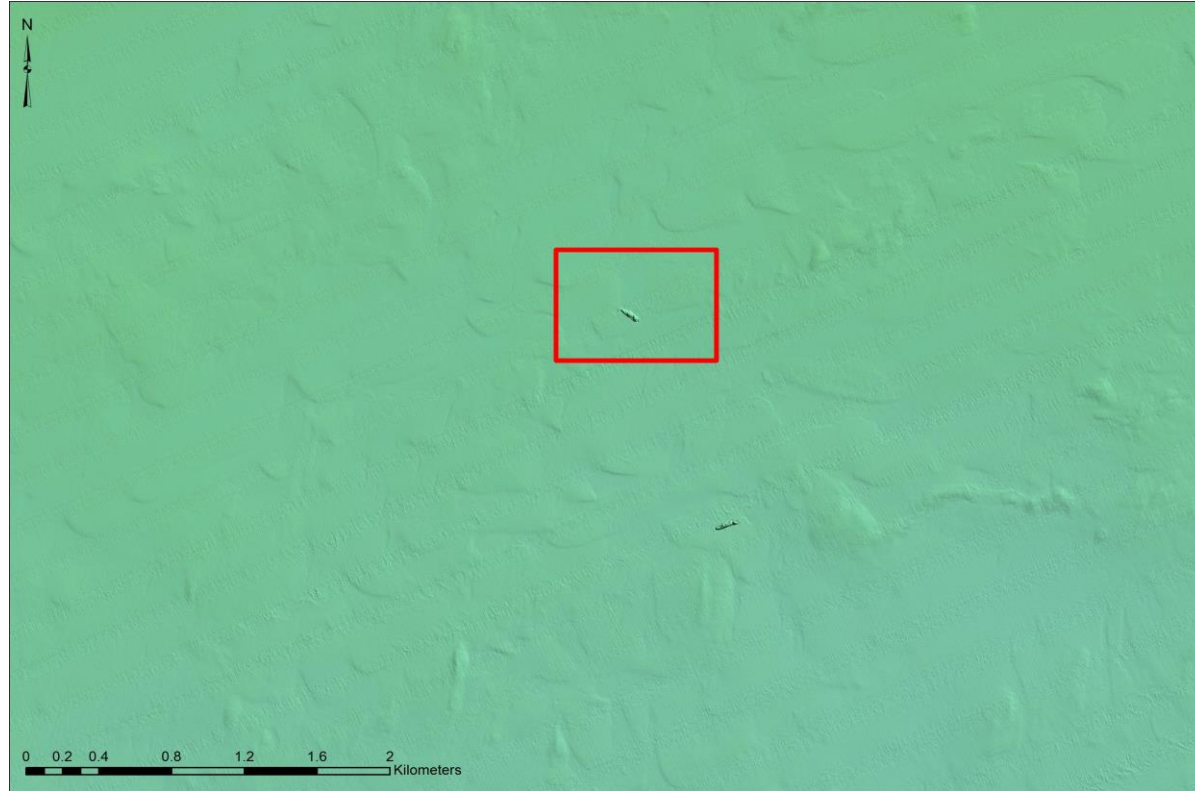
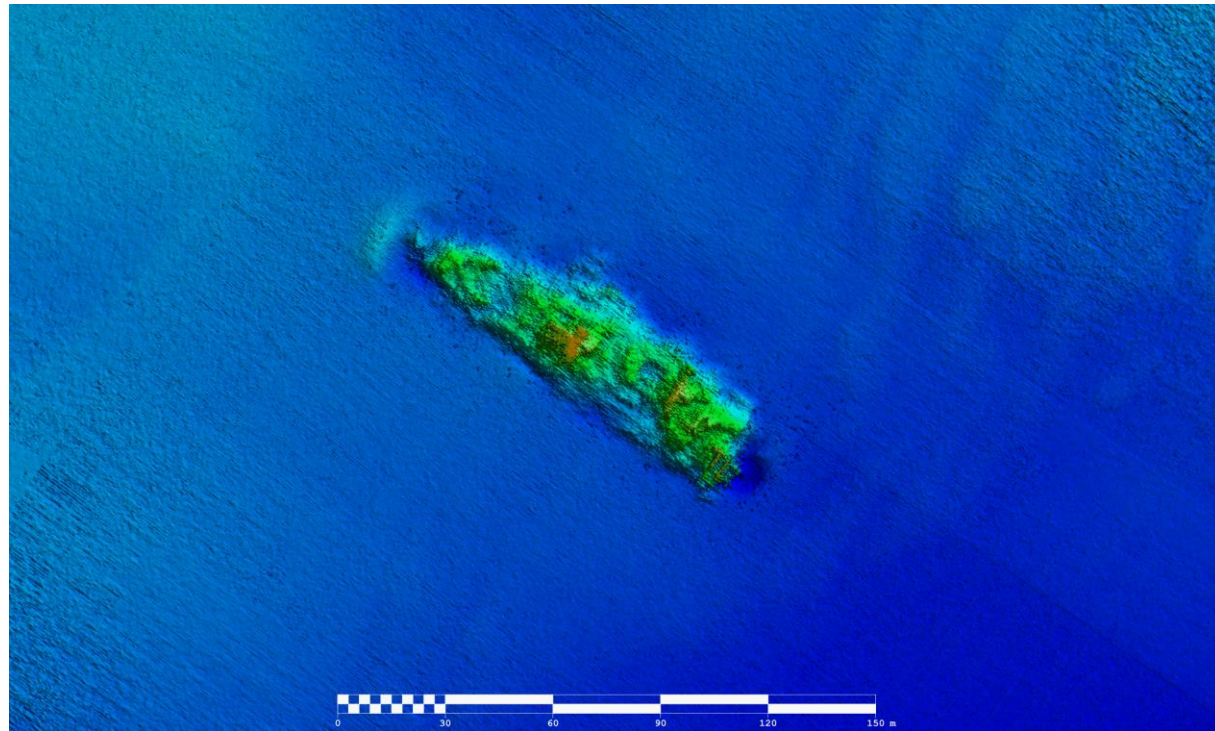


## WRECK IMAGERY



Above the location of the *SS Manchester Engineer* from shaded relief imagery acquired during Infomar survey CV13\_01 south priority area and below an image of the *SS Manchester Engineer* at 25cm resolution.



## LOCATION

**Location** 20.5 km S of Tramore Bay

**Coordinates** -07° 12' 55.50" W  
51° 57' 00.37" N

**Depth of Water** 56 m

## VESSEL INFORMATION

**Vessel type** Cargo Vessel

**Flag** British

**Vessel Dimensions** 110 m (l), 15 m (b),  
6 m (d)

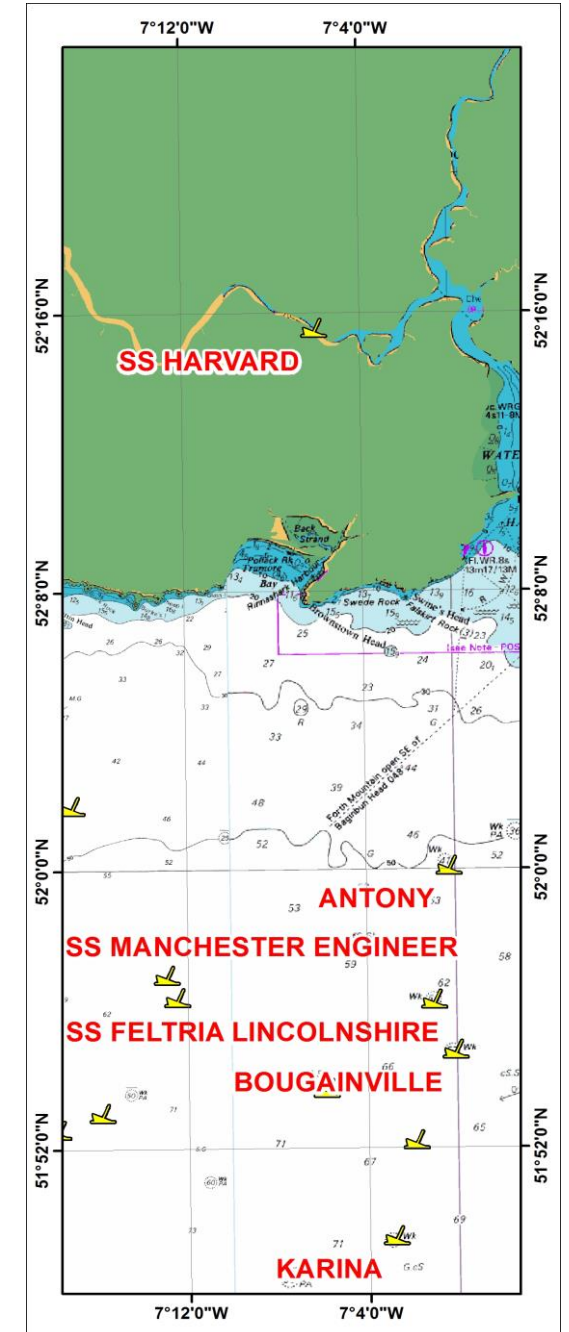
**Date of building** 1902

## DETAILS OF SINKING

On March 27<sup>th</sup> 1916, while on route from Philadelphia to Manchester the *SS Manchester Engineer* was torpedoed by the German submarine U-44 (Paul Wagenführ), 20 miles SW of the Coningbeg lightvessel. There were no casualties.



## SS MANCHESTER ENGINEER



## INFOMAR WRECK INFORMATION SHEET 37

## VESSEL HISTORY

The *SS Manchester Engineer* was built by Northumberland Shipbuilding Co. Ltd., Newcastle in 1902 and owned at the time of her loss by Manchester Liners, Ltd., Manchester. The *SS Manchester Engineer* was a British cargo vessel of steam propulsion with a weight of 4302 tons.

## DIVE INFORMATION

The wreck of the *SS Manchester Engineer* measures approximately 110m in length. The vessel is orientated NW-SE on the seafloor and is in a general depth of 61m.

Wrecks over 100 years old and archaeological objects found underwater are protected under the National Monuments (Amendment) Acts 1987 and 1994. As the *SS Manchester Engineer* is over 100 years old, it is protected and a license is required to dive the site which can be obtained from:

<https://www.archaeology.ie/licences/dive-survey-licence>

## ABOUT INFOMAR

Covering some 125,000 square kilometres of underwater territory, INFOMAR (the **IN**tegrated Mapping **FO**r the Sustainable Development of Ireland's **MAR**ine Resource) project will produce integrated mapping products covering the physical, chemical and biological features of the seabed. INFOMAR will initially focus on 26 priority bays and three priority areas around the coast delivering: hydrographic maps, illustrating everything from sandbars to underwater canyons and cliffs; seabed classification maps showing the type of sediment on the seabed. INFOMAR provides key baseline data to support coastal and inshore development. Making this information available to the world aims to stimulate research and development of Ireland's 220 million acres under the sea. The data will be of interest to fisheries managers, aquaculture operators, coastal zone managers and engineers, offshore engineering interests, licensing authorities and those carrying out environmental impact assessments. Indeed this unique dataset is of interest in its own right because of the sheer volume of data collected

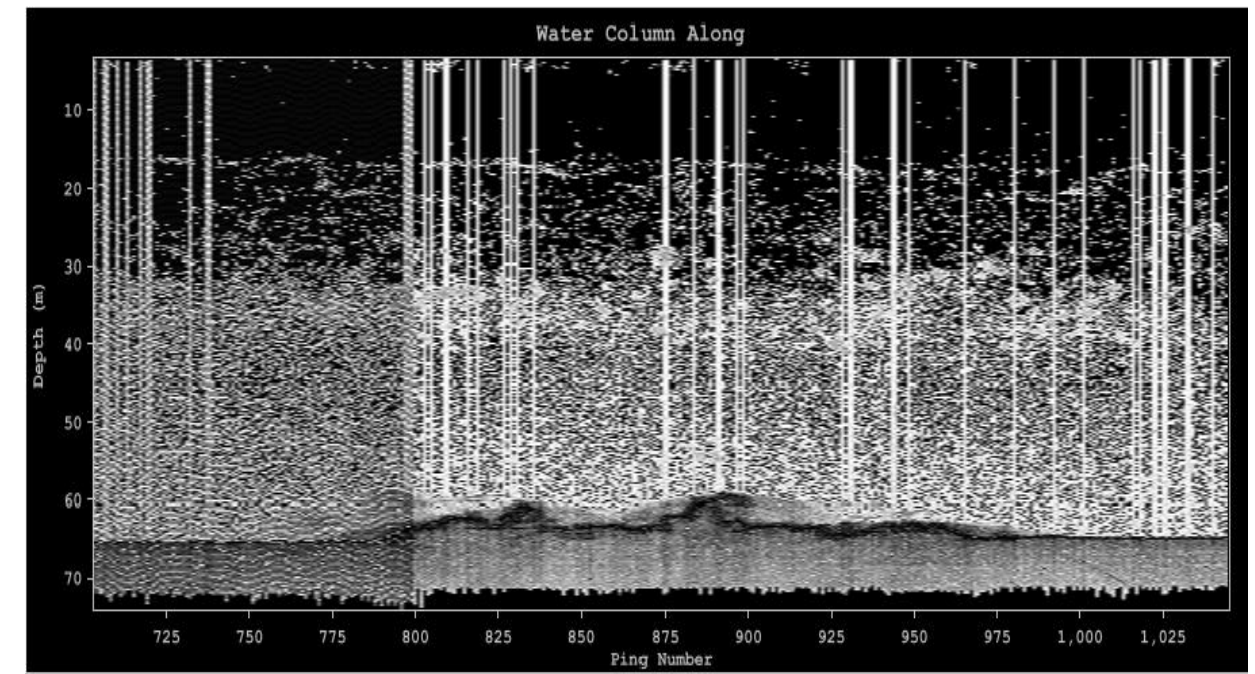
## FURTHER READING/REFERENCES

[www.infomar.ie](http://www.infomar.ie)

<https://www.archaeology.ie/underwater-archaeology>

[www.irishwrecksonline.net](http://www.irishwrecksonline.net)

## WRECK IMAGERY



Above an image of the water column data along track of the *SS Manchester Engineer* from Caris Hips and Sips software and below a 3D image of the *SS Manchester Engineer* captured using Fledermaus visualisation software.

