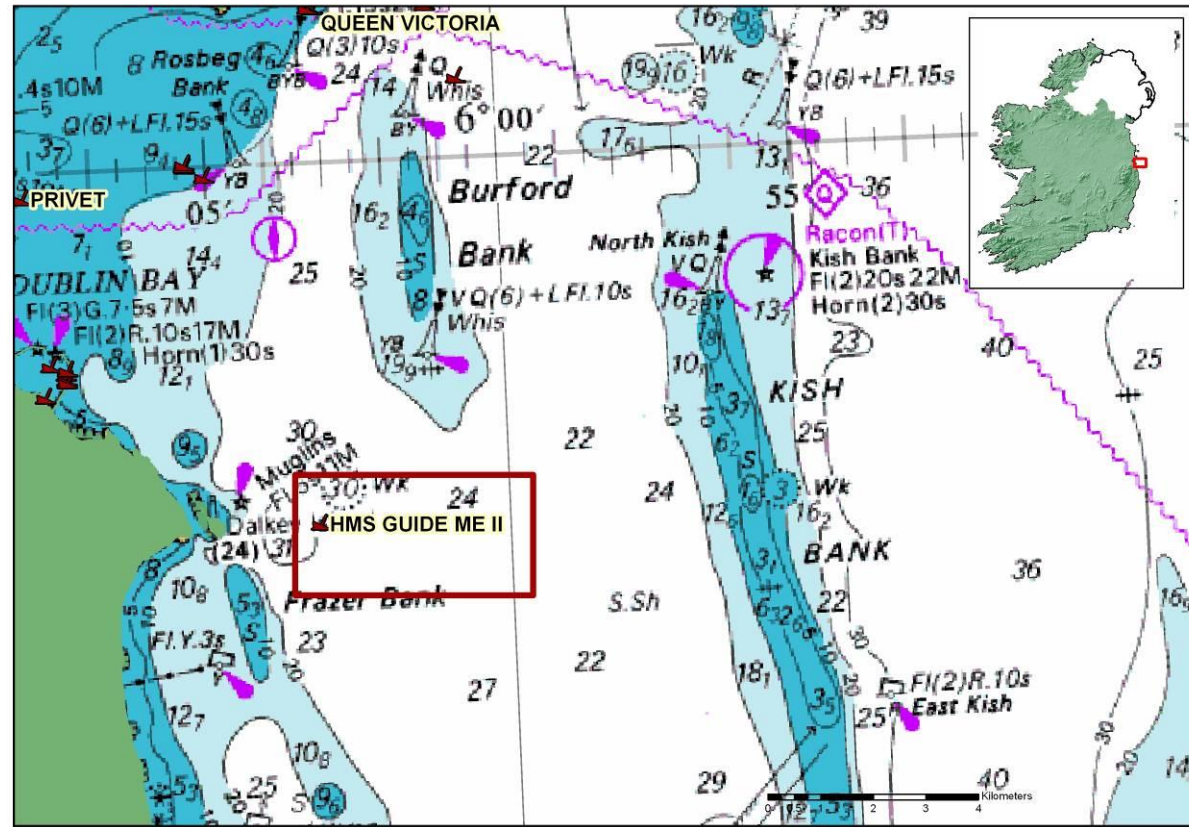
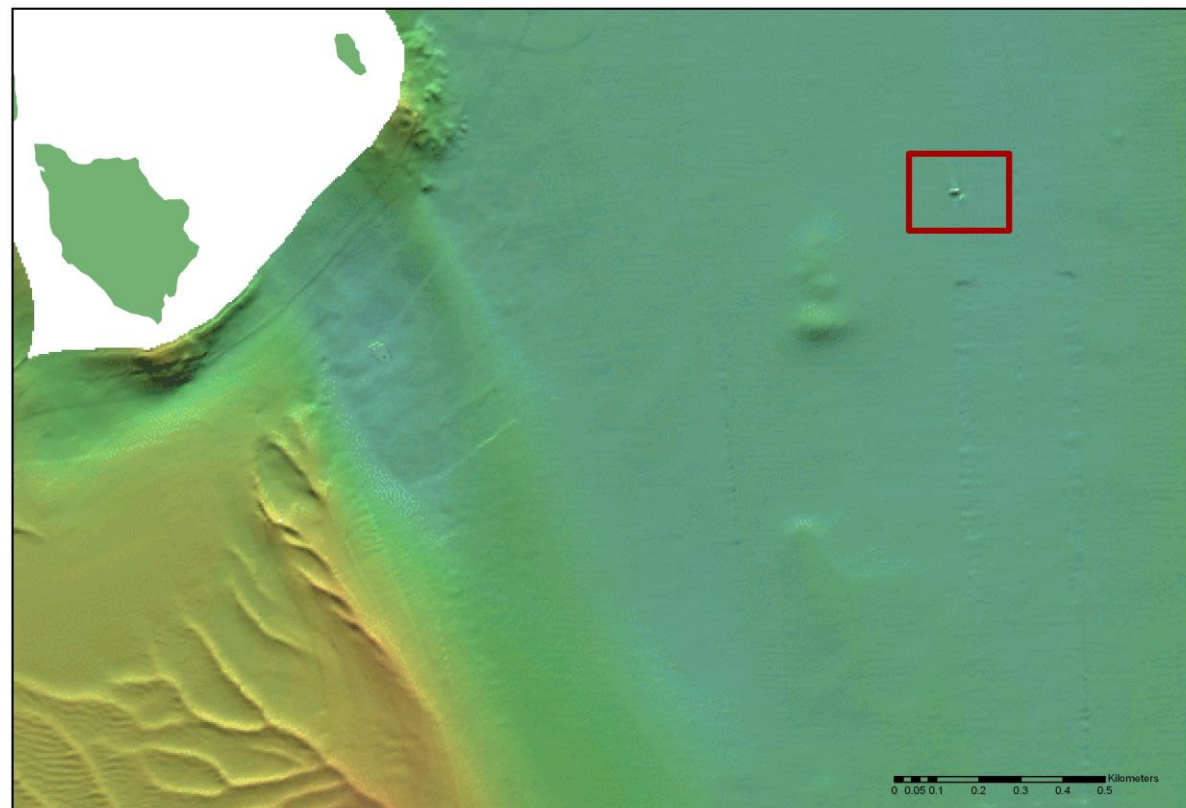


WRECK IMAGERY



Below is the location of the Guide Me II and the shaded relief of Dublin Bay (10m x 10m)



LOCATION

Location 5.5km ESE of Dun Laoghaire

Coordinates -6° 3' 15.88" W
53° 16' 19.52" N

Depth of Water 33 m

VESSEL INFORMATION

Vessel type Hired drifter/Anti-submarine coastal gun

Flag British

Vessel Dimensions 26.2 m (l),
5.5 m (b), 27 m (d)

Date of building 1907

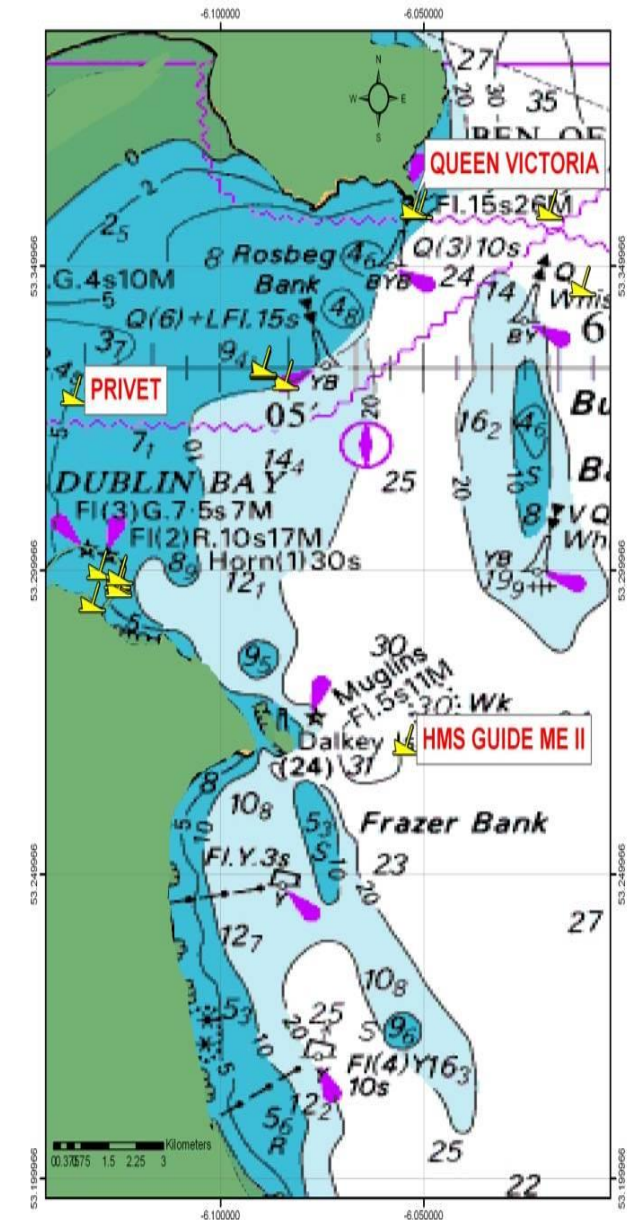
DETAILS OF SINKING

Date of loss 29/8/1918

Circumstances of loss
Sank following a collision off the Mughlins.



HMS GUIDE ME II



VESSEL HISTORY

The *Guide Me II* was built in Aberdeen in 1907 as a Peterhead F.V. Drifter (i.e. a drift-net fishing boat) by Hall, Russell & Co. She grossed 100 tons and was approximately 26m long and 5.6m wide. In March 1915, she was hired by the Admiralty in and converted into an anti-submarine coastal gunboat, with the addition of a six-pound gun. She sank while on patrol after collision with, depending on reports, either an unnamed vessel, or the nearby Muglins rock. The site of impact is clearly visible as a large hole on the starboard side. The *Guide Me II* was rediscovered in 1990 by Ivan Tunsted. He also raised the gun, which is now in the Maritime Museum in Dun Laoghaire.

DIVE INFORMATION

The *Guide Me II* is located 1.5 miles SE of the Muglins and is orientated in a SE-NW direction. The vessel lies upright and is virtually intact. The wheelhouse is demolished and there is a large gash amidships on the starboard side. Plenty of fish and congers under the keel. Best dived 1 hour before High Water/Low Water.

Wrecks over 100 years old and archaeological objects found underwater are protected under the National Monuments (Amendment) Acts 1987 and 1994. Significant wrecks less than 100 years old can be designated by Underwater Heritage Order (UHO) on account of their historical, archaeological or artistic importance

Further information can be obtained from::

<https://www.archaeology.ie/licences/dive-survey-licence>

ABOUT INFOMAR

Covering some 125,000 square kilometres of underwater territory, INFOMAR (the **IN**tegrated Mapping **FO**r the Sustainable Development of Ireland's **MAR**ine Resource) project will produce integrated mapping products covering the physical, chemical and biological features of the seabed. INFOMAR will initially focus on 26 priority bays and three priority areas around the coast delivering: hydrographic maps, illustrating everything from sandbars to underwater canyons and cliffs; seabed classification maps showing the type of sediment on the seabed. INFOMAR provides key baseline data to support coastal and inshore development. Making this information available to the world aims to stimulate research and development of Ireland's 220 million acres under the sea. The data will be of interest to fisheries managers, aquaculture operators, coastal zone managers and engineers, offshore engineering interests, licensing authorities and those carrying out environmental impact assessments. Indeed this unique dataset is of interest in its own right because of the sheer volume of data collected

FURTHER READING/REFERENCES

Bourke, E.J. 1994–2000 Shipwrecks of the Irish coast (3 vols). Dublin.

Brady, K. (comp.) 2008 Shipwreck Inventory of Ireland: Louth, Meath, Dublin and Wicklow. Dublin. The Stationery Office.

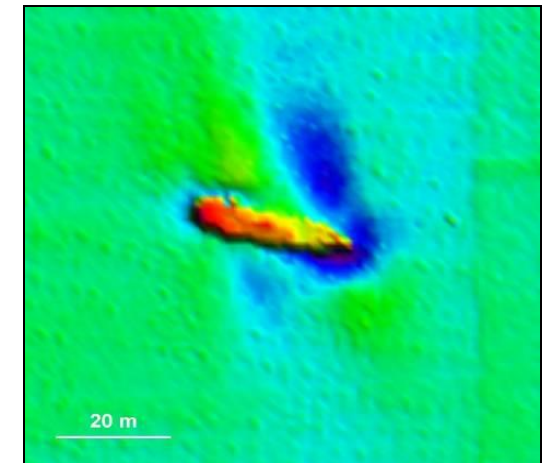
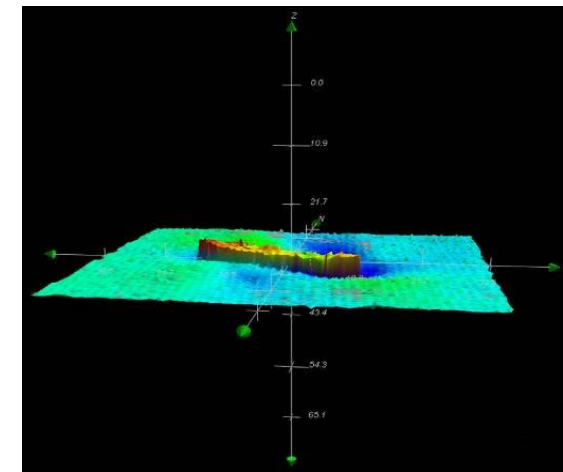
Larn, B. and Larn, R. 2002 Shipwreck Index of Ireland. Surrey. Lloyd's Register–Fairplay Ltd.

www.infomar.ie

www.irishwrecksonline.net

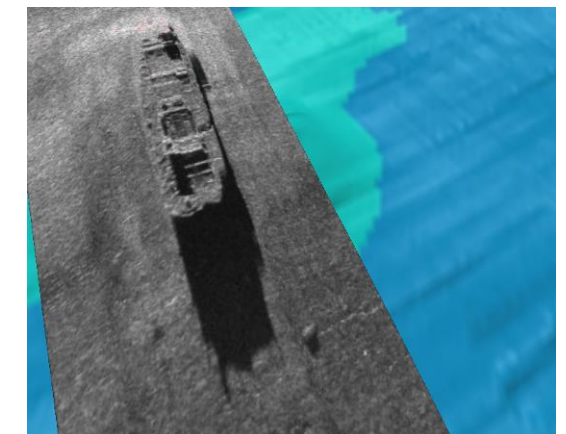
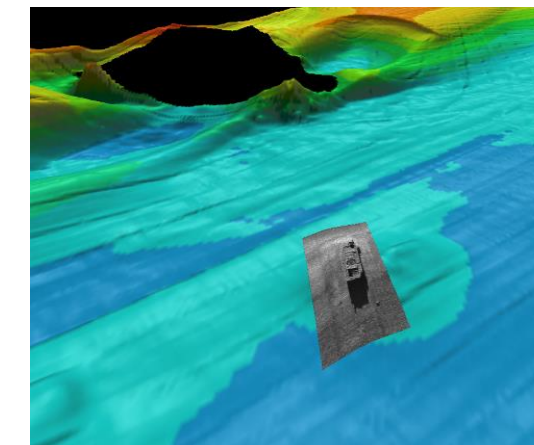
<https://www.archaeology.ie/underwater-archaeology>

WRECK IMAGERY



Length 28.5 m, Width 5.5 m, Maximum Height 3 m, Average Height 2 m

The *Guide Me II* is orientated WNW-ESE on the seafloor. The shallow water allows the multibeam to clearly resolve the bow (right) from stern (left) end of the vessel. Sediment scouring trends northwards from the bow end, caused by current flow deflected around the ship.



(a)

(b)

Side scan imagery of the *Guide Me II* draped onto 3D multibeam data. The side scan data was acquired by the Geological Survey of Ireland in 2007. Image (a) shows the Muglins in the background.



A forward looking gun from the *Guide Me II* recovered by divers (picture courtesy of the Underwater Archaeology Unit)