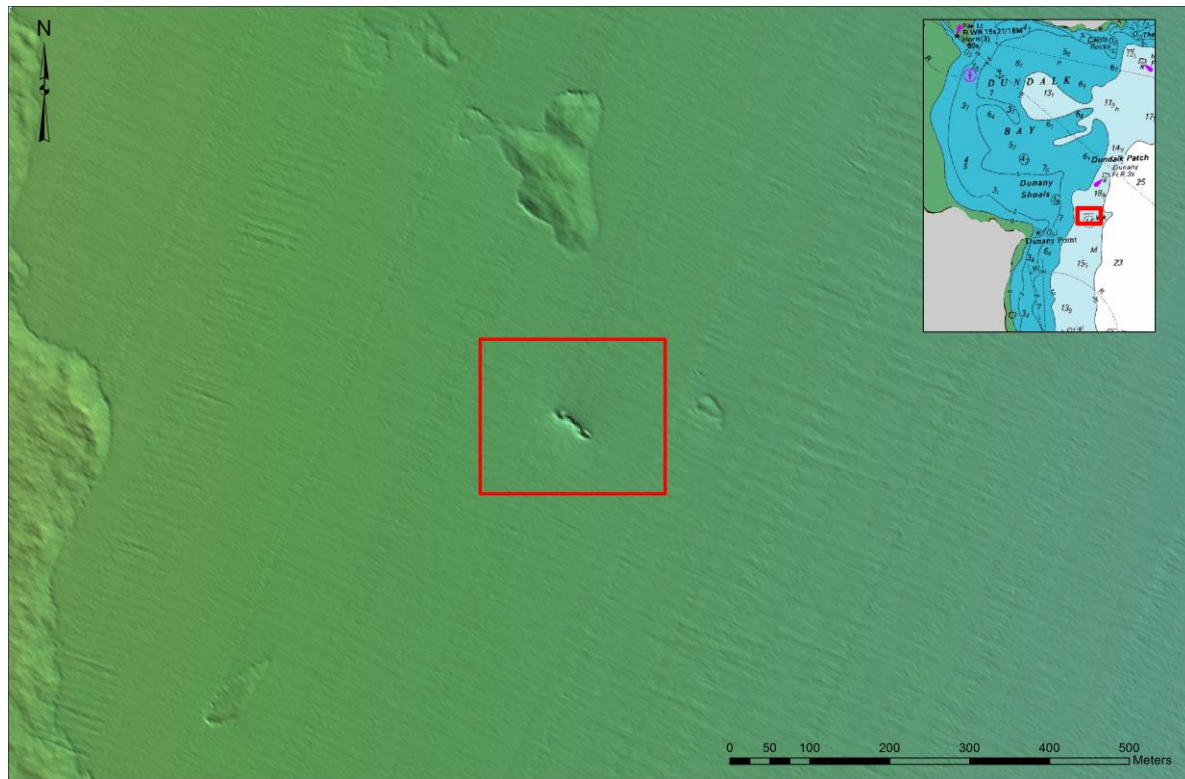
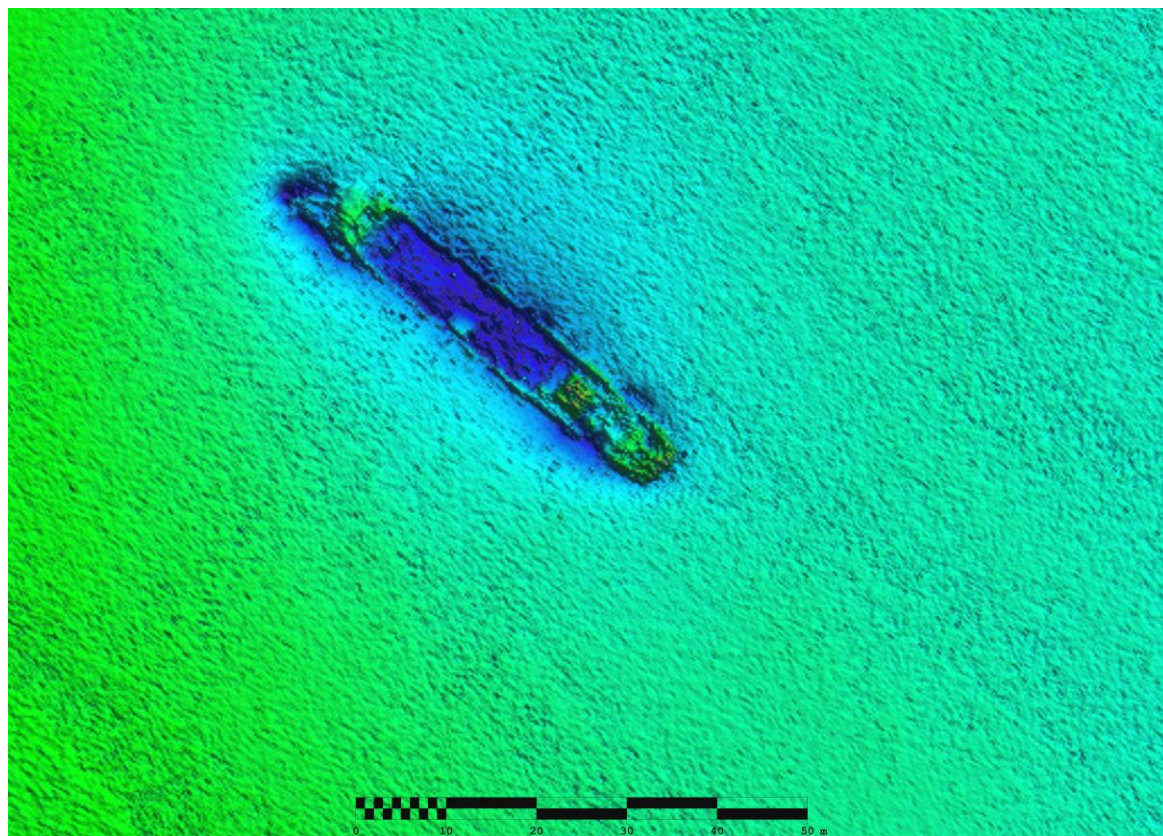


WRECK IMAGERY



Above the location of the SS *Topaz* off Dunany Point, Co Louth and below an image of the SS *Topaz* from the shaded relief (25cm resolution) acquired during the INIS Hydro survey CV11_INISHydro, Dundalk Bay.



LOCATION

Location 4 km NE of Dunany Point

Coordinates -06° 10' 34.90" W
53° 52' 12.73" N

Depth of Water 14m

VESSEL INFORMATION

Vessel type Steamship

Flag British

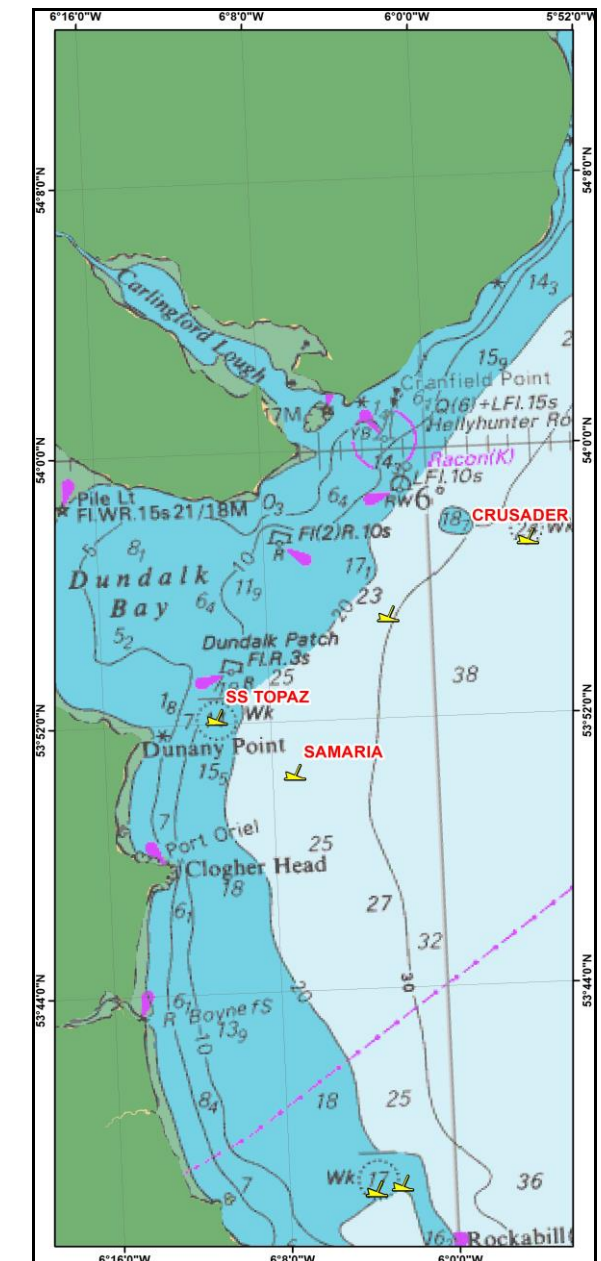
Vessel Dimensions 49 m (l), 17.5 m (b), 3 m (h)

Date of building 1883

DETAILS OF SINKING

The SS *Topaz* sailed from Workington around 8.20 a.m. on December 27th 1891, for Dundalk, under the command of Mr. John Quirk carrying a cargo of steel rails. At approximately 4:45 a.m. on the morning of December 28th 1891 the SS *Topaz* encountered a WSW force 4 wind and struck Dunany Reef before drifting into deeper water and sinking. The crew took to a lifeboat and landed at Greenore.

SS TOPAZ



An Roinn
Ealaíon, Oidhreachta agus Gaeltachta
Department of
Arts, Heritage and the Gaeltacht

INFOMAR WRECK
INFORMATION SHEET 23

VESSEL HISTORY

The SS *Topaz* was a British screw steamship. She was built of iron by Thomas B. Seath Rutherglen, of Glasgow, in 1883. Her length was 161 ft., her breadth 23.25 ft., and her depth 11 ft. She was fitted with two compound direct-acting vertical inverted engines of 60 h.p. combined. Her gross tonnage was 352.92 tons, and her registered tonnage 168.07 tons. The SS *Topaz* was owned by J.S. Mack of Liverpool. In 1892-93 Lloyds employed the diver Rigden to salvage steel rails from the wreck.

DIVE INFORMATION

All steel rails were lifted plus engines and working gear in the 1892-3 salvage. The hull is now still almost intact. The boiler and the stern are the highest parts at almost 3mtrs high.

Wrecks over 100 years old and archaeological objects found underwater are protected under the National Monuments (Amendment) Acts 1987 and 1994. Significant wrecks less than 100 years old can be designated by Underwater Heritage Order (UHO) on account of their historical, archaeological or artistic importance

As the SS *Topaz* is over 100 years old, it is protected and a license is required to dive the site which can be obtained from:

<https://www.archaeology.ie/licences/dive-survey-licence>

ABOUT INFOMAR

Covering some 125,000 square kilometres of underwater territory, INFOMAR (the **IN**tegrated Mapping **FO**r the Sustainable Development of Ireland's **MAR**ine Resource) project will produce integrated mapping products covering the physical, chemical and biological features of the seabed. INFOMAR will initially focus on 26 priority bays and three priority areas around the coast delivering: hydrographic maps, illustrating everything from sandbars to underwater canyons and cliffs; seabed classification maps showing the type of sediment on the seabed. INFOMAR provides key baseline data to support coastal and inshore development. Making this information available to the world aims to stimulate research and development of Ireland's 220 million acres under the sea. The data will be of interest to fisheries managers, aquaculture operators, coastal zone managers and engineers, offshore engineering interests, licensing authorities and those carrying out environmental impact assessments. Indeed this unique dataset is of interest in its own right because of the sheer volume of data collected

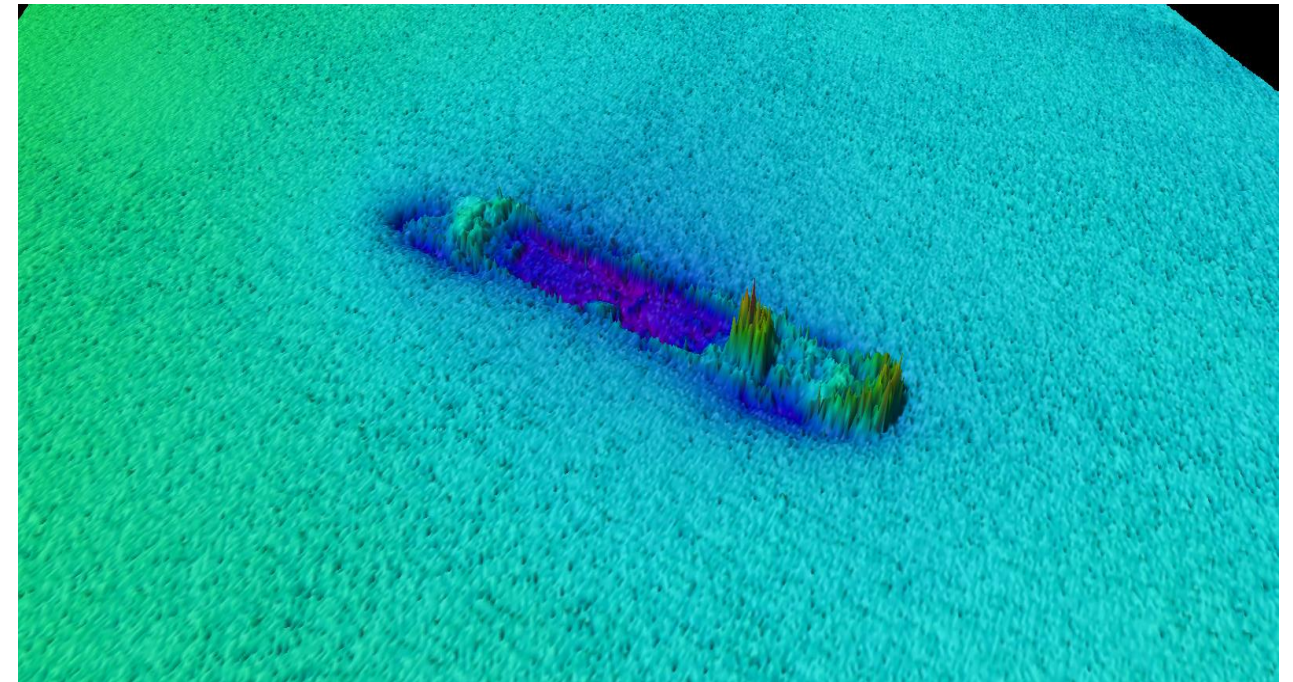
FURTHER READING/REFERENCES

www.infomar.ie

<https://www.archaeology.ie/underwater-archaeology>

www.irishwrecksonline.net

WRECK IMAGERY



Above is a 3D image of the SS *Topaz* using Fledermaus 3D visualisation software and below an along track view of the water column over the SS *Topaz* captured using Caris Hips & Sips software

