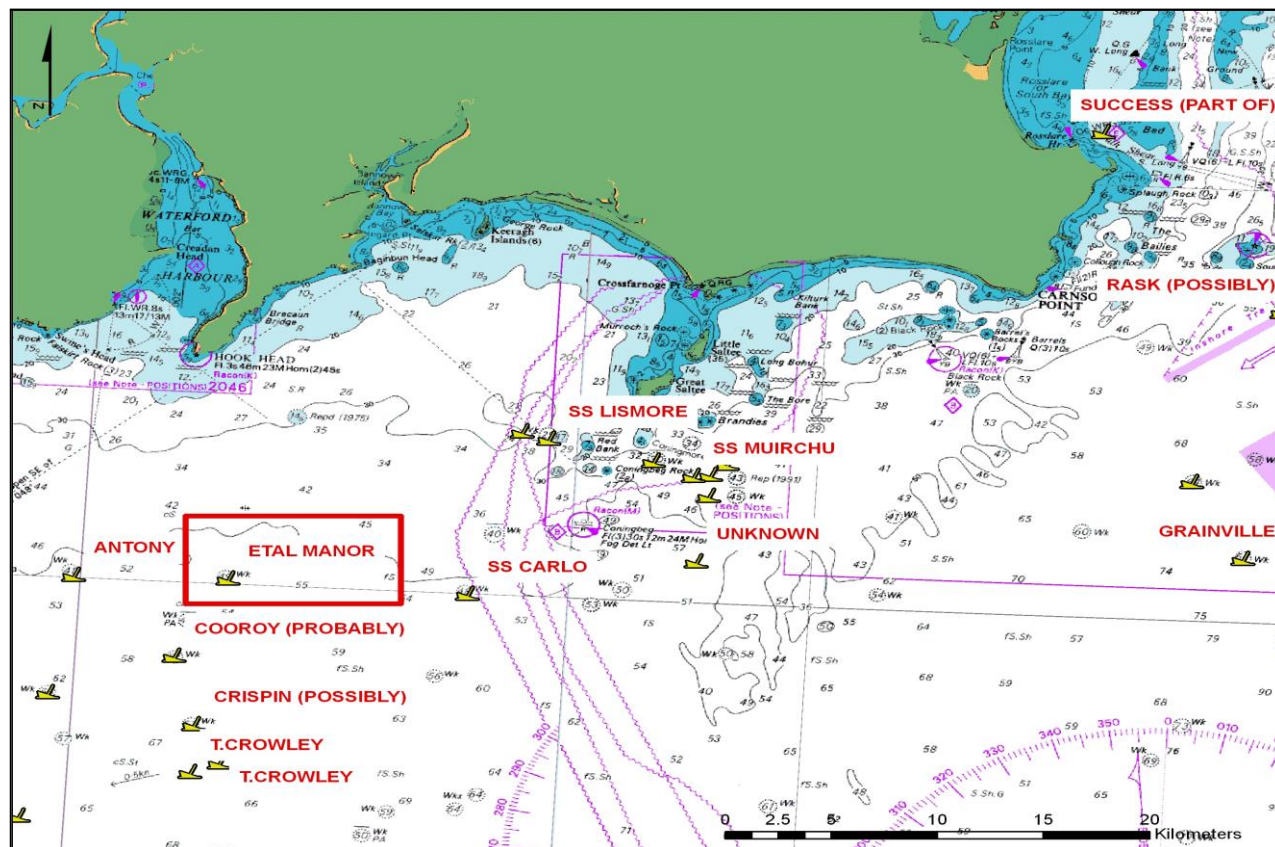
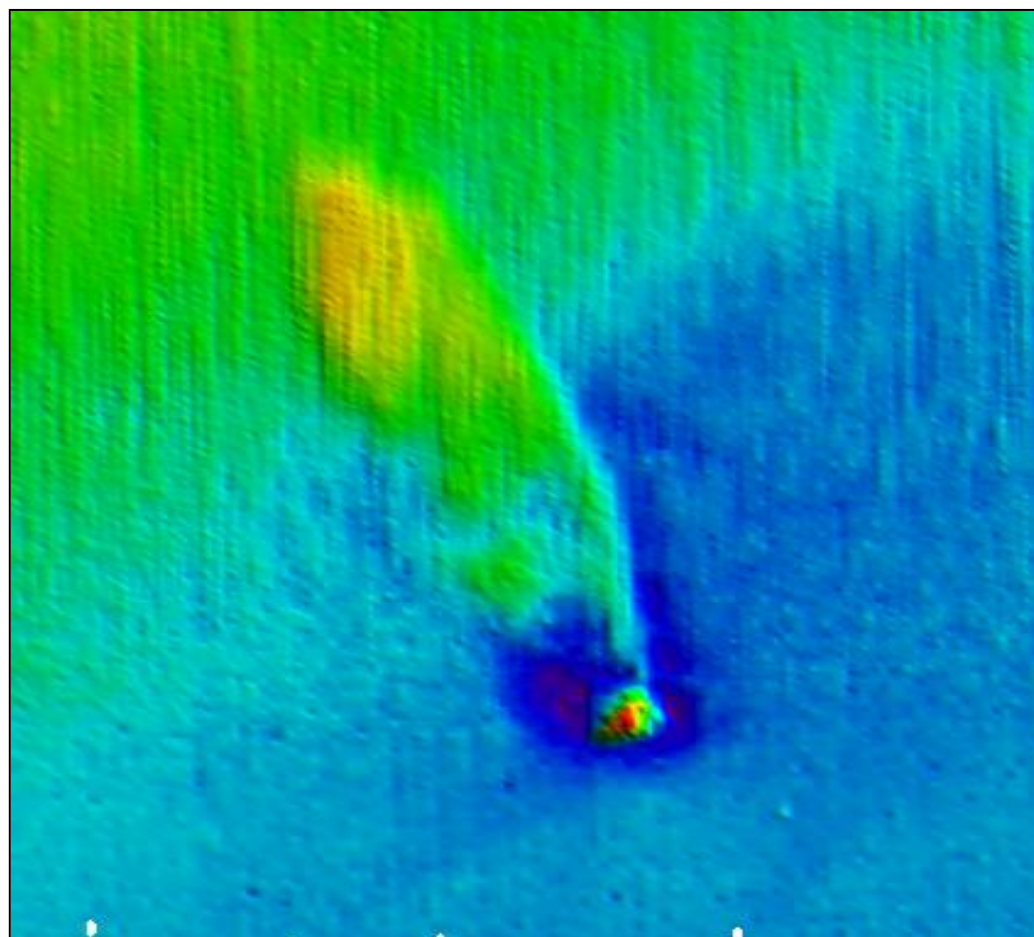


## WRECK IMAGERY



Above the location of the SS *Etal Manor* off the south coast and below an image of the SS *Etal Manor* from the shaded relief acquired during the INFOMAR survey CV10\_02, Southern priority area.



## LOCATION

**Location** 13.5 km South of Hook Head

**Coordinates** -06° 53' 57.518" W  
52° 00' 12.273" N

**Depth of Water** 54.5 m

## VESSEL INFORMATION

**Vessel type** Steam Collier

**Flag** British

**Vessel Dimensions** 81.7 m (l),  
11.6 m (b), 5.5 m (d)

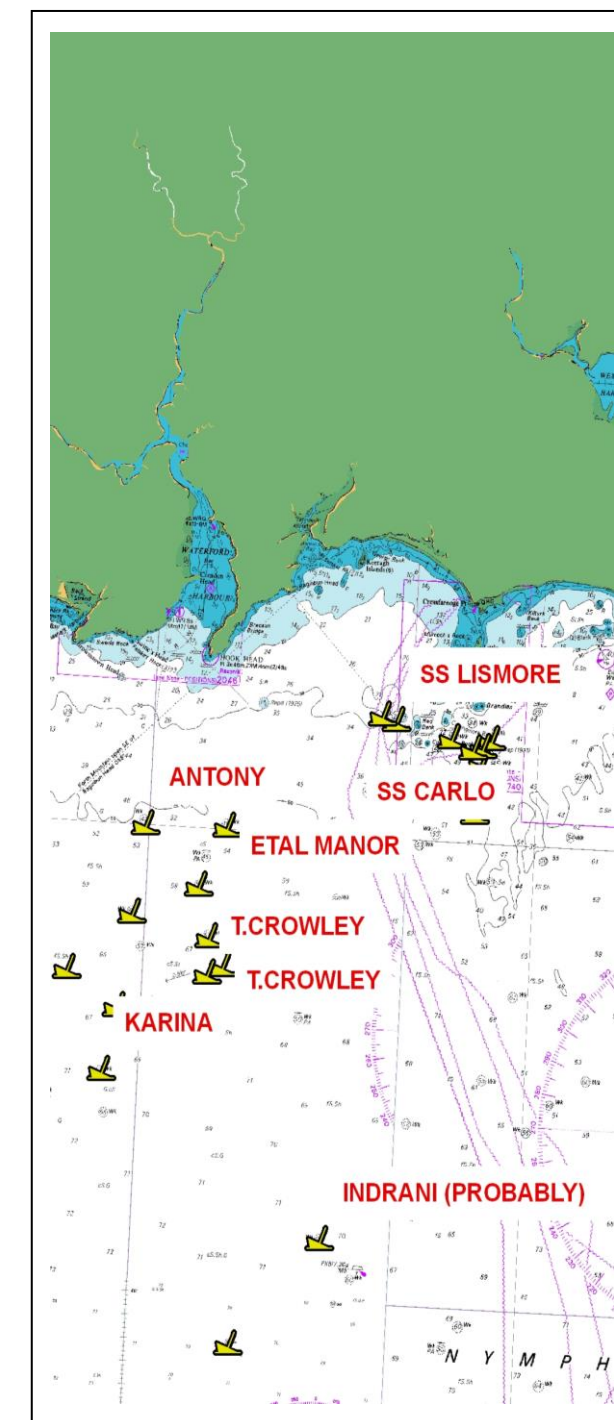
**Date of building** 1916

## DETAILS OF SINKING

On the 19th September 1917 the SS *Etal Manor* was sailing from Barry to Queenstown. Without warning she was torpedoed by German submarine UC-48 when 7 miles S by W from Hook Head, Co. Waterford, Ireland. 6 lives were lost including the Master.



## SS *ETAL MANOR*



INFOMAR WRECK  
INFORMATION SHEET 15



## VESSEL HISTORY

The SS *Etal Manor* was built in 1916 by J. Crown & Sons Ltd., Sunderland. At the time of her loss the SS *Etal Manor* was owned by J Fenwick & sons, London. The SS *Etal Manor* had two boilers and a triple expansion engine.

## DIVE INFORMATION

Wrecks over 100 years old and archaeological objects found underwater are protected under the National Monuments (Amendment) Acts 1987 and 1994. As the SS *Etal Manor* is over 100 years old, it is protected and a license is required to dive the site which can be obtained from:

<https://www.archaeology.ie/licences/dive-survey-licence>

## ABOUT INFOMAR

Covering some 125,000 square kilometres of underwater territory, INFOMAR (the **IN**tegrated Mapping **FO**r the Sustainable Development of Ireland's **MAR**ine Resource) project will produce integrated mapping products covering the physical, chemical and biological features of the seabed. INFOMAR will initially focus on 26 priority bays and three priority areas around the coast delivering: hydrographic maps, illustrating everything from sandbars to underwater canyons and cliffs; seabed classification maps showing the type of sediment on the seabed. INFOMAR provides key baseline data to support coastal and inshore development. Making this information available to the world aims to stimulate research and development of Ireland's 220 million acres under the sea. The data will be of interest to fisheries managers, aquaculture operators, coastal zone managers and engineers, offshore engineering interests, licensing authorities and those carrying out environmental impact assessments. Indeed this unique dataset is of interest in its own right because of the sheer volume of data collected

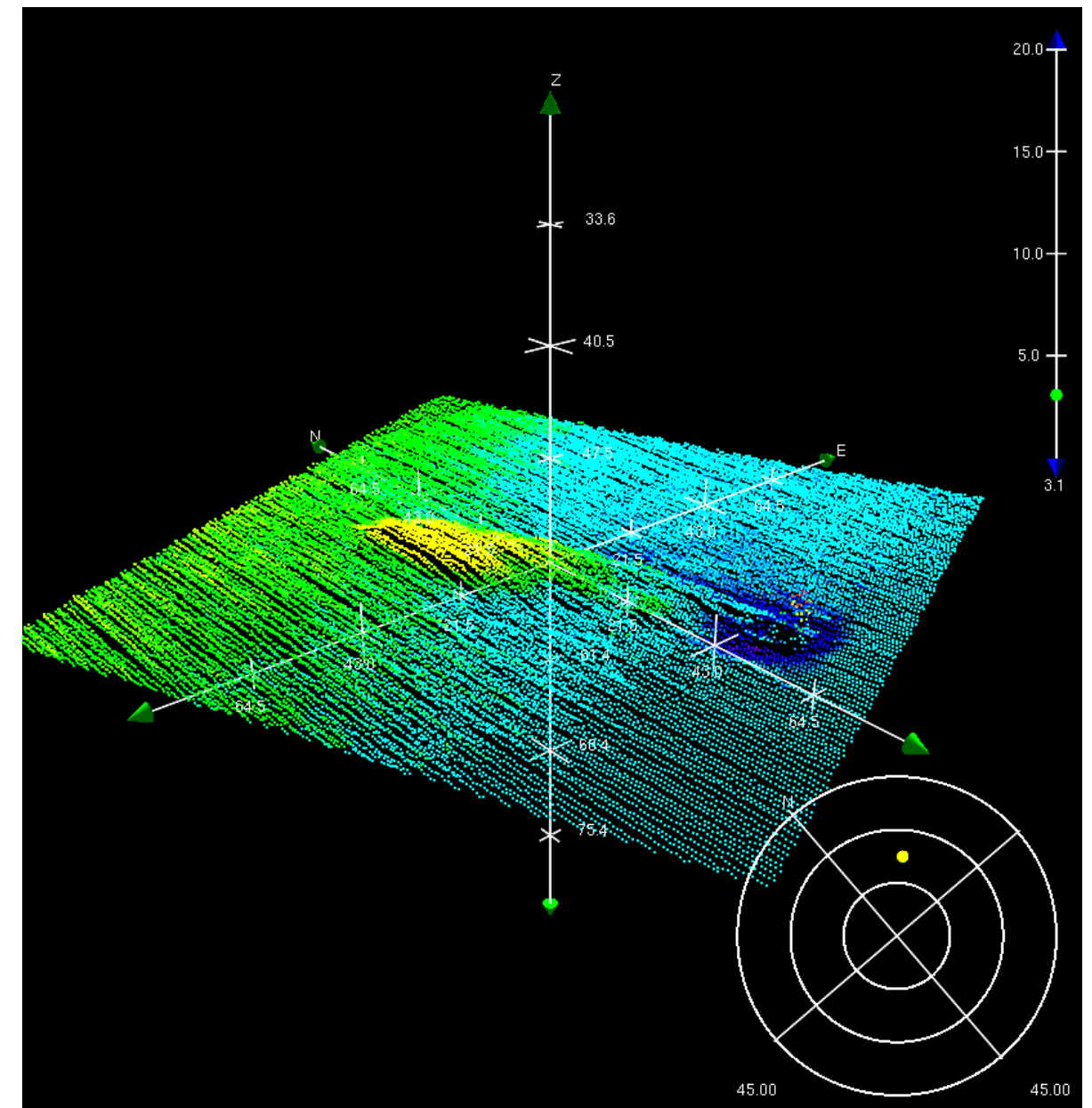
## FURTHER READING/REFERENCES

[www.infomar.ie](http://www.infomar.ie)

[www.irishwrecksonline.net](http://www.irishwrecksonline.net)

<https://www.archaeology.ie/underwater-archaeology>

## WRECK IMAGERY



Above a 3D image of the SS *Etal Manor* using Caris Hips & Sips Hydrographic software and below a postcard of the