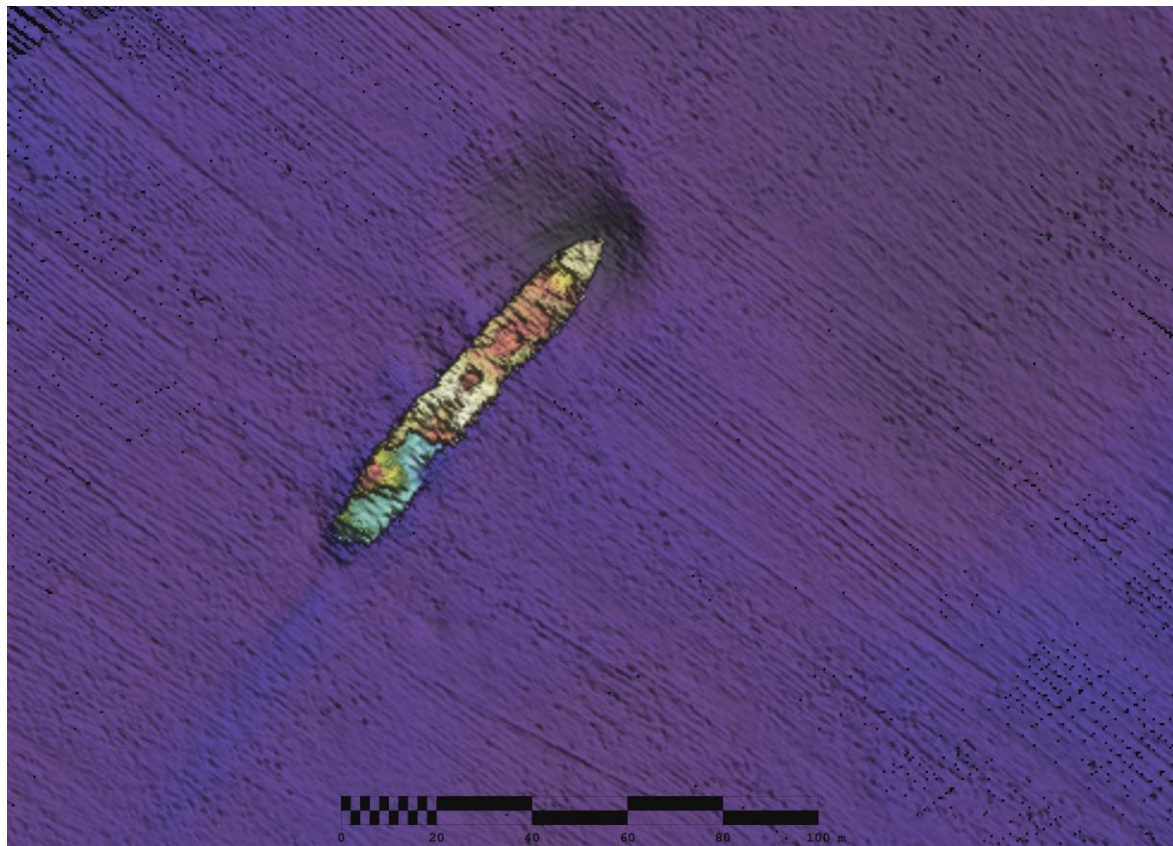


## WRECK IMAGERY



Above the location of the SS *Atxeri Mendi* from shaded relief imagery acquired during Infomar survey CV12\_02 Irish Sea area and below an image of the SS *Atxeri Mendi* at 50cm resolution.



## LOCATION

**Location** 11km SE of Tuskar Rock

**Coordinates** -06° 03' 29.58" W  
52° 09' 46.28" N

**Depth of Water** 78.5 m

## VESSEL INFORMATION

**Vessel type** Cargo Ship

**Flag** Spanish

**Vessel Dimensions** 88.4 m (l), 12.8 m (b),  
5.5 m (d)

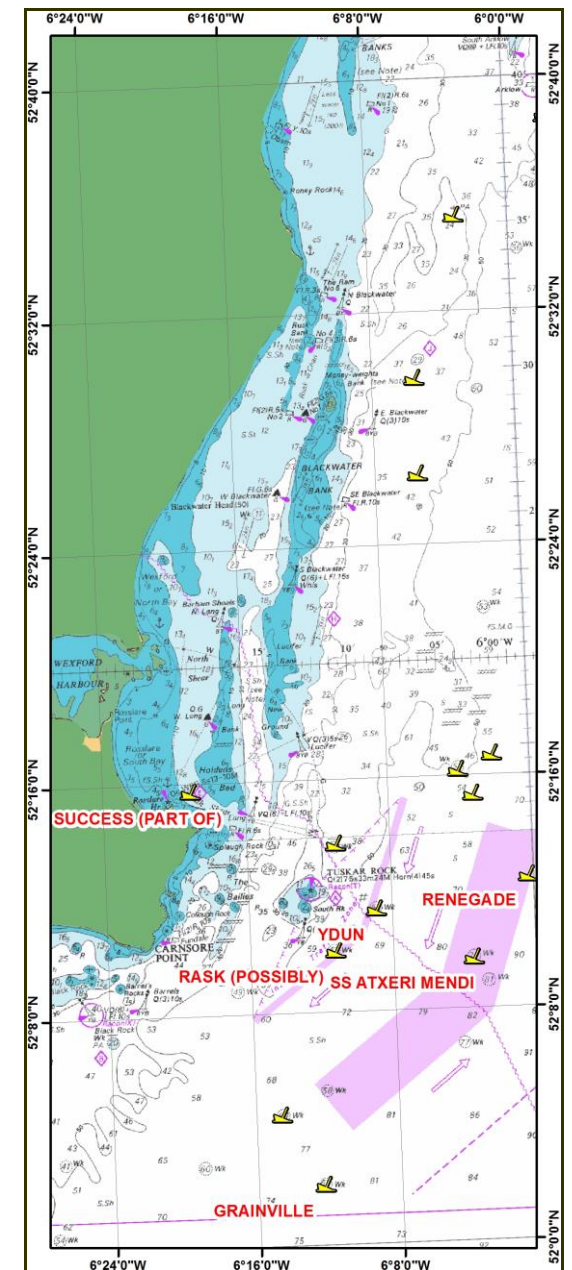
**Date of building** 1899

## DETAILS OF SINKING

On August 29<sup>th</sup> 1918 while on route from Glasgow to Barcelona the SS *Atxeri Mendi* was torpedoed and sank by the German submarine *UB-125*. The SS *Atxeri Mendi* was carrying a cargo of coal.



## SS ATXERI MENDI



## INFOMAR WRECK INFORMATION SHEET 28

## VESSEL HISTORY

The SS *Atxeri Mendi* was a 2,424 ton cargo ship with steam propulsion built in 1899 by William Gray & Co. Ltd., West Hartlepool in Sunderland. She was owned by Ramón Sota and Eduardo Aznar, who began a partnership in 1902. The company was formed as Sota y Aznar in Bilbao in 1906, as cargo ship owners. In 1939 Ramón Sota and Eduardo Aznar split and the company became Naviera Aznar S.A. On September 4<sup>th</sup> 1918 The New York Tribune reported under the headline “Pro-Ally feeling growing in Madrid” that the Spanish Government had seized a German steamer as compensation for the torpedoed *Atxeri Mendi* as the Spanish-German negotiations had reached a highly critical stage.

## DIVE INFORMATION

The SS *Atxeri Mendi* lies almost intact and upright in an NE-SW direction with a slight scour surrounding its bow in a general depth of 87 m.

Wrecks over 100 years old and archaeological objects found underwater are protected under the National Monuments (Amendment) Acts 1987 and 1994. Significant wrecks less than 100 years old can be designated by Underwater Heritage Order (UHO) on account of their historical, archaeological or artistic importance

Further information can be obtained from:

<https://www.archaeology.ie/underwater-archaeology>

## ABOUT INFOMAR

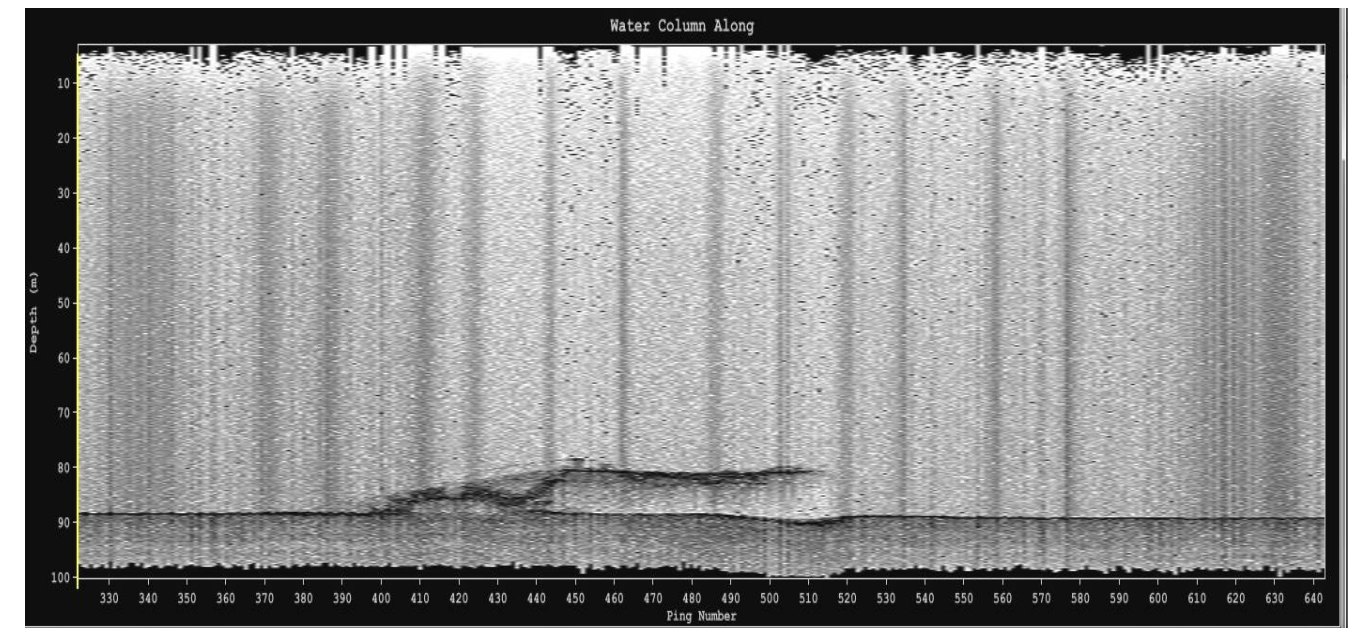
Covering some 125,000 square kilometres of underwater territory, INFOMAR (the **IN**tegrated Mapping **FO**r the Sustainable Development of Ireland’s **MAR**ine Resource) project will produce integrated mapping products covering the physical, chemical and biological features of the seabed. INFOMAR will initially focus on 26 priority bays and three priority areas around the coast delivering: hydrographic maps, illustrating everything from sandbars to underwater canyons and cliffs; seabed classification maps showing the type of sediment on the seabed. INFOMAR provides key baseline data to support coastal and inshore development. Making this information available to the world aims to stimulate research and development of Ireland’s 220 million acres under the sea. The data will be of interest to fisheries managers, aquaculture operators, coastal zone managers and engineers, offshore engineering interests, licensing authorities and those carrying out environmental impact assessments. Indeed this unique dataset is of interest in its own right because of the sheer volume of data collected

## FURTHER READING/REFERENCES

[www.infomar.ie](http://www.infomar.ie)

[www.irishwrecksonline.net](http://www.irishwrecksonline.net)

## WRECK IMAGERY



Above an image of the water column data along track of the SS *Atxeri Mendi* from Caris Hips and Sips software and below a 3D image of the SS *Atxeri Mendi* captured using Fledermaus visualisation software.

