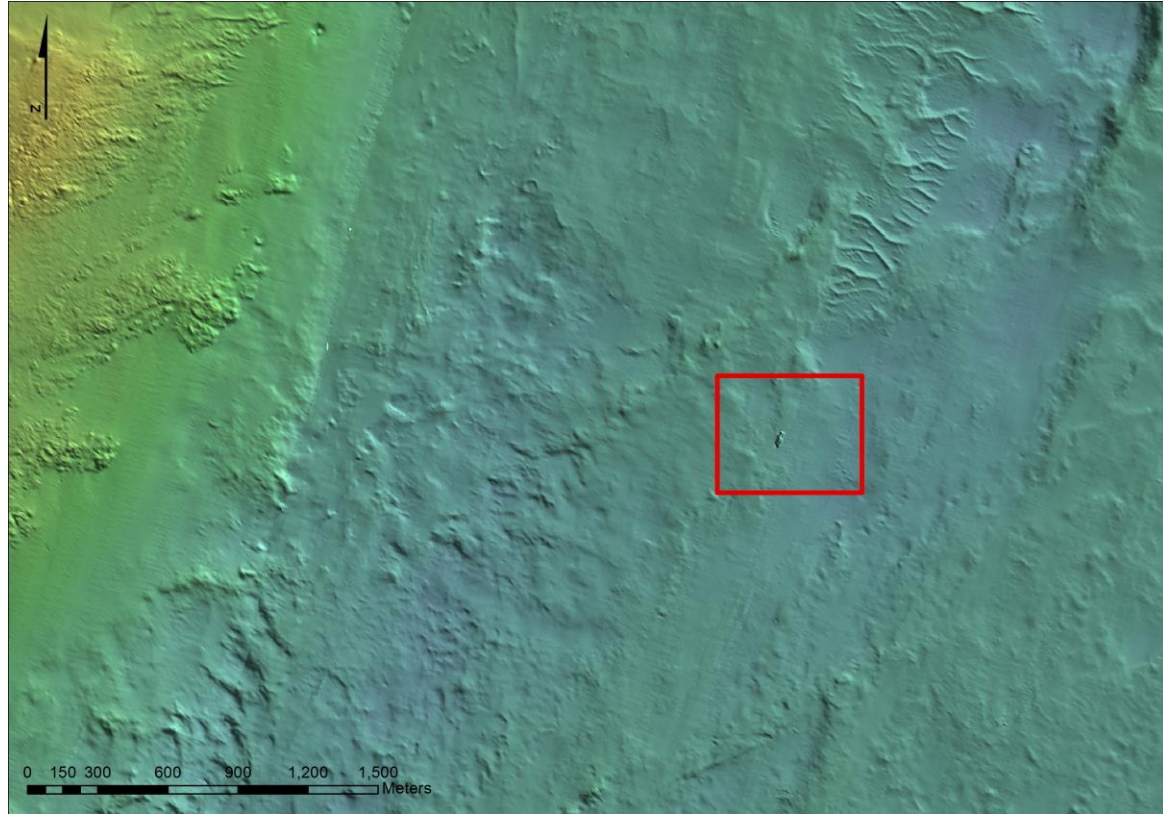
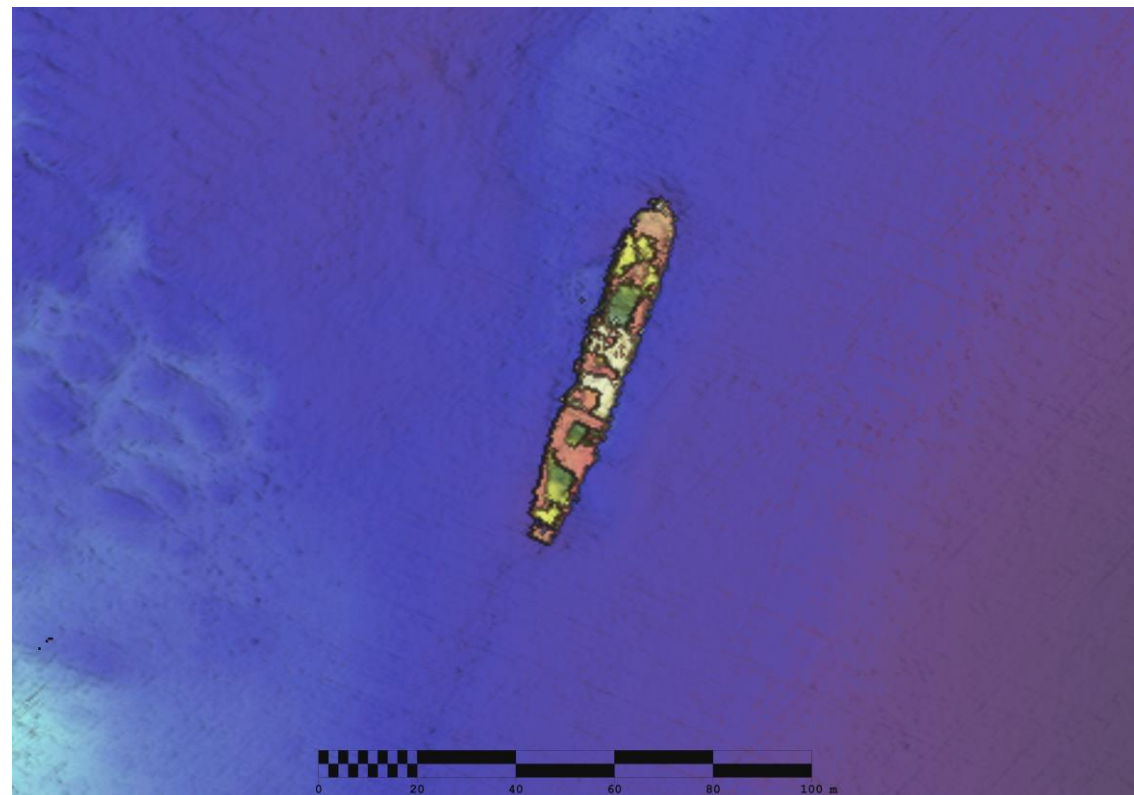


WRECK IMAGERY



Above the location of the SS *Ydun* from shaded relief imagery acquired during Infomar survey CV12_02 Irish Sea area and below an image of the SS *Ydun* at 50cm resolution.



LOCATION

Location 4 km E of Tuskar Rock

Coordinates -06° 08' 52.68" W
52° 11' 31.96" N

Depth of Water 61.8 m

VESSEL INFORMATION

Vessel type Cargo Ship

Flag Norwegian

Vessel Dimensions 73.5 m (l), 10.7 m (b),
5.3 m (d)

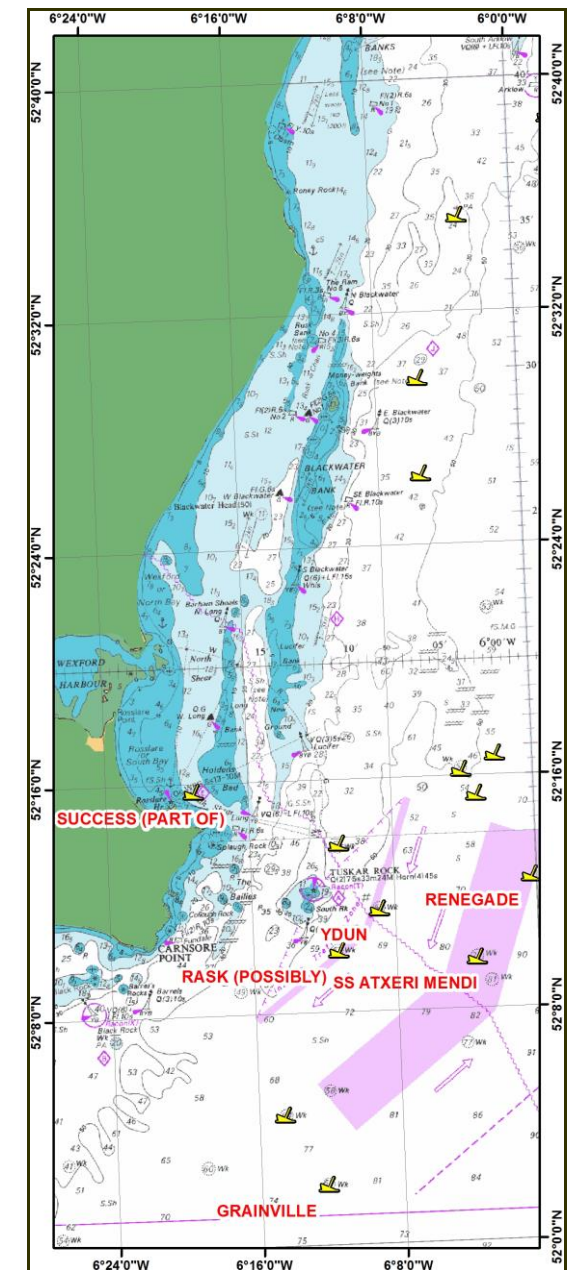
Date of building 1899

DETAILS OF SINKING

On October 24th 1915 the SS *Ydun* was on route from Parrisborough to Glasgow with a cargo of timber when she was lost after a collision with SS *Isabel Monks*.



SS YDUN



INFOMAR WRECK INFORMATION SHEET 30

VESSEL HISTORY

The *Ydun* was a 1265 ton steam propelled cargo ship built in 1899 in Lubeck Germany by Henry Koch. It had a triple expansion engine built by Ottensener Maschinenfabrik (Lubeck, Germany), with 2 boilers and a single shaft.

DIVE INFORMATION

The *Ydun* lies almost intact and upright in an NE-SW direction in a general depth of 71 m.

Wrecks over 100 years old and archaeological objects found underwater are protected under the National Monuments (Amendment) Acts 1987 and 1994. Significant wrecks less than 100 years old can be designated by Underwater Heritage Order (UHO) on account of their historical, archaeological or artistic importance

Further information can be obtained from:

<https://www.archaeology.ie/licences/dive-survey-licence>

ABOUT INFOMAR

Covering some 125,000 square kilometres of underwater territory, INFOMAR (the **IN**tegrated Mapping **FO**r the Sustainable Development of Ireland's **MAR**ine Resource) project will produce integrated mapping products covering the physical, chemical and biological features of the seabed. INFOMAR will initially focus on 26 priority bays and three priority areas around the coast delivering: hydrographic maps, illustrating everything from sandbars to underwater canyons and cliffs; seabed classification maps showing the type of sediment on the seabed. INFOMAR provides key baseline data to support coastal and inshore development. Making this information available to the world aims to stimulate research and development of Ireland's 220 million acres under the sea. The data will be of interest to fisheries managers, aquaculture operators, coastal zone managers and engineers, offshore engineering interests, licensing authorities and those carrying out environmental impact assessments. Indeed this unique dataset is of interest in its own right because of the sheer volume of data collected

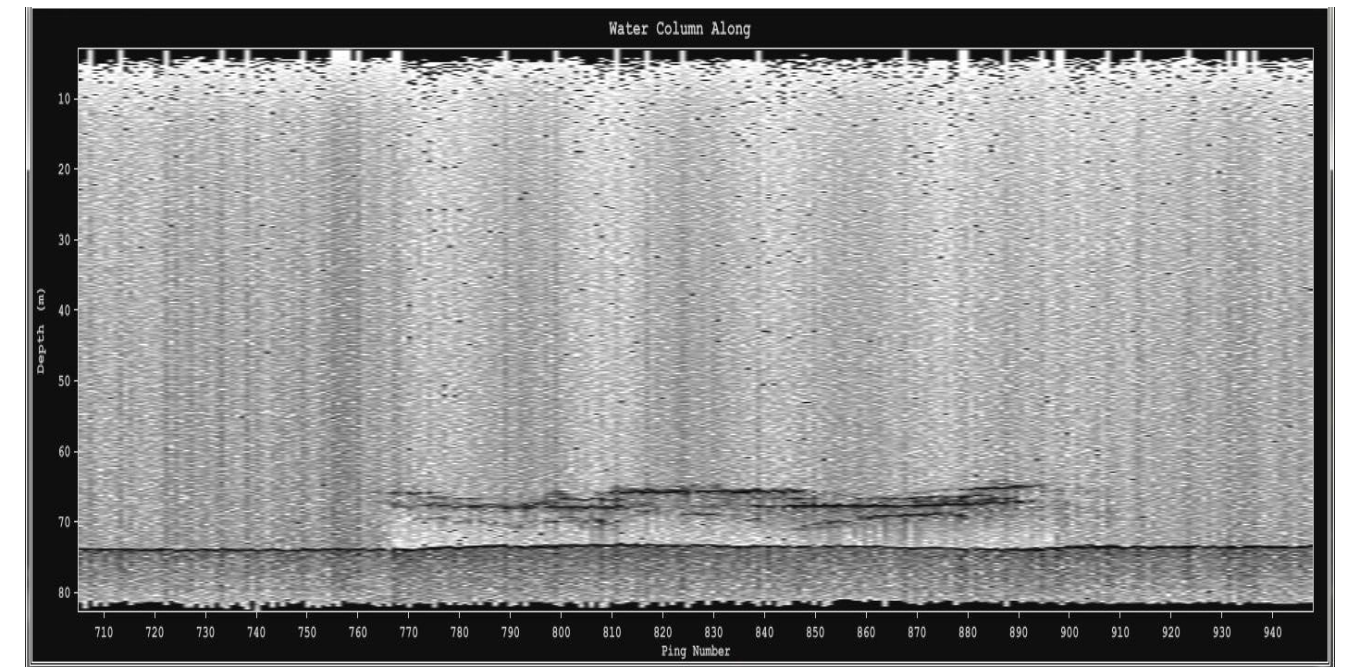
FURTHER READING/REFERENCES

www.infomar.ie

<https://www.archaeology.ie/underwater-archaeology>

www.irishwrecksonline.net

WRECK IMAGERY



Above an image of the water column data along track of the SS *Ydun* from Caris Hips and Sips software and below a 3D image of the *Ydun* captured using Fledermaus visualisation software.

