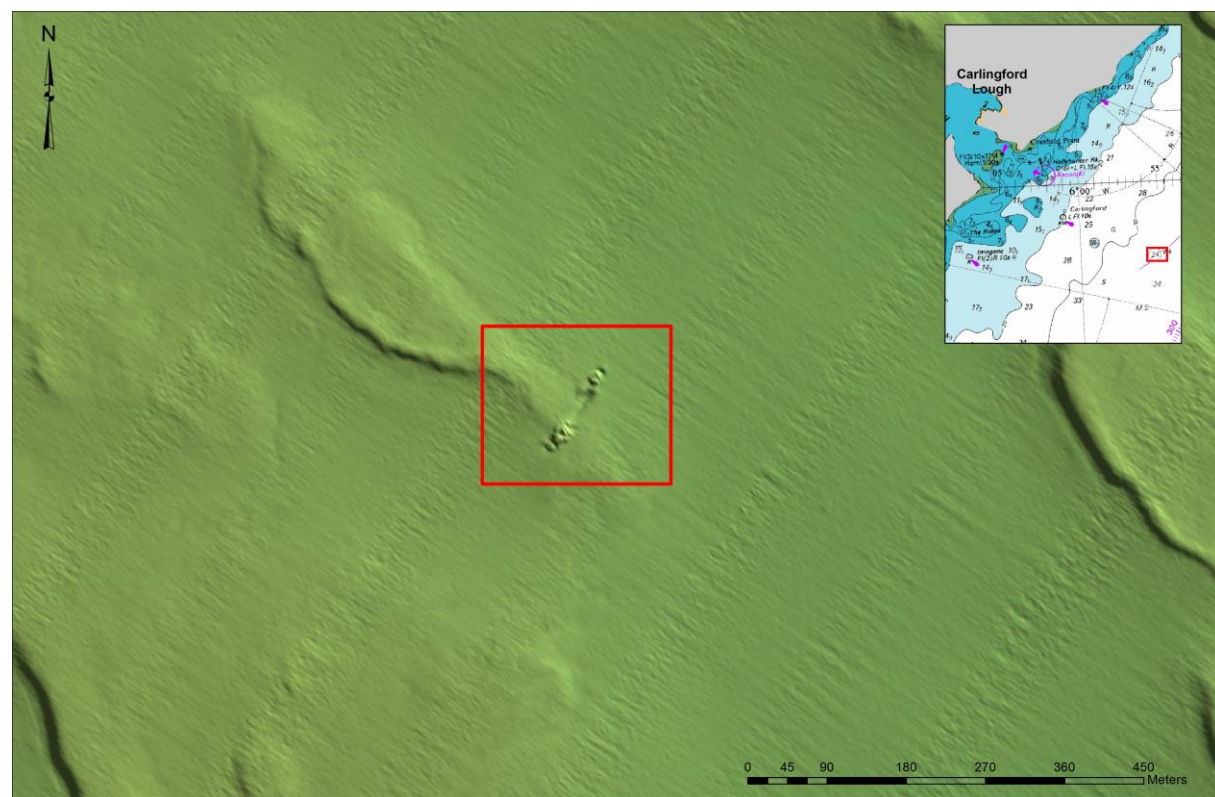
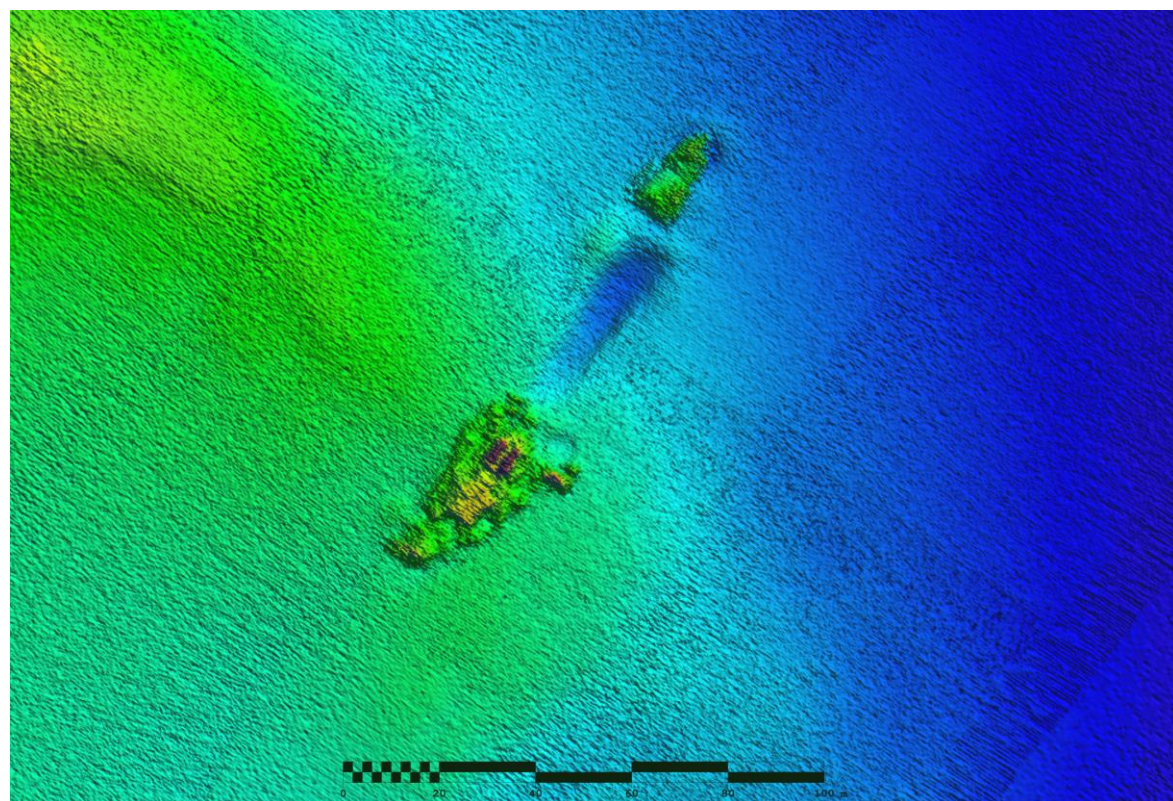


## WRECK IMAGERY



Above the location of the *Crusader* SE of Carlingford Lough and below an image of the *Crusader* from the shaded relief bathymetry acquired during the INIS Hydro survey CV11\_INISHydro, Dundalk Bay.



## LOCATION

**Location** 13 km SE of Carlingford Lough

**Coordinates** -05° 55' 14.05" W  
53° 57' 14.59" N

**Depth of Water** 30m

## VESSEL INFORMATION

**Vessel type** Barque

**Flag** Brazilian

**Vessel Dimensions** 112 m (l), 20 m (b)

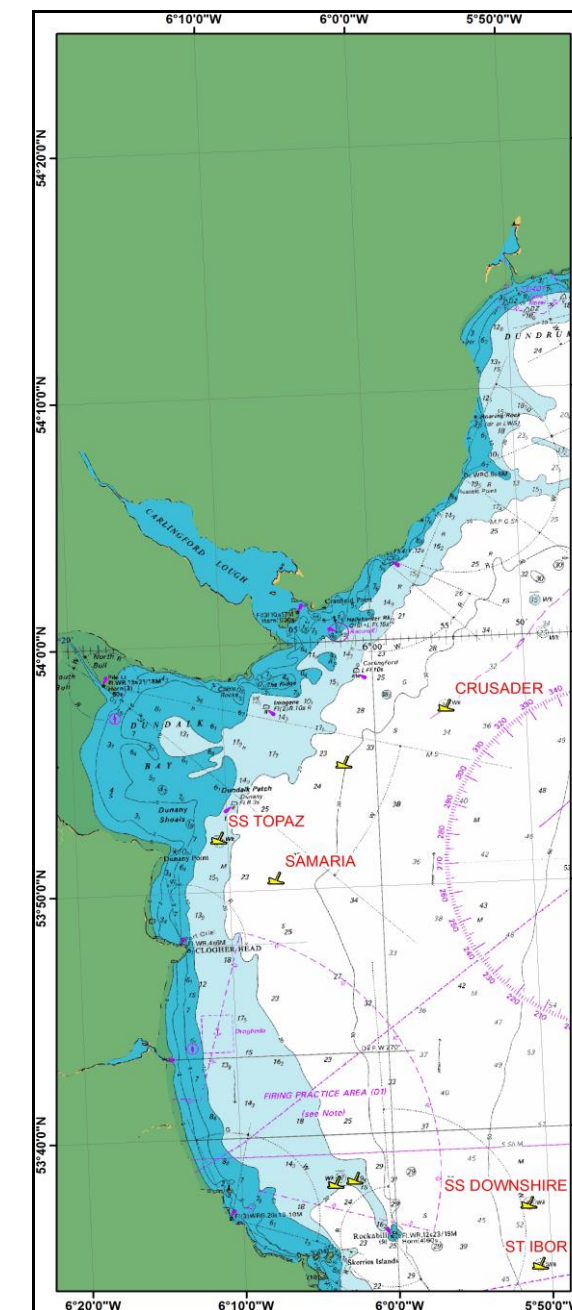
**Date of building**

## DETAILS OF SINKING

The *Crusader* sailed on the 18<sup>th</sup> February 1892 from Birkenhead for Santos and was never heard of again.



## CRUSADER



INFOMAR WRECK  
INFORMATION SHEET 24



## VESSEL HISTORY

The *Crusader* was a 500-1000 ton vessel. It is believed to be pre-1900 because of the style of port holes seen when dived on in 1977. Silver cutlery was also recovered with name 'Crusader' on it.

## DIVE INFORMATION

The wreck of the *Crusader* lies in two parts with no scour. It is believed that the wreck

Wrecks over 100 years old and archaeological objects found underwater are protected under the National Monuments (Amendment) Acts 1987 and 1994. As the *Crusader* is over 100 years old, it is protected and a license is required to dive the site which can be obtained from:

<https://www.archaeology.ie/licences/dive-survey-licence>

Under the legislation all diving on protected wreck sites or with the intention of searching for archaeological underwater material is subject to such licensing requirements.

## ABOUT INFOMAR

Covering some 125,000 square kilometres of underwater territory, INFOMAR (the **IN**tegrated Mapping **FO**r the Sustainable Development of Ireland's **MAR**ine Resource) project will produce integrated mapping products covering the physical, chemical and biological features of the seabed. INFOMAR will initially focus on 26 priority bays and three priority areas around the coast delivering: hydrographic maps, illustrating everything from sandbars to underwater canyons and cliffs; seabed classification maps showing the type of sediment on the seabed. INFOMAR provides key baseline data to support coastal and inshore development. Making this information available to the world aims to stimulate research and development of Ireland's 220 million acres under the sea. The data will be of interest to fisheries managers, aquaculture operators, coastal zone managers and engineers, offshore engineering interests, licensing authorities and those carrying out environmental impact assessments. Indeed this unique dataset is of interest in its own right because of the sheer volume of data collected

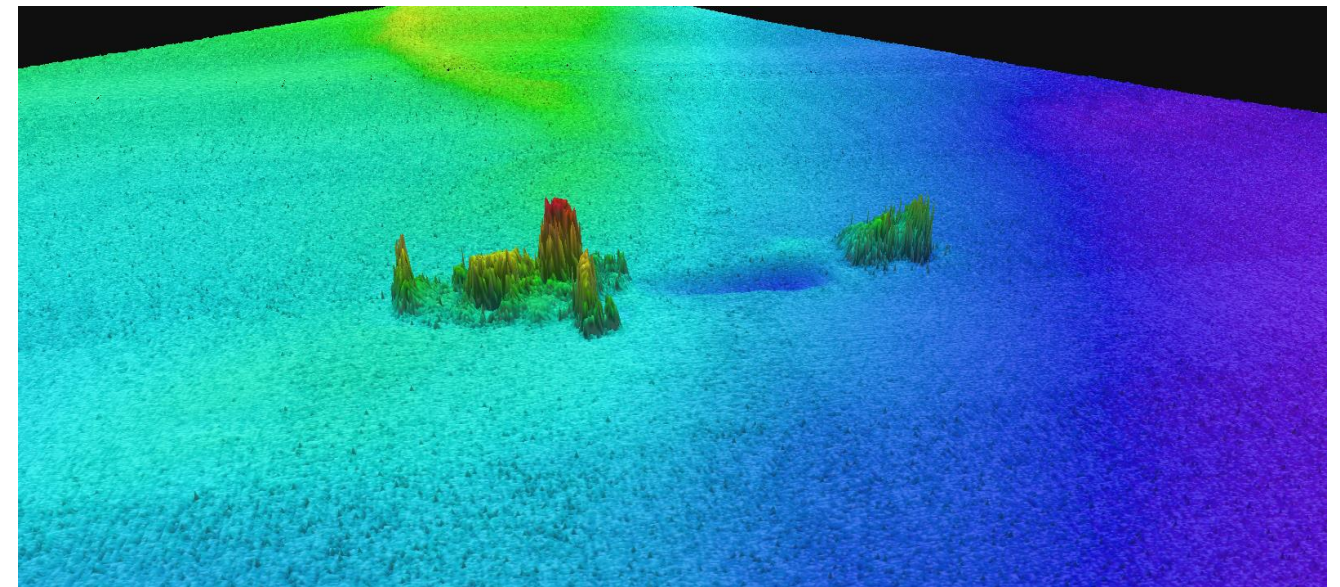
## FURTHER READING/REFERENCES

[www.infomar.ie](http://www.infomar.ie)

<https://www.archaeology.ie/underwater-archaeology>

[www.irishwrecksonline.net](http://www.irishwrecksonline.net)

## WRECK IMAGERY



Above is a 3D image of the *Crusader* using Fledermaus 3D visualisation software and below an image of the water column along the track of the *Crusader* acquired using Caris Hips & Sips processing software.

