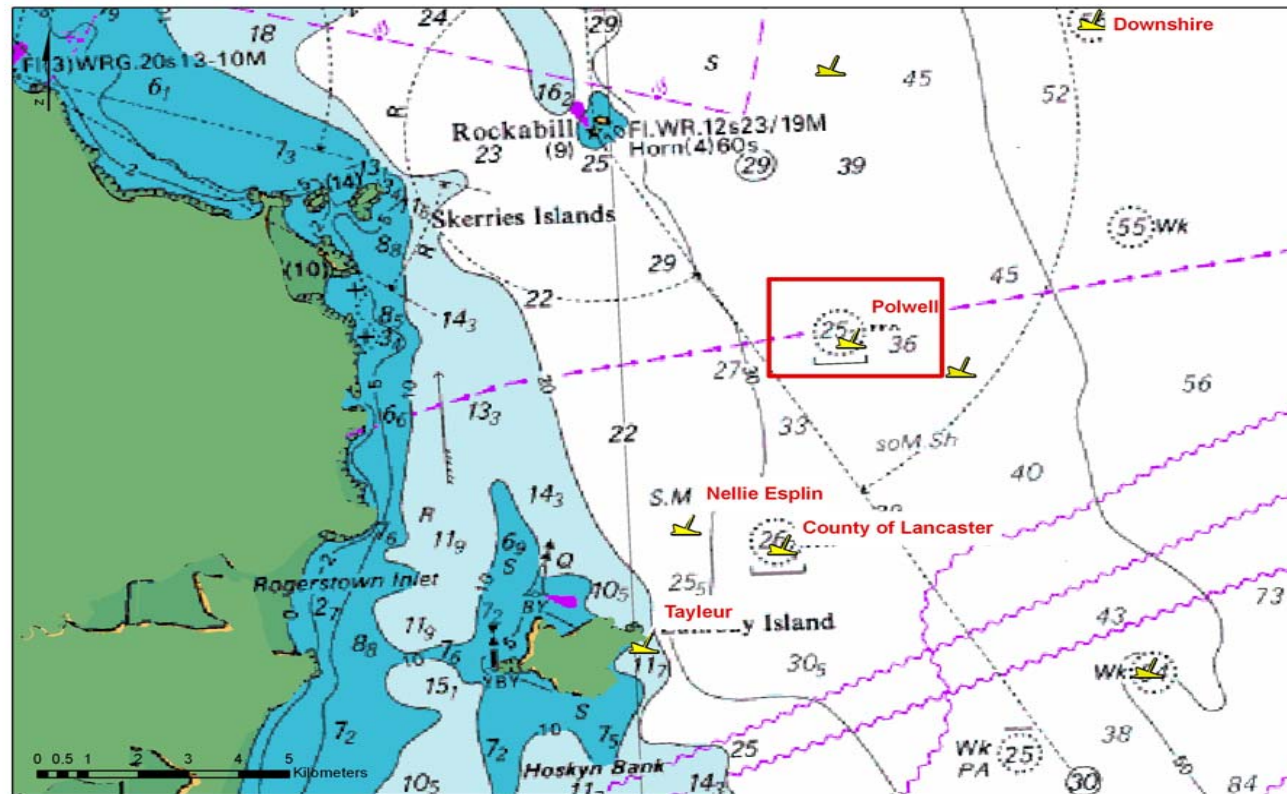
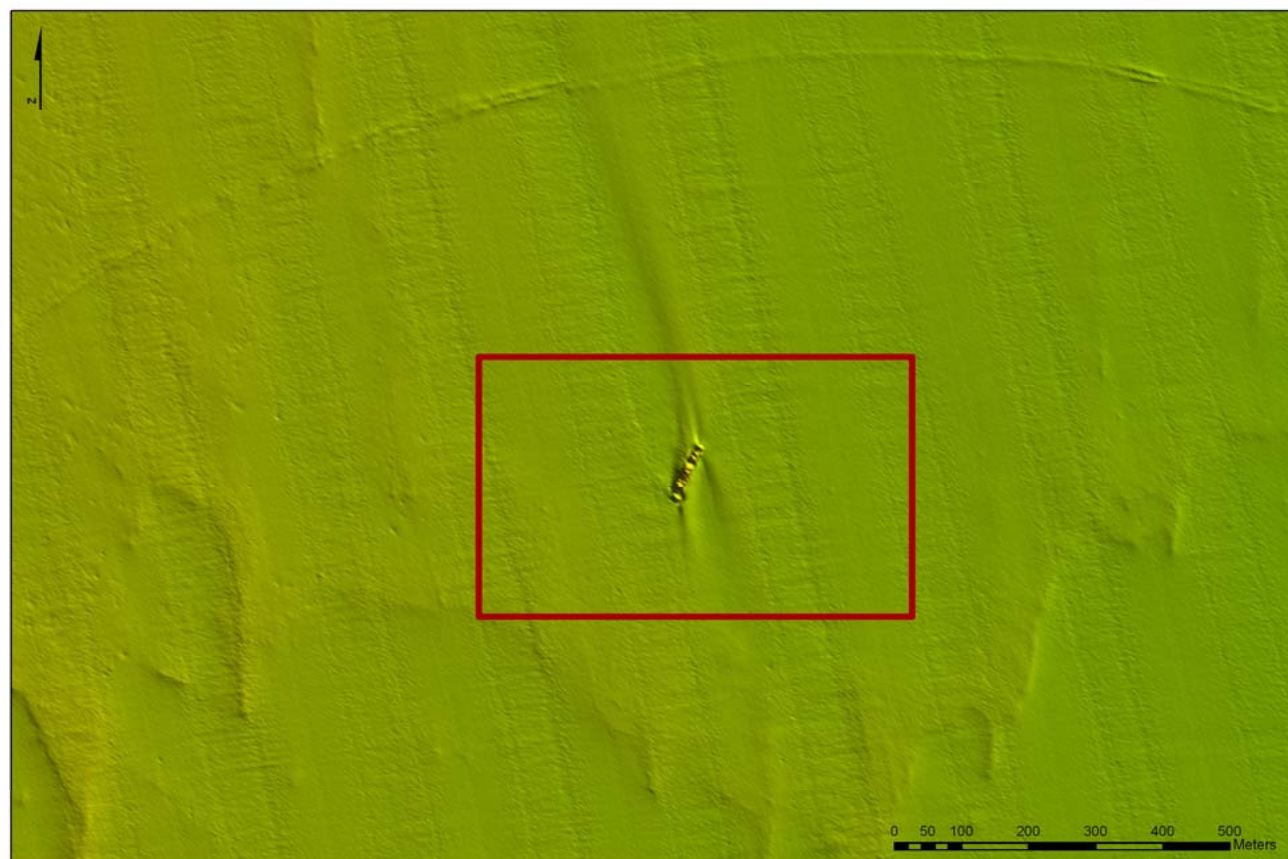


WRECK IMAGERY



Above the location of the SS *Polwell* NE of Lambay Island and below the SS *Polwell* clearly visible in the 2m NE shaded relief image acquired during CV09_05 survey.



LOCATION

Location	8km NE of Lambay Island
Coordinates	-05° 55' 56.4" W 53° 33' 12" N
Depth of Water	29.8 m

VESSEL INFORMATION

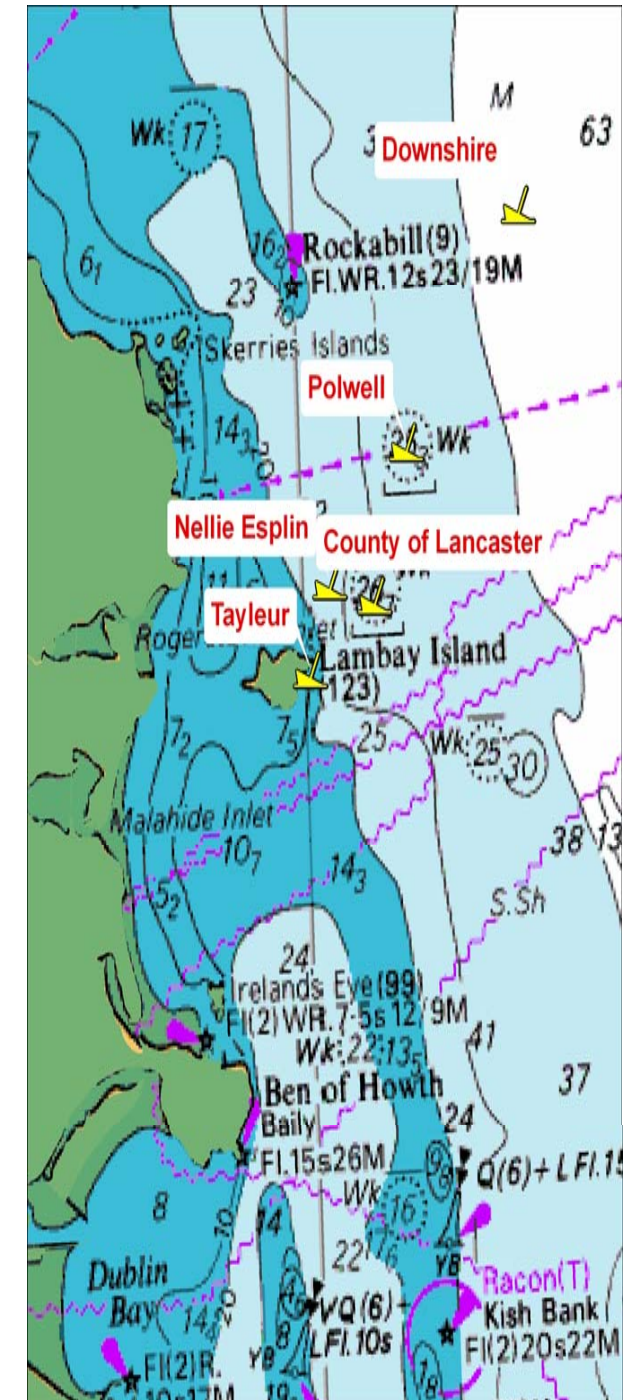
Vessel type	British Steam Collier
Flag	British
Vessel Dimensions	96.2 m (l), 11.5 m (b), 5.5 m (d)
Date of building	1888

DETAILS OF SINKING

The SS *Polwell* was bound from Troon to France with a cargo coal. On 5th June 1918 the SS *Polwell* was torpedoed by a German Submarine. The *U-96* fired a single torpedo at the *Polwell*, hitting it amidships causing it to sink immediately approximately 6 miles east of Rockabil off the north Dublin coast. The *Polwell* was one of 31 ships sunk by the *U-96* between 1917 and 1918. There was no loss of life and all 30 crew managed to safely land at Rockabil lighthouse one hour later.



SS POLWELL



INFOMAR WRECK INFORMATION SHEET 7

VESSEL HISTORY

The SS *Polwell* was originally named the *Northumbria* when it was built in Sunderland in 1888 by J.L Thompson & Son. She measured 86.56 x 11.6 x 5.53 metres and was powered by a three cylinder triple expansion engine delivering 201 HP. It had several owners during its lifetime and was renamed the *Deutscher Kaiser* when it came into German ownership and was registered in Szczecin in 1910. It was sold in 1914 and registered at Hamburg and renamed *Syra*. It was shortly after this that the *Syra* was requisitioned by the British Admiralty after being captured off Gibraltar while en route from Antwerp to the Levant. Under the control of the Shipping Controller, the *Syra* was renamed *Polwell* and operated as a defensively-armed steam collier managed by the Clyde Shipping Co., Ltd., Glasgow from 1917 to 1918.

DIVE INFORMATION

The wreck is orientated NE-SW, bow to NE. The wreck lies largely intact with little or no debris but is reported to be snagged in nets.

Wrecks over 100 years old and archaeological objects found underwater are protected under the National Monuments (Amendment) Acts 1987 and 1994. Under the legislation all diving on known protected wreck sites or with the intention of searching for archaeological underwater material is subject to licensing requirements. Licence applications are issued by the National Monuments Service of the Department of Environment, Heritage and Local Government and are available to download from http://www.archaeology.ie/servlet/apply_license.jsp

ABOUT INFOMAR

Covering some 125,000 square kilometres of underwater territory, INFOMAR (the **IN**tegrated Mapping **FO**r the Sustainable Development of Ireland's **MAR**ine Resource) project will produce integrated mapping products covering the physical, chemical and biological features of the seabed. INFOMAR will initially focus on 26 priority bays and three priority areas around the coast delivering: hydrographic maps, illustrating everything from sandbars to underwater canyons and cliffs; seabed classification maps showing the type of sediment on the seabed. INFOMAR provides key baseline data to support coastal and inshore development. Making this information available to the world aims to stimulate research and development of Ireland's 220 million acres under the sea. The data will be of interest to fisheries managers, aquaculture operators, coastal zone managers and engineers, offshore engineering interests, licensing authorities and those carrying out environmental impact assessments. Indeed this unique dataset is of interest in its own right because of the sheer volume of data collected

FURTHER READING/REFERENCES

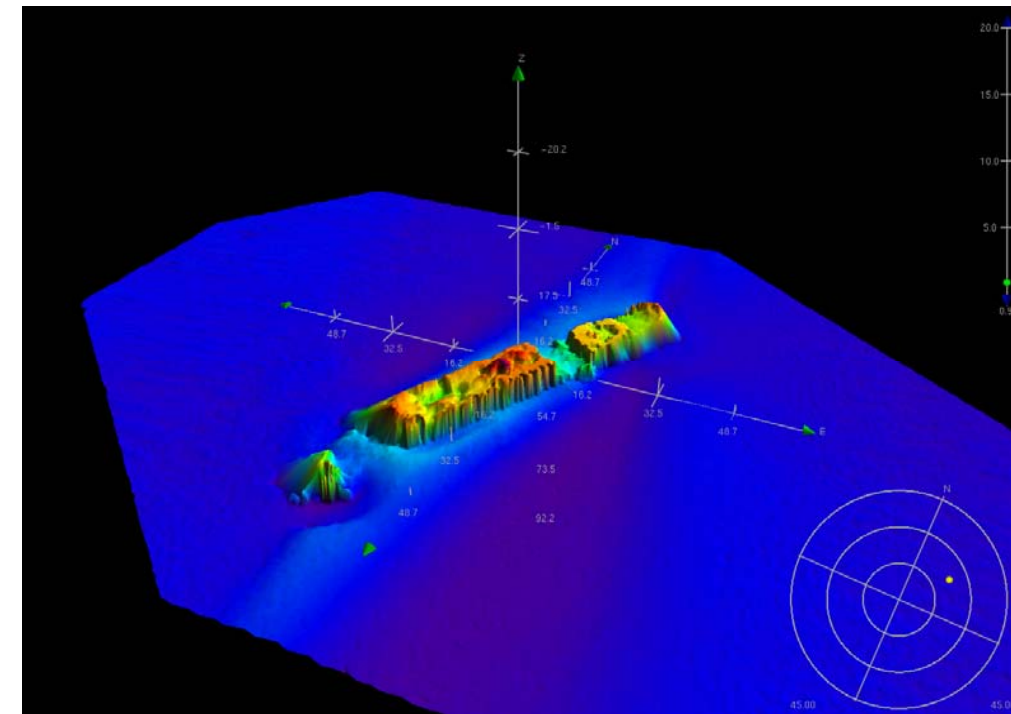
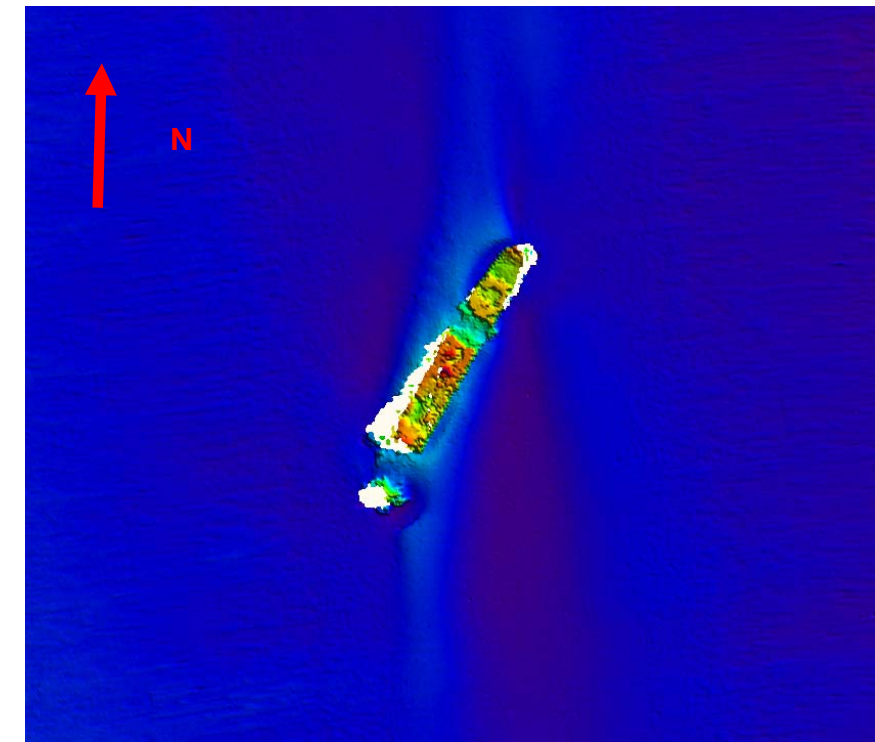
www.infomar.ie
www.irishwrecksonline.net
<http://www.archaeology.ie/en/ShipwreckDatabase/>

Brady, K. (comp.) 2008, *Shipwreck Inventory of Ireland: Louth, Meath, Dublin and Wicklow*. Dublin. The Stationery Office.

King, K., 1977, *The Sinking of the S.S. Polwell*. In Beam, The Journal of the Irish Lighthouse Service, Vol. 9, No. 2.

Larn, B. and Larn, R., 2002, *Shipwreck Index of Ireland*, Surrey, Lloyd's Register-Fairplay Ltd.

WRECK IMAGERY



Above: 3D and plan view images of the SS Polwell acquired using Caris Hips & Sips Software