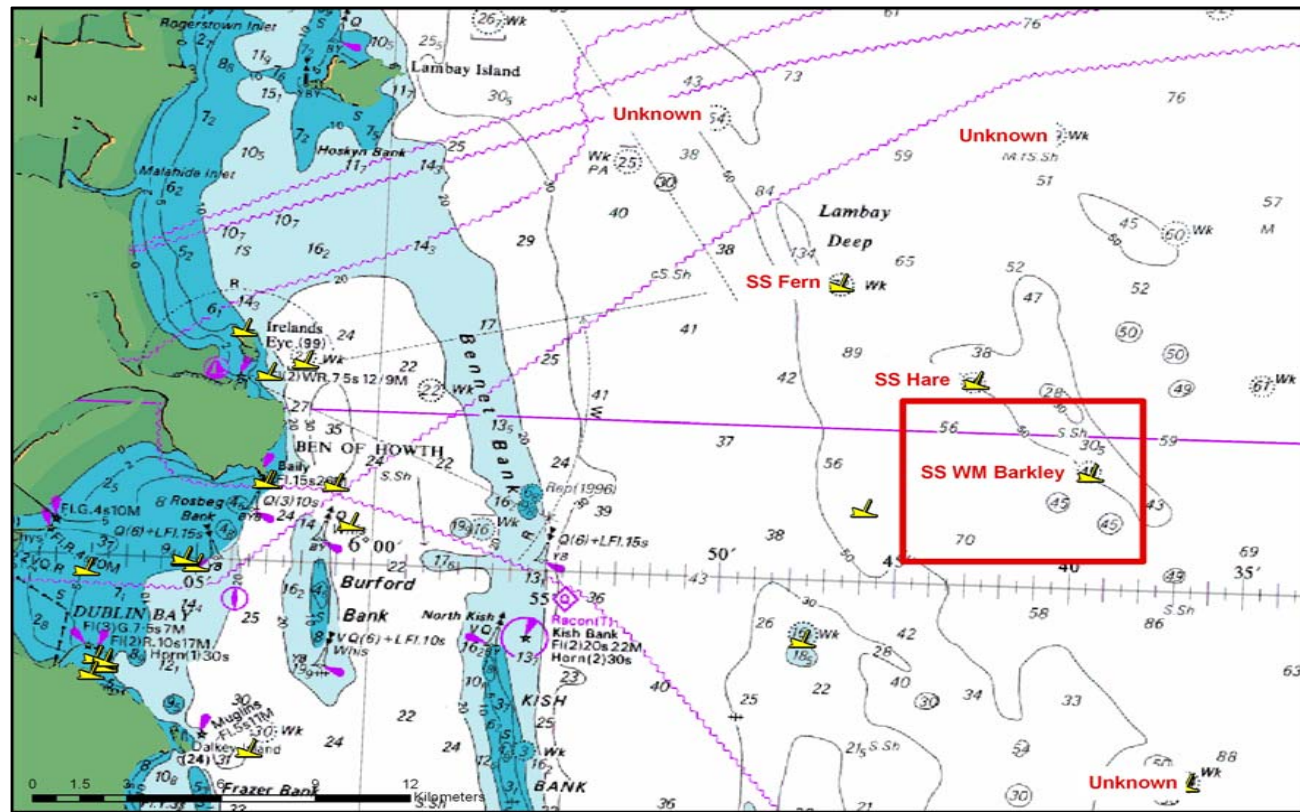
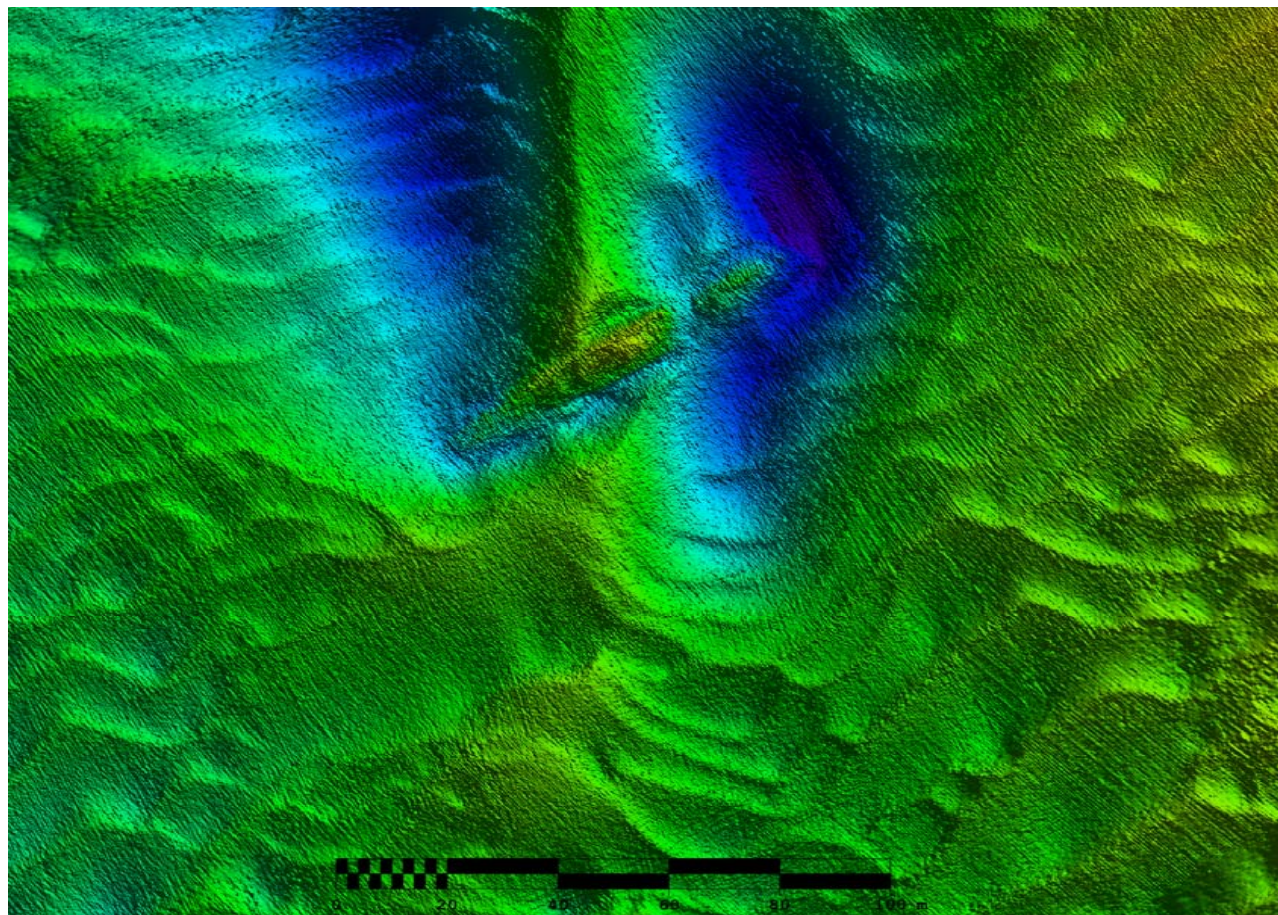


WRECK IMAGERY



Above the location of the SS *W.M. Barkley* off the east coast and below an image of the SS *W.M. Barkley* from the shaded relief acquired during the INFOMAR survey CV11_01, eastern priority area.



LOCATION

Location 26km E of Howth Head

Coordinates -05° 39' 32.04" W
53° 22' 17.76" N

Depth of Water 56 m

VESSEL INFORMATION

Vessel type Steam Cargo

Flag British

Vessel Dimensions 59 m (l),
11 m (b), 9m (d)

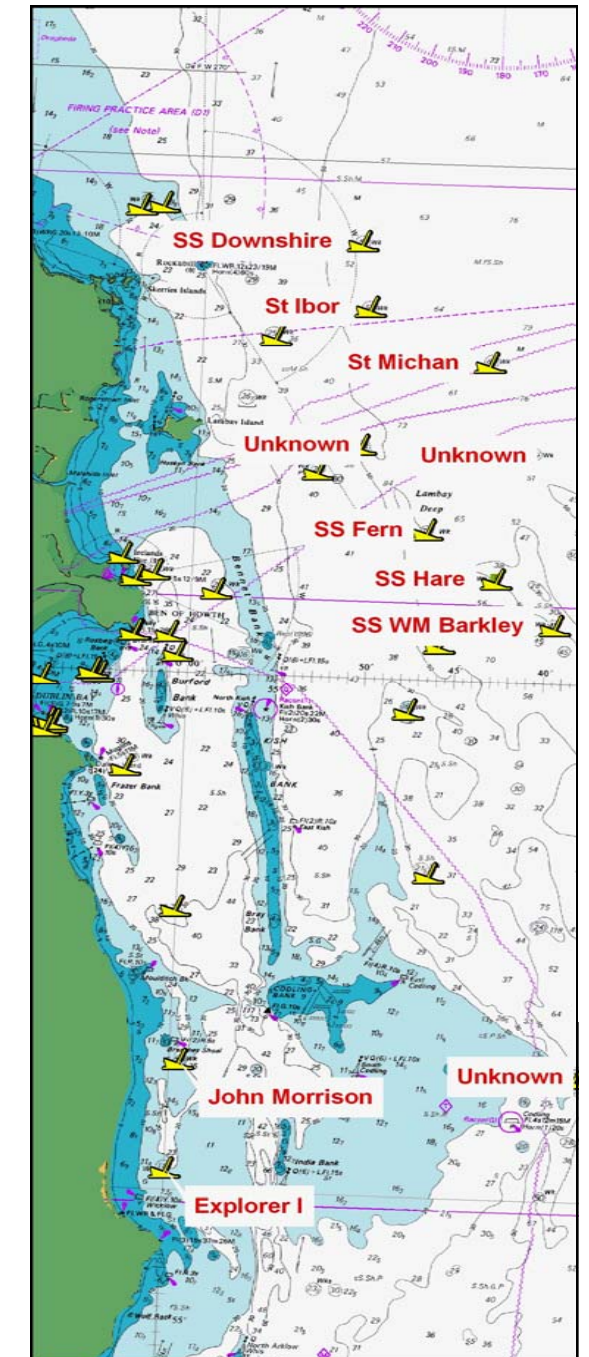
Date of building 1898

DETAILS OF SINKING

On the 12th October 1917, when 7 miles east from the Kish Light Vessel, the SS *W.M. Barkley* was torpedoed without warning and sunk by German submarine UC-75. 4 lives were lost including the Master. The vessel was on route from Dublin to Liverpool carrying a cargo of stout.



SS *W.M. BARKLEY*



VESSEL HISTORY

The SS *W.M. Barkley* was built in 1898 by Ailsa Shipbuilding Company in Troon, Scotland. The SS *W.M. Barkley* was a defensively-armed British Merchant steamer and weighed 569grt. In December 1913, the Guinness Company purchased its first vessel, the SS *W.M. Barkley*, which at the time belonged to Belfast ship-owners John Kelly & Sons. When World War I began in 1914 the SS *W.M. Barkley* and other Guinness ships were commandeered by the British Admiralty and used to transport cargo, mainly to France. In 1917 the SS *W.M. Barkley* was returned to the Guinness Company due to the fact that she needed to stop for coal too often. On 12th October 1917, the SS *W.M. Barkley* was torpedoed and sank by U-75, 7 miles east of the Kish light vessel.

DIVE INFORMATION

The SS *W.M. Barkley* lies in a general sea depth of 56m and is orientated NE-SW and is largely intact.

Wrecks over 100 years old and archaeological objects found underwater are protected under the National Monuments (Amendment) Acts 1987 and 1994. As the SS *W.M. Barkley* is over 100 years old, it is protected and a license is required to dive the site which can be obtained from:

www.archaeology.ie/servlet/apply_licence.jsp

Under the legislation all diving on protected wreck sites or with the intention of searching for archaeological underwater material is subject to such licensing requirements.

ABOUT INFOMAR

Covering some 125,000 square kilometres of underwater territory, INFOMAR (the **IN**tegrated Mapping **FO**r the Sustainable Development of Ireland's **MAR**ine Resource) project will produce integrated mapping products covering the physical, chemical and biological features of the seabed. INFOMAR will initially focus on 26 priority bays and three priority areas around the coast delivering: hydrographic maps, illustrating everything from sandbars to underwater canyons and cliffs; seabed classification maps showing the type of sediment on the seabed. INFOMAR provides key baseline data to support coastal and inshore development. Making this information available to the world aims to stimulate research and development of Ireland's 220 million acres under the sea. The data will be of interest to fisheries managers, aquaculture operators, coastal zone managers and engineers, offshore engineering interests, licensing authorities and those carrying out environmental impact assessments. Indeed this unique dataset is of interest in its own right because of the sheer volume of data collected

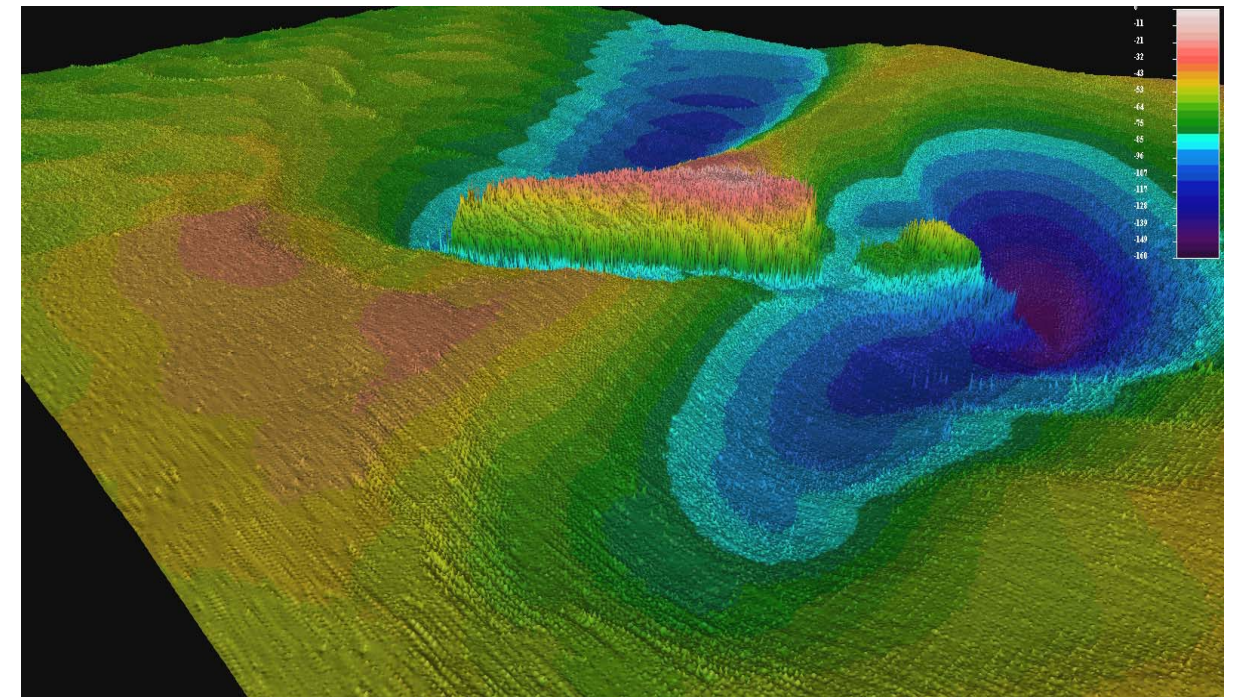
FURTHER READING/REFERENCES

www.infomar.ie

www.irishwrecksonline.net

[http://www.archaeology.ie/en/Shipwreck Database/](http://www.archaeology.ie/en/ShipwreckDatabase/)

WRECK IMAGERY



Above a 3D image of the SS *W.M. Barkley* using Caris Hips & Sips multibeam processing software and below a model of the SS *W.M. Barkley* which is housed in the Guinness Storehouse, Dublin.

