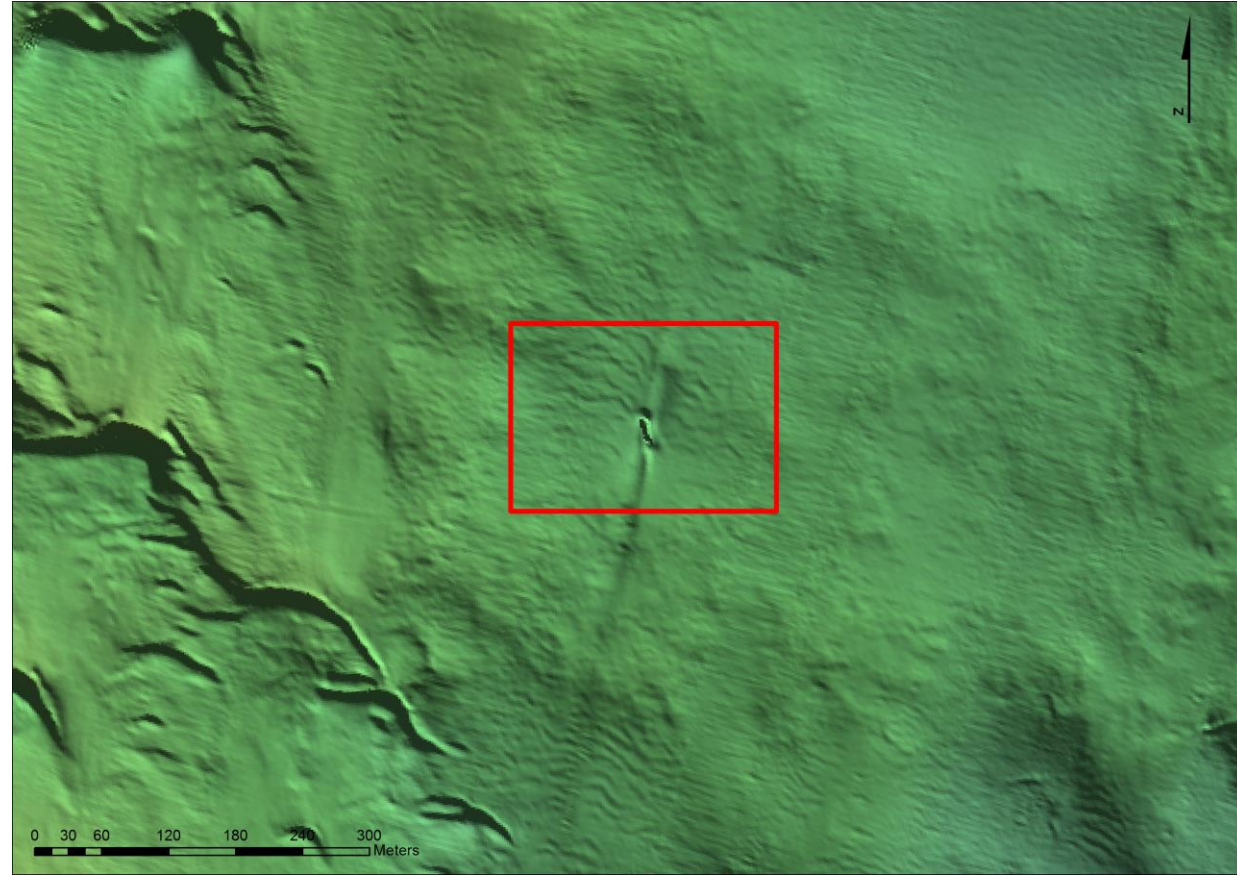
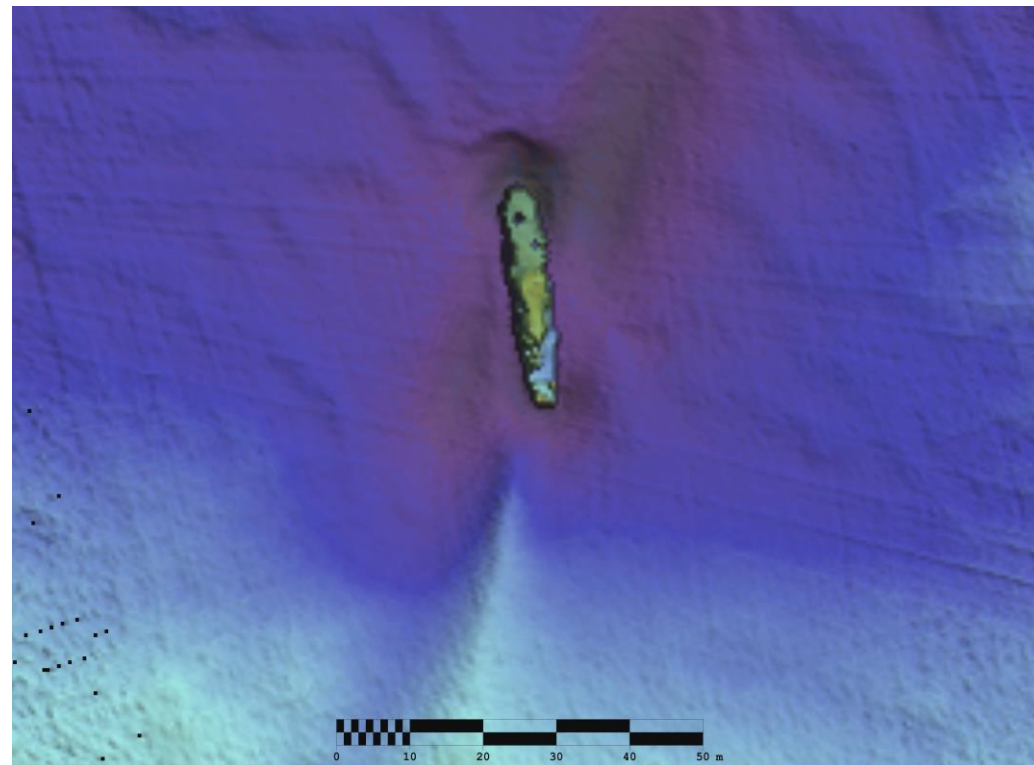


## WRECK IMAGERY



Above the location of the South Arklow Lightvessel *Guillemot* from shaded relief imagery acquired during Infomar survey CV12\_01 Irish Sea area and below an image of the S. Arklow Lightvessel *Guillemot* at 50cm resolution.



## LOCATION

**Location** 18km SE of Arklow

**Coordinates** -05° 57' 33.17" W  
52° 40' 16.02" N

**Depth of Water** 45.6 m

## VESSEL INFORMATION

**Vessel type** Lightship

**Flag** Irish

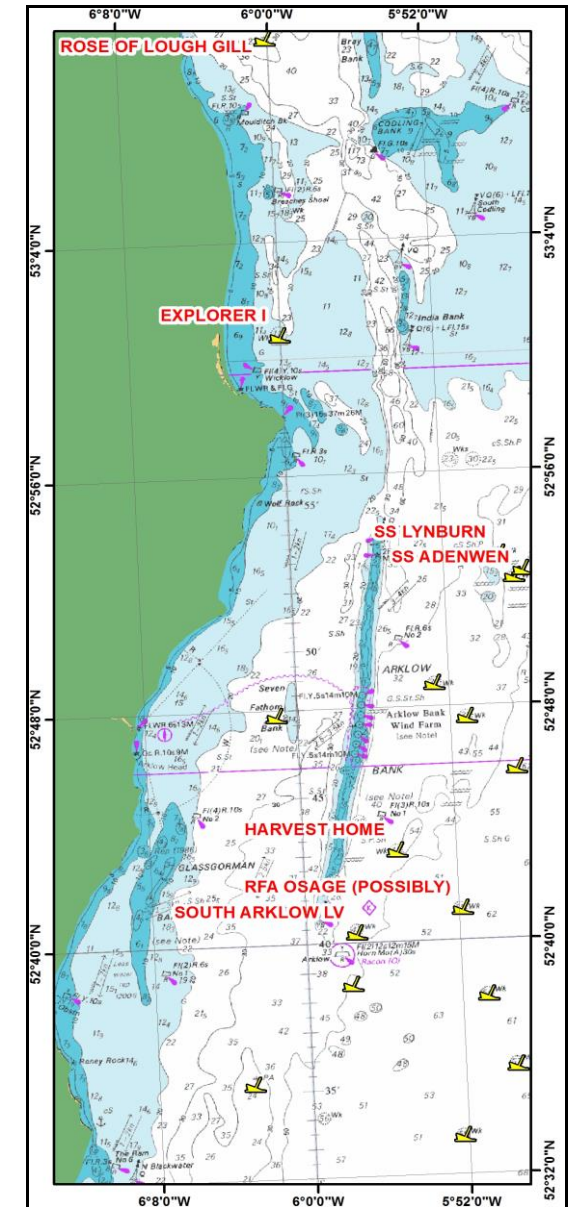
**Vessel Dimensions** 29 m (l), 6.7 m (b),  
3.6 m (d)

**Date of building** 1893

## DETAILS OF SINKING

On 28<sup>th</sup> March 1917 the South Arklow Lightvessel *Guillemot* was boarded by the crew of *UC-65*. After no secret material was found the crew of the *Guillemot* were ordered to leave the vessel and charges were placed in its hull. The *Guillemot* failed to sink and was subsequently fired on by the submarine and sunk by gunfire. There were no casualties. This was one of only two lightvessels deliberately sunk by U-boats during the World Wars. The sinking of the *Guillemot* occurred as it was warning passing ships of the presence of *UC-65*, which had already sunk 10 ships that day.

## SOUTH ARKLOW LV *GUILLEMOT*



## INFOMAR WRECK INFORMATION SHEET 27

## VESSEL HISTORY

The South Arklow Lightvessel *Guillemot* was built by William Allsup and Sons Ltd. in 1893 in Preston for the Commissioners of Irish Lights. She was built to the design and under the direction of Captain A.K. Galwey, Inspector of Lights, and Mr George Idle, Naval Architect. The *Guillemot* had a complete steel hull, riveted and caulked, and sheathed with teak planking from keel to gunwale. The teak was covered with felt and plates of muntz metal to prevent fouling of the bottom when at sea, and the bottom of the vessel inside was covered with Portland cement. The main deck was covered with steel, with Danzig fir on top.

## DIVE INFORMATION

The South Arklow Lightvessel *Guillemot* lies almost intact and upright in an N-S direction with a slight scour surrounding it in a general depth of 51.5 m.

Wrecks over 100 years old and archaeological objects found underwater are protected under the National Monuments (Amendment) Acts 1987 and 1994. As the South Arklow Lightvessel *Guillemot* is over 100 years old, it is protected and a license is required to dive the site which can be obtained from:

<https://www.archaeology.ie/licences/dive-survey-licence>

## ABOUT INFOMAR

Covering some 125,000 square kilometres of underwater territory, INFOMAR (the **IN**tegrated Mapping **FO**r the Sustainable Development of Ireland's **MAR**ine Resource) project will produce integrated mapping products covering the physical, chemical and biological features of the seabed. INFOMAR will initially focus on 26 priority bays and three priority areas around the coast delivering: hydrographic maps, illustrating everything from sandbars to underwater canyons and cliffs; seabed classification maps showing the type of sediment on the seabed. INFOMAR provides key baseline data to support coastal and inshore development. Making this information available to the world aims to stimulate research and development of Ireland's 220 million acres under the sea. The data will be of interest to fisheries managers, aquaculture operators, coastal zone managers and engineers, offshore engineering interests, licensing authorities and those carrying out environmental impact assessments. Indeed this unique dataset is of interest in its own right because of the sheer volume of data collected

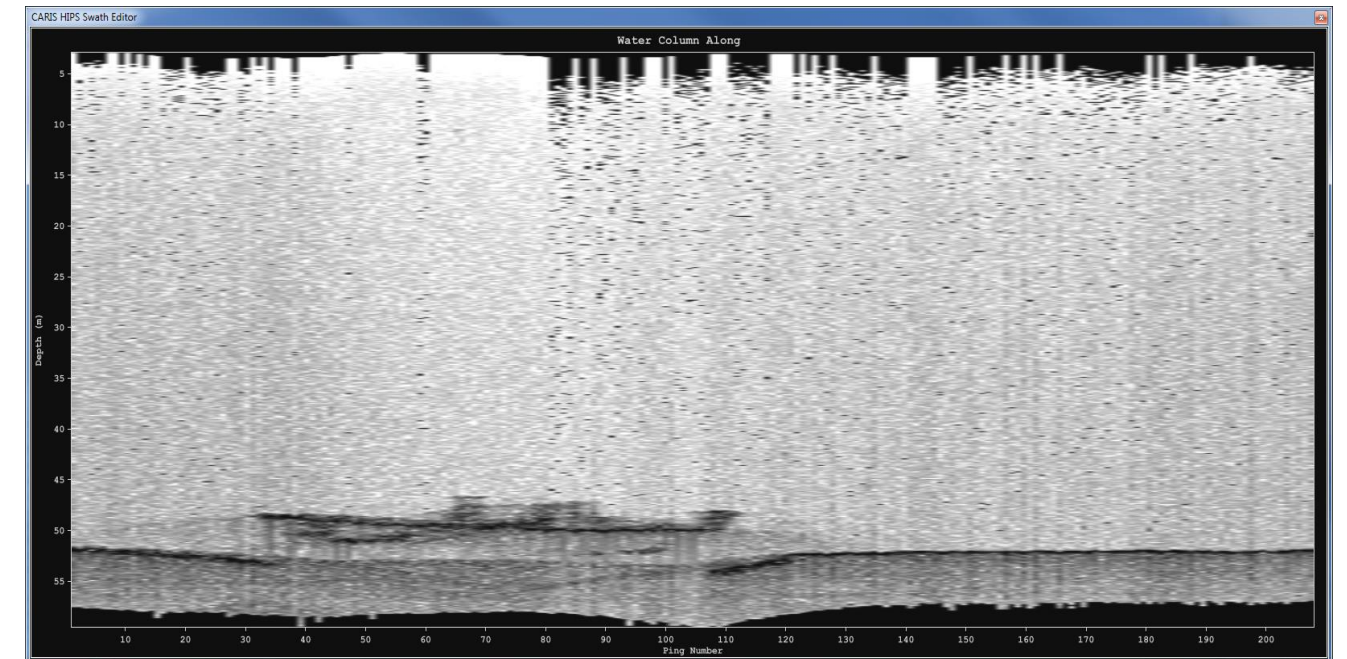
## FURTHER READING/REFERENCES

[www.infomar.ie](http://www.infomar.ie)

<https://www.archaeology.ie/underwater-archaeology>

[www.irishwrecksonline.net](http://www.irishwrecksonline.net)

## WRECK IMAGERY



Above an image of the water column data along track of the South Arklow Lightvessel *Guillemot* from Caris Hips and Sips software. Below (left) a 3D image of the South Arklow LV *Guillemot* captured using Fledermaus visualisation software and below (right) an artist's impression of the *Guillemot* (Image taken from *BEAM Vol. 35 2006/07*).

