



## **GEOLOGICAL SURVEY OF IRELAND**

***Request for Tender (RFT) for the provision of hydrographic services in connection with the seabed mapping of Ireland's offshore***

*Issued by : Geological Survey of Ireland, Beggars Bush, Haddington Rd., Dublin 4  
Ireland*

Issued Friday 23<sup>rd</sup> October 2009

**Closing date : Friday 4<sup>th</sup> December, 2009, 12.00pm (GMT)**

## *Contents*

**1 Introduction**

**2 Specification of Requirements**

**3 Additional Requirements**

**4 Evaluation of Tenders & Award Criteria**

**5 Notice to Companies Tendering**

*Appendix A:* Procedures for the award of public supply contracts.

*Appendix B:* Diagram of the survey locations within Ireland.

*Appendix C:* Form of Tender

## *Request for Tender*

### **1 INTRODUCTION**

#### **1.1 Background**

The Government of Ireland mandated the Geological Survey of Ireland (GSI), in conjunction with their strategic partner the Marine Institute (MI), to carry out and manage the Irish National Seabed Survey (INSS), between 1999 and 2005. The follow-on strategy to INSS, the Integrated Mapping for the Sustainable Development of Ireland's Marine Resource (INFOMAR) project, is a joint venture between GSI and the MI. The GSI is a line division, the Department of Communication, Marine and Natural Resources, and the MI an agency of, the Department of Agriculture, Fisheries & Food. The benefits of these projects are many and include the provision of information necessary for the sustainable management of marine based activities including:

- mineral, oil and gas exploration and exploitation,
- fishing, offshore aquaculture,
- shipping (e.g. marine safety),
- coastal zone management,
- coastal engineering and erosion,
- renewable energy development and
- the investigation of dumping at sea.

INSS and earlier surveys, mapped all water depths within the Irish Exclusive Economic Zone (EEZ) greater than 200m. In 2002 work commenced in water depths less than 200m. The INSS utilised a number of vessels for carrying out this work including the Marine Institute's RV Celtic Explorer. In addition the INSS has carried out LIDAR surveys over Clew Bay, Killala Bay and Mulroy Bay in association with local authorities and other interest groups. The INFOMAR project has carried out LIDAR survey over Bantry Bay, Dunmanus Bay and South Galway Bay during (all in 2006), Sligo Bay, Tralee Bay, Donegal Bay, Blacksod Bay, Galway Bay and Lough Foyle (all in 2008).

The priority locations for future data acquisition under the INFOMAR programme have been identified in consultation with a wide range of users and stakeholders. These mapping requirements are primarily located within the inshore zone and focus on 26 priority bays and 3 coastal areas, see figure 1 below.

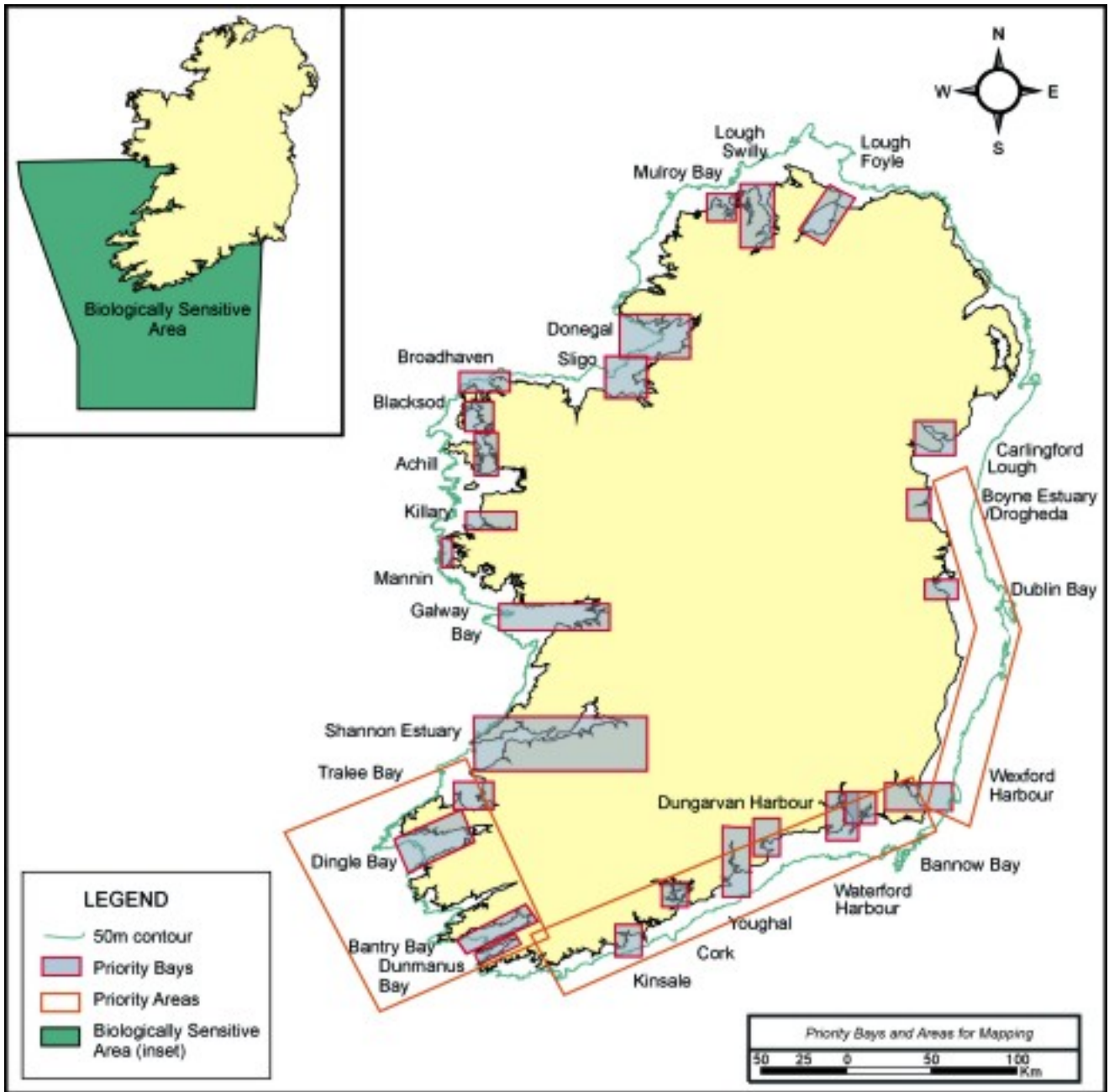


Figure 1. Map showing INFOMAR priority Bays and Areas for mapping.

## 1.2 Tender Outline

The GSI<sup>1</sup> invites tenders to supply the GSI with a Hydrographic Service to collect bathymetric data. The objective of the survey is to produce bathymetric data for Mannin Bay, Co Galway and Achill, Co. Mayo and Blacksod Bay, Co. Mayo and Lough Swilly, Co. Donegal, and Broadhaven Bay, Co Mayo, and Lower Lough Foyle, Co. Donegal and Shannon Estuary, Co. Limerick, and Inner Dingle Bay, Co. Kerry.

The tender is in eight lots:

- Lot A covering Mannin Bay, Co. Galway, Ireland;
- Lot B covering Achill, Co. Mayo, Ireland;
- Lot C covering Blacksod Bay, Co. Mayo, Ireland;
- Lot D covering Lough Swilly, Co. Donegal, Ireland;
- Lot E covering Lower Lough Foyle, Co. Donegal, Ireland;
- Lot F covering Shannon Estuary, Co. Limerick, Ireland;
- Lot G covering Inner Dingle Bay, Co. Kerry, Ireland;
- Lot H covering Broadhaven Bay, Co. Mayo, Ireland.

Tenderers are requested to submit a separate price for each of the above lots. This contract is subject to overall cost limitations. If necessary the GSI will enter into negotiations with the winning tenderer to agree on the number of lots that can be completed.

## 1.3 Technical Outline

The accuracy of the bathymetric data should be IHO Order 1 for position and depth. The coverage requirement is 5m x 5m laser spot spacing in the area with a line spacing of 100m, providing 200% coverage. The accuracy achieved should be documented in the Survey Report.

## 1.4 Deliverables

### *Required*

- Shoal bias xyz for the entire area. (Z value to the following three datums:- LAT, CD and Ellipsoid Height.
- Average depth xyz for the entire area.
- CARIS format for the entire cleaned dataset.
- Raw wave format<sup>2</sup> for investigation in seabed classification use.
- Charts at scales to be agreed in consultation with the GSI, showing
  - Contoured bathymetry (contour intervals to be agreed with the GSI).
  - Sun illumination from NE and NW 25° elevation.
- CAD format for charts (dxf format).
- Comprehensive operations report to include daily report on operations.
- Data processing and interpretative report.
- Hard Copy Fairsheets are to be produced to cover the Survey Area.

---

<sup>1</sup> In this document the term GSI refers to “the GSI, or its partners and agents as the GSI may specify”.

<sup>2</sup> GSI are interested in receiving both raw waveform data and any classification type map the contractor may produce.

## INFOMAR LIDAR RFT 2009\_01

- An overall chart (A1) of appropriate scale, e.g. 1:30,000. In addition GSI may require charts at a scale of possibly 1:15,000, to be agreed.
- A shaded relief geotiff image of the entire coverage area with and without a background reference chart.
- All ancillary data in raw data format, e.g. Tide, digital photography/video.

### *Desirable*

Backscatter maps (backscatter is used here as a relative term and the maps should be a representation of intensity of reflectivity of the Lidar).

A typical final deliverable will contain the following:

- A combined bay dataset in (i) Caris .caf import format (ii) Ungridded XYZ format file (iii) Gridded XYZ format file @ 5 – 6m gridding.
- A 1:15,000 scale set of coverage maps in (i) Caris .caf import format (ii) Ungridded XYZ format file (iii) Gridded XYZ format file @ 5 – 6m gridding. (iv) A contoured fairsheet map (v) sun-illuminated contoured maps from 2 different sun angles (2m bathy and 5m topo contours)
- A 1:30,000 scale set of coverage maps in (i) Caris .caf import format (ii) Ungridded XYZ format file (iii) Gridded XYZ format file @ 5 – 6m gridding. (iv) A contoured fairsheet map (v) sun-illuminated contoured maps from 2 different sun angles (10m bathy contours)
- An overall chart (A1) of appropriate scale, e.g. 1:30,000. Possibly depending on the size of the bay coverage an overall chart scale of 1:60,000 might be more appropriate (to be agreed with chosen tenderer), an individual overall chart is required for each lot at the appropriate scale to fit on A1.
- Fairsheets are required as the scale of the Bay dictates to derive large scale coverage. Each bay Lot may dictate a different scale of approach based on its size.
- Each bay will require its own fairsheet coverage.
- See example (Figure. 1) of a 1:30,000 fairsheet coverage of a previous Lidar survey from Mulroy Bay in Co Donegal .

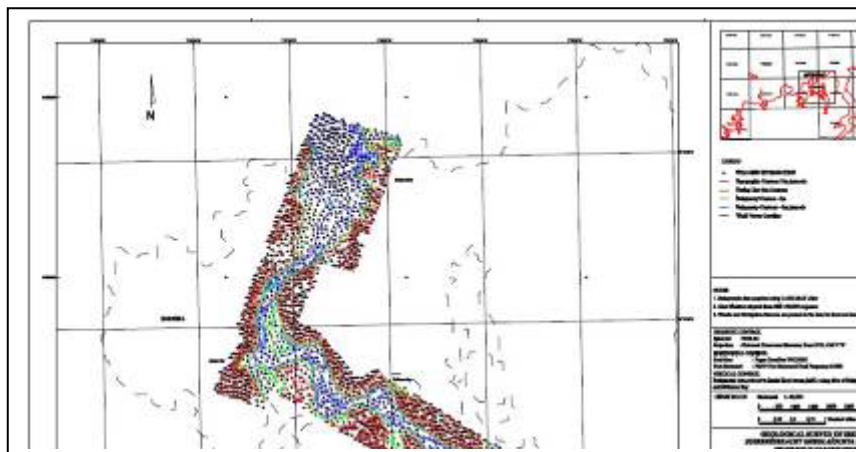


Figure 2. Map showing an example Fairsheet

### 1.5 Nature of Contract

While this request for tender is divided into 8 Lots, it is intended, without prejudice, to award a single contract.

## **1.6 Work Schedule**

The Tenderer should provide a work schedule and plans to complete the project to tender specification.

## **1.7 Quality Control**

The Tenderer should provide a listing of quality control procedures/arrangements that they will be implementing during the project.

## **1.8 Query Handling**

Any queries concerning this document should be addressed to:

Koen Verbruggen  
*Geological Survey of Ireland,  
Beggars Bush,  
Haddington Rd.,  
Dublin 4,  
Ireland*  
Telephone: +353-1-6782864  
Fax: +353-1-6782579  
Email: [Koen.Verbruggen@gsi.ie](mailto:Koen.Verbruggen@gsi.ie)

or

*Archie Donovan  
Geological Survey of Ireland  
Beggars Bush  
Haddington Rd.,  
Dublin 4,  
Ireland*  
Telephone: +353-1-6782798  
Fax: +353-1-6782579  
Email: [Archie.Donovan@gsi.ie](mailto:Archie.Donovan@gsi.ie)

## **1.9 Format of Tender**

Please respond to all the requirements in Section 1, and 3 on a point by point basis.

## **1.10 Closing Date**

**Friday 4<sup>th</sup> December, 2009 at 12.00 pm (GMT)**

## 2 SPECIFICATION OF REQUIREMENTS

### 2.1 Survey Areas

The survey areas should be agreed with the TENDERER prior to the survey but they are expected to be within the following co-ordinates:

Mannin Bay	Latitude	Longitude
1	53°26'00" N	010°10'00" W
2	53°32'00" N	010°10'00" W
3	53°32'00" N	010°00'00" W
4	53°26'00" N	010°00'00" W

Positions are assumed to be in WGS84 and covered by UKHO chart 2708. See figure 3 below.

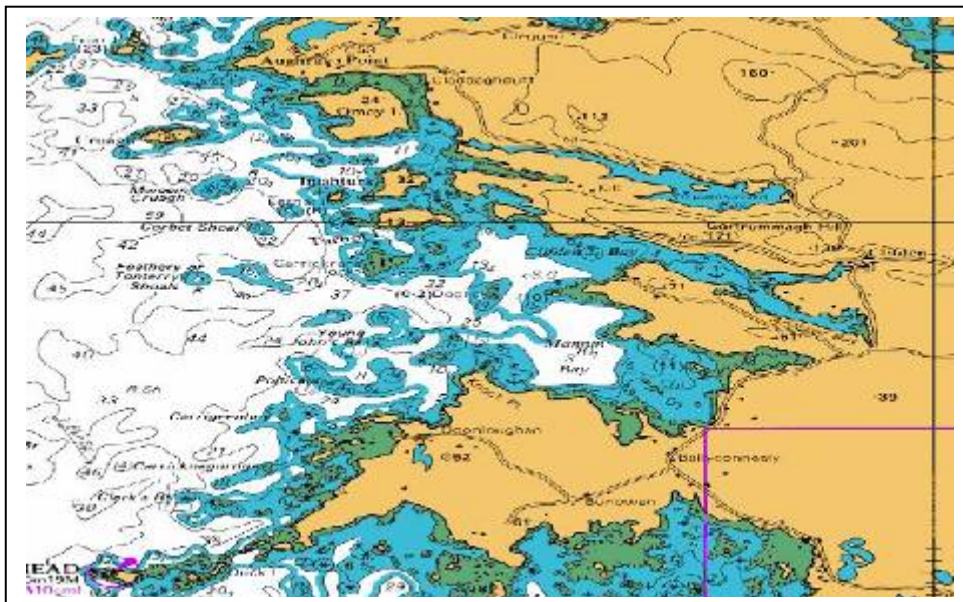


Figure 3. Map showing INFOMAR priority Mannin Bay for mapping.

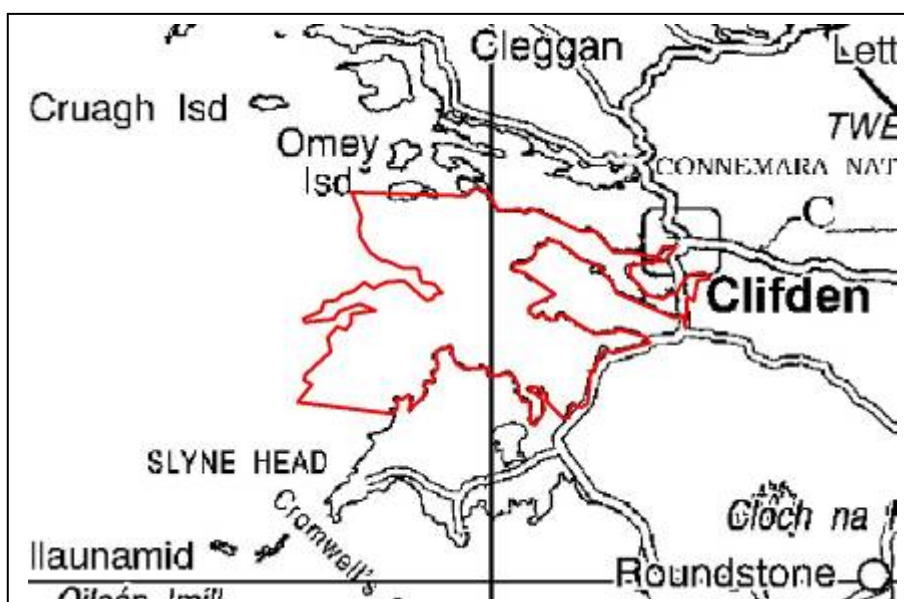


Figure 4. Map showing INFOMAR priority Mannin Bay for mapping. Red polygon areas in diagram denotes the proposed areas to be surveyed.

**INFOMAR LIDAR RFT 2009\_01**

Achill	Latitude	Longitude
1	53°50'00" N	010°00'00" W
2	54°03'30" N	010°00'00" W
3	54°03'30" N	009°46'00" W
4	53°50'00" N	009°46'00" W

Positions are assumed to be in WGS84 and covered by UKHO chart 2704. See figure 5 below.

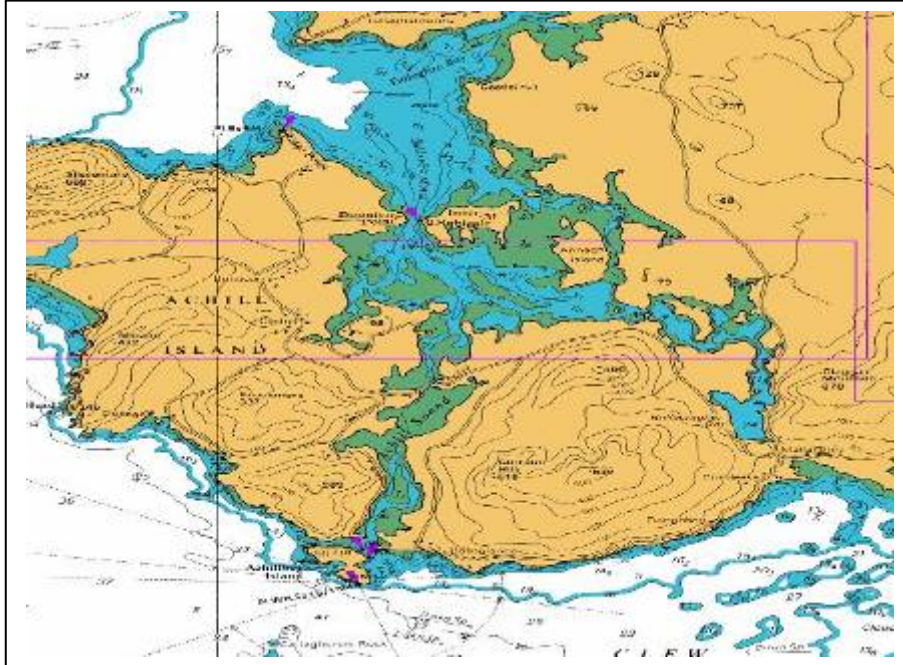


Figure 5. Map showing INFOMAR priority Achill for mapping.

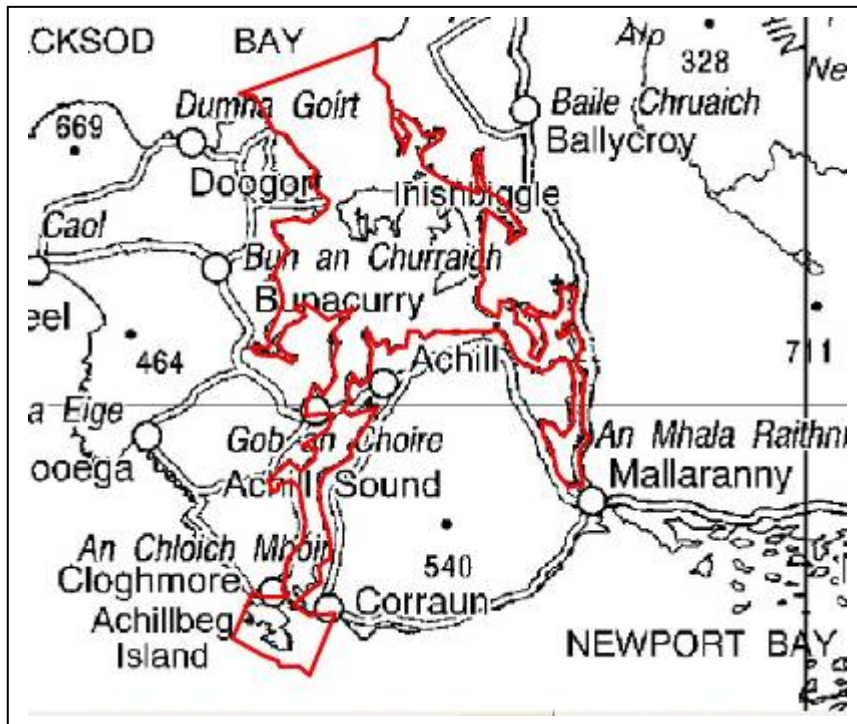


Figure 6. Map showing INFOMAR priority Achill for mapping. Red polygon area in diagram denotes the proposed area to be surveyed.

# INFOMAR LIDAR RFT 2009\_01

Blacksod Bay	Latitude	Longitude
1	54°03'30" N	010°06'00" W
2	54°13'00" N	010°06'00" W
3	54°13'00" N	009°49'00" W
4	54°03'30" N	009°49'00" W

Positions are assumed to be in WGS84 and covered by UKHO chart 2704. See figure 7 below.

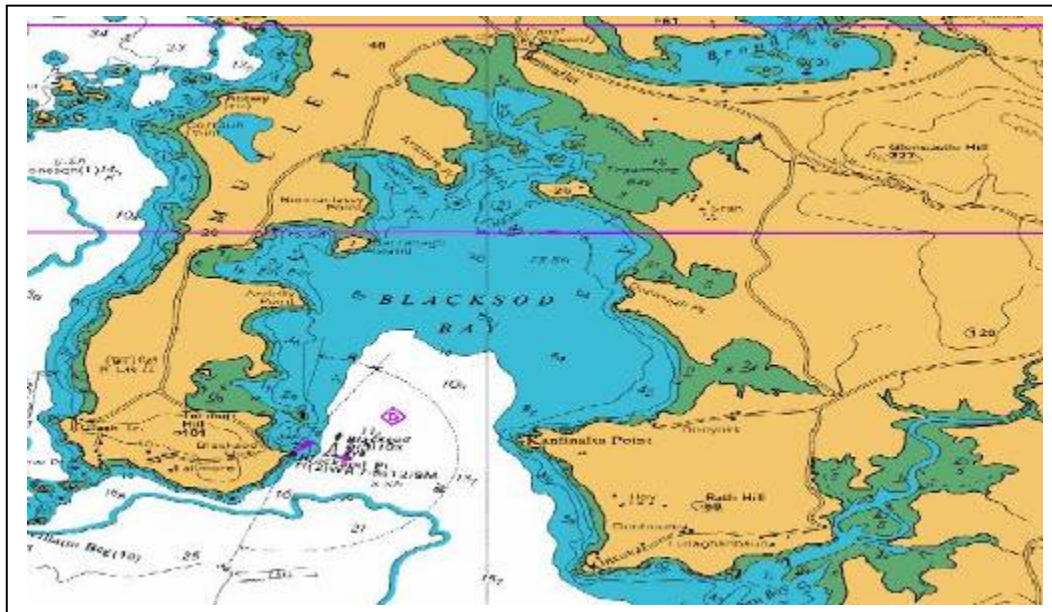


Figure 7. Map showing INFOMAR priority Blacksod Bay for mapping.

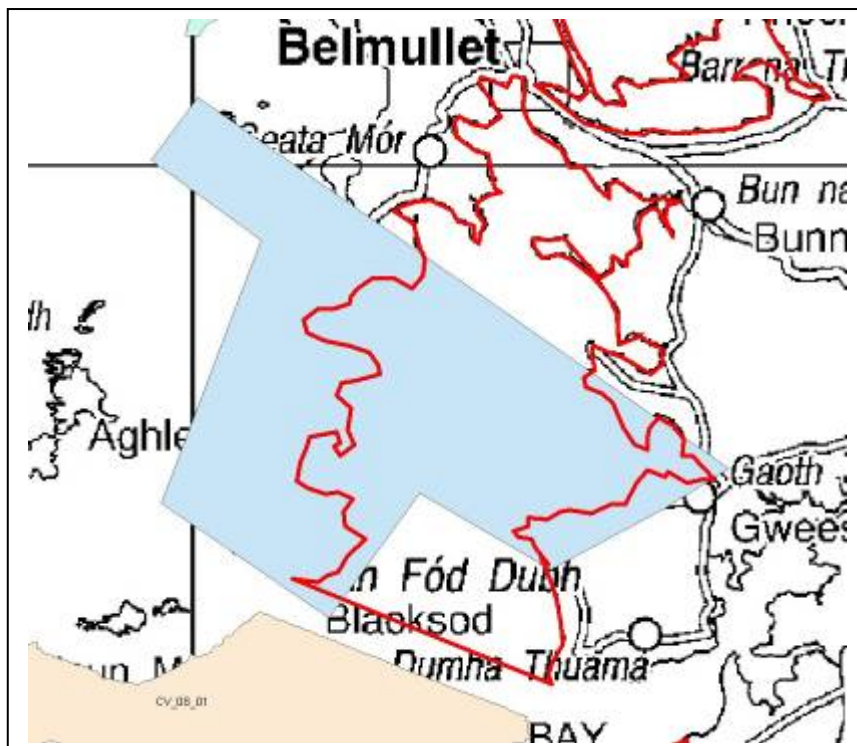


Figure 8. Map showing INFOMAR priority Blacksod Bay for mapping. Blue shaded area in diagram denotes the coverage of the existing 2008 Lidar survey in that area and the CV08\_01 coverage is shown below it

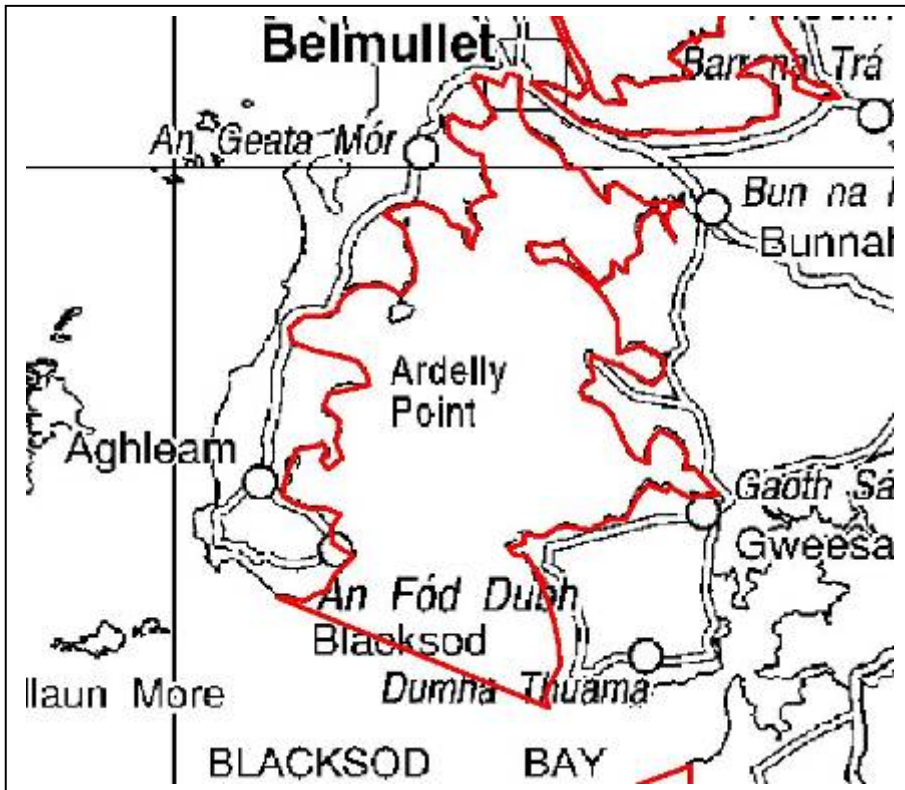


Figure 9. Map showing INFOMAR priority Blacksod Bay for mapping. Red polygon area in diagram denotes the proposed area to be surveyed.

Lough Swilly	Latitude	Longitude
1	54°57'00" N	007°43'00" W
2	55°18'00" N	007°43'00" W
3	55°18'00" N	007°27'00" W
4	54°57'00" N	007°27'00" W

Positions are assumed to be in WGS84 and covered by UKHO chart 2697. See figure 10 below.

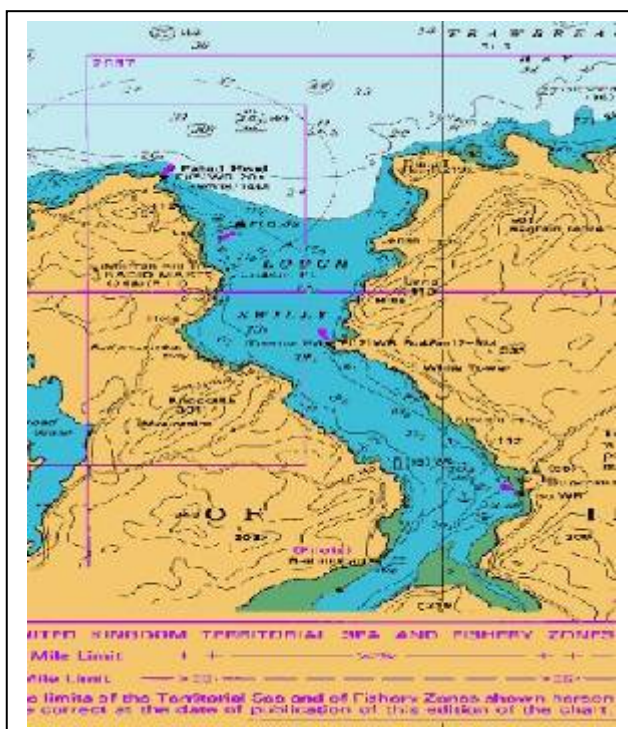


Figure 10. Map showing INFOMAR priority Lough Swilly for mapping.

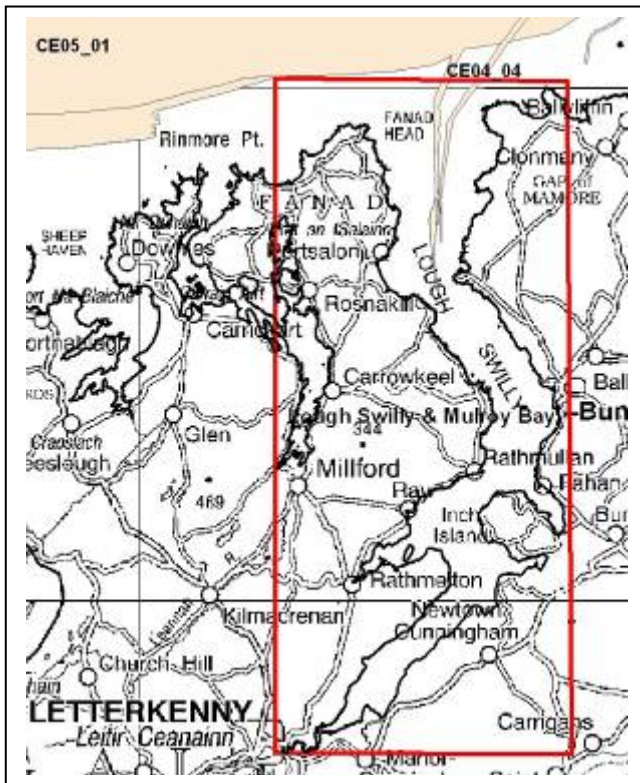


Figure 11. Map showing INFOMAR priority Lough Swilly for mapping. Shaded area in diagram denotes the coverage of the existing surveys in that area.

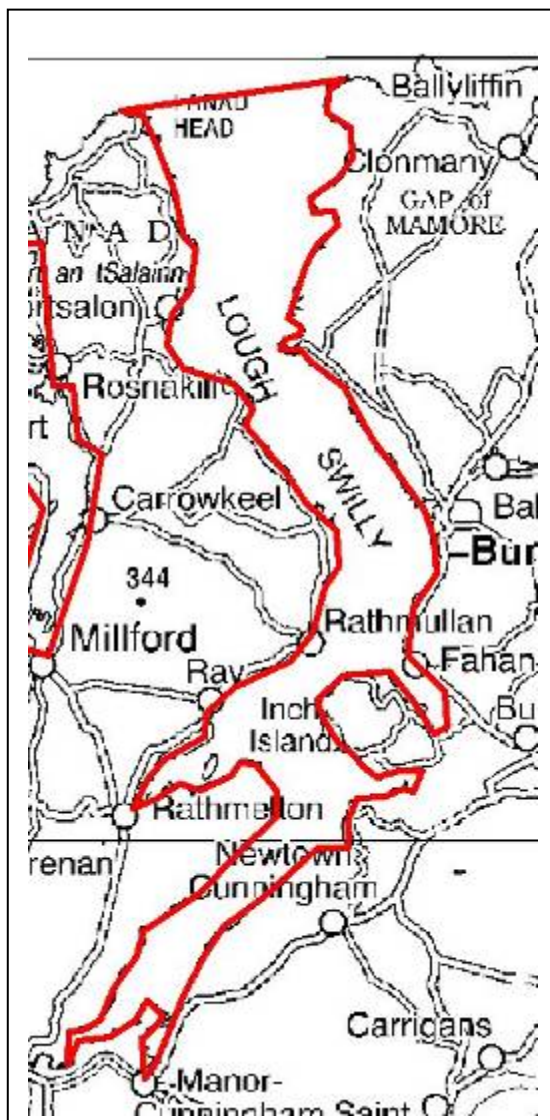


Figure 12. Map showing INFOMAR priority Lough Swilly for mapping. Red polygon area in diagram denotes the proposed area to be surveyed.

**INFOMAR LIDAR RFT 2009\_01**

Lower Lough Foyle	Latitude	Longitude
1	54°55'00" N	007°14'30" W
2	55°02'00" N	007°22'30" W
3	55°17'00" N	006°55'00" W
4	55°11'30" N	006°46'00" W

Positions are assumed to be in WGS84 and covered by UKHO chart 2499. See figure 13 above.

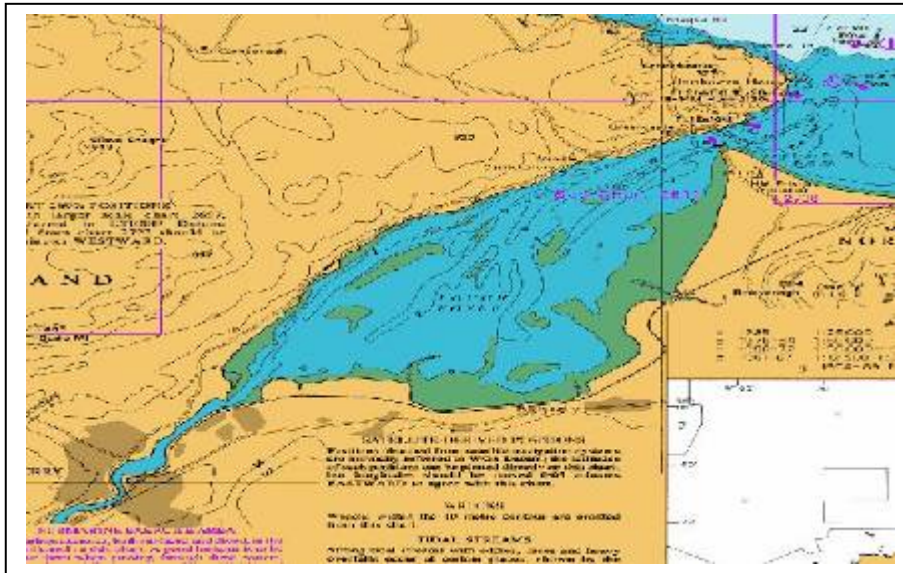


Figure 13. Map showing INFOMAR priority Lower Lough Foyle for mapping.

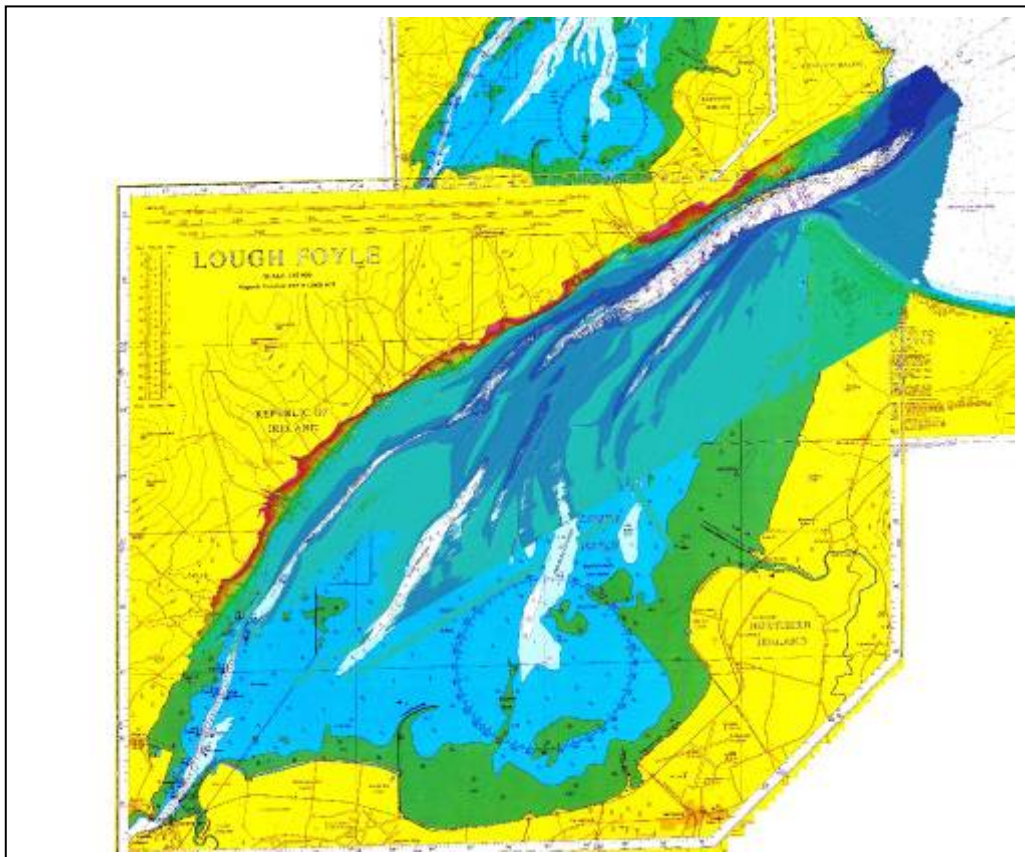


Figure 14. Map showing INFOMAR priority Lower Lough Foyle for mapping. Lidar image overlay in the diagram denotes the coverage of the existing 2008 Lidar survey in that area.

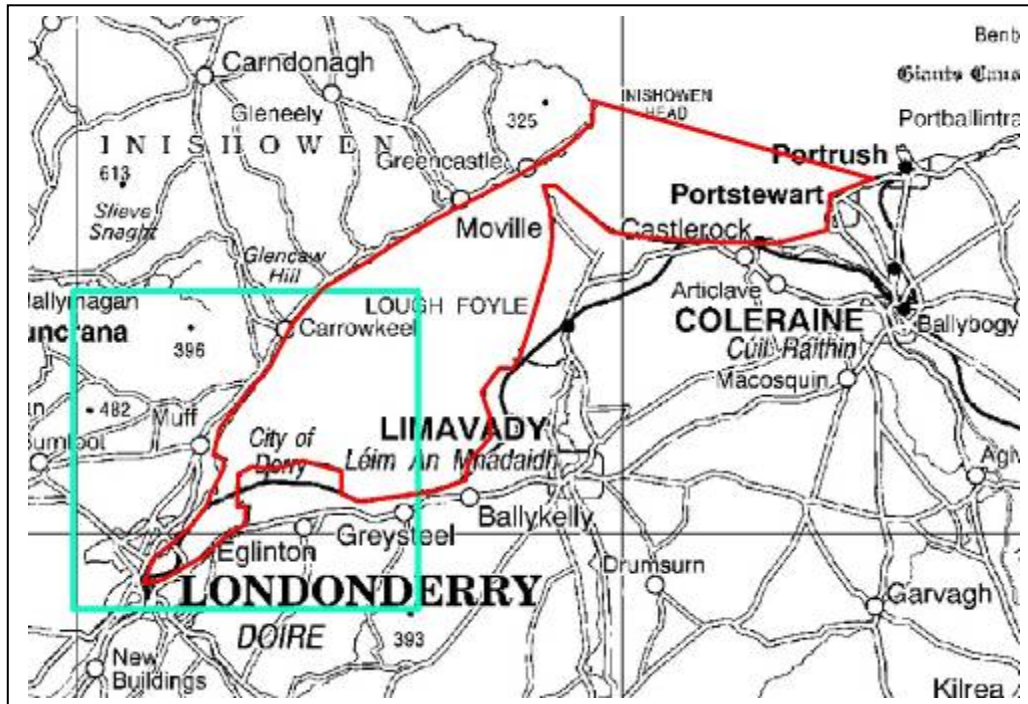


Figure 15. Map showing INFOMAR priority Lower Lough Foyle for mapping. Green polygon area in diagram denotes the proposed area to be surveyed.

Shannon Estuary	Latitude	Longitude
1	52°26'00" N	009°55'00" W
2	52°42'30" N	009°55'00" W
3	52°42'30" N	009°05'00" W
4	52°50'00" N	009°05'00" W
5	52°50'00" N	008°54'00" W
6	52°42'30" N	008°35'00" W
7	52°26'30" N	008°35'00" W

Positions are assumed to be in WGS84 and covered by UKHO charts 1819, 1547, 1548, 1549, 1540, 2254. See figure 16 above.

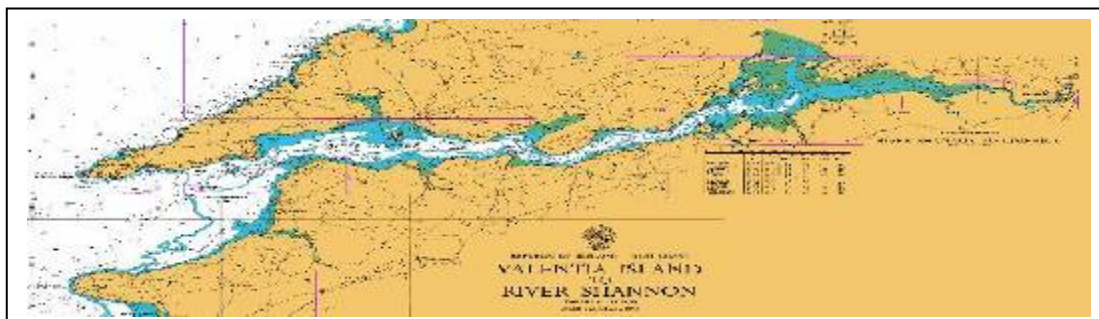


Figure 16. Map showing INFOMAR priority Shannon Estuary for mapping.



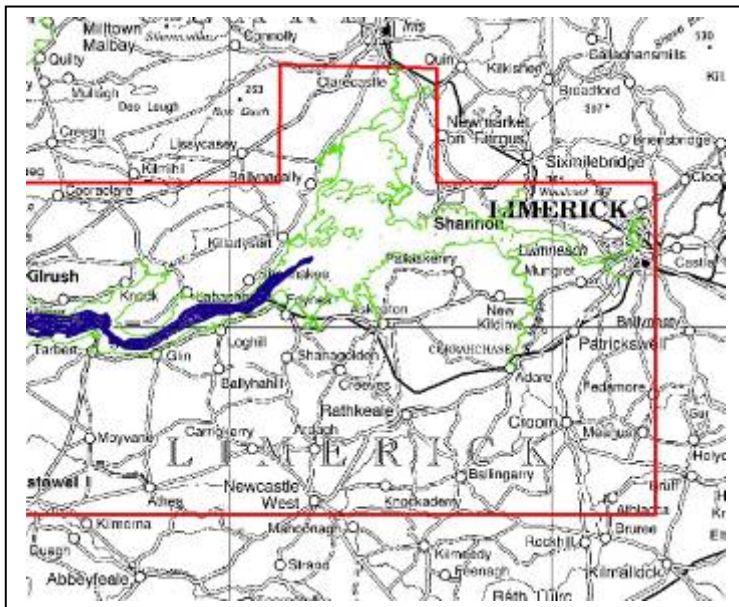


Figure 20. Map showing INFOMAR priority **EAST** Shannon Estuary for mapping. Blue linework in diagram denotes the tracklines of the existing CV09\_01 survey in that area.

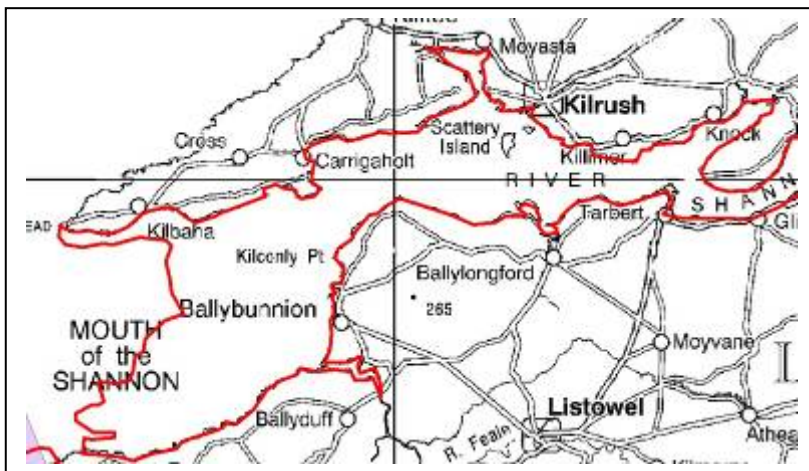


Figure 21. Map showing INFOMAR priority **WEST** Shannon Estuary for mapping. Red polygon area in diagram denotes the proposed area to be surveyed.

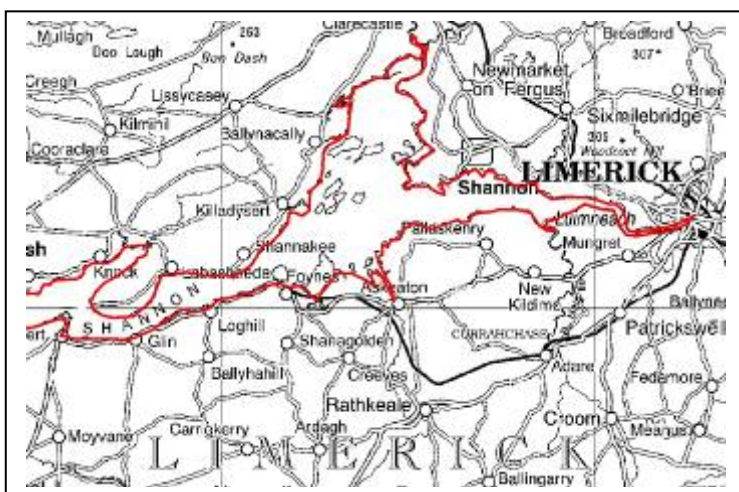


Figure 22. Map showing INFOMAR priority **EAST** Shannon Estuary for mapping. Red polygon area in diagram denotes the proposed area to be surveyed.

# INFOMAR LIDAR RFT 2009\_01

Inner Dingle Bay	Latitude	Longitude
1	52°02'30" N	010°00'00" W
2	52°10'30" N	010°00'00" W
3	52°10'30" N	009°38'00" W
4	52°02'30" N	009°38'00" W

Positions are assumed to be in WGS84 and covered by UKHO chart 2789. See figure 23 above.

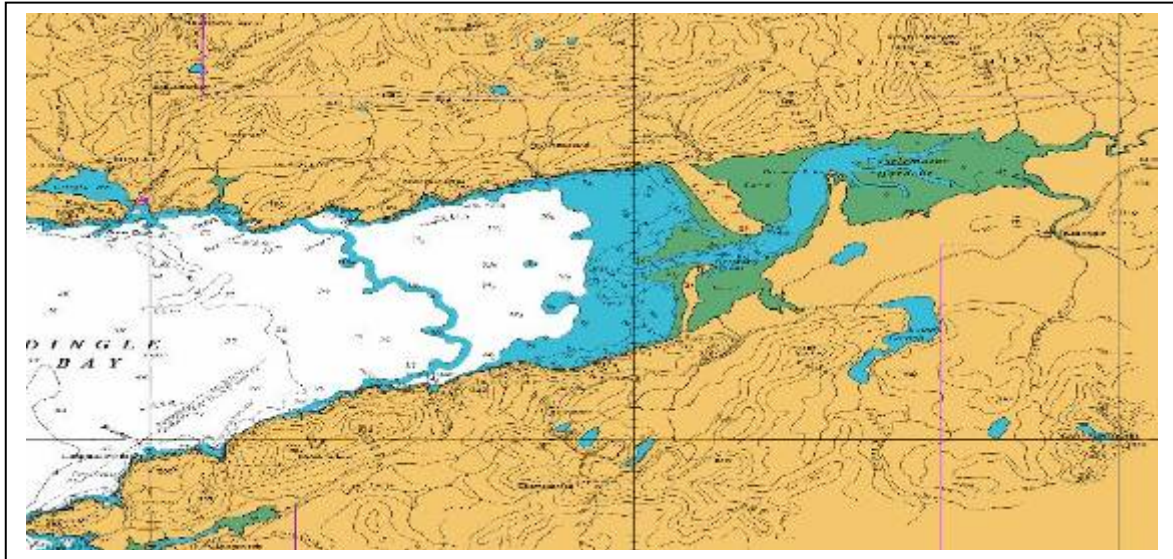


Figure 23. Map showing INFOMAR priority Inner Dingle Bay for mapping.

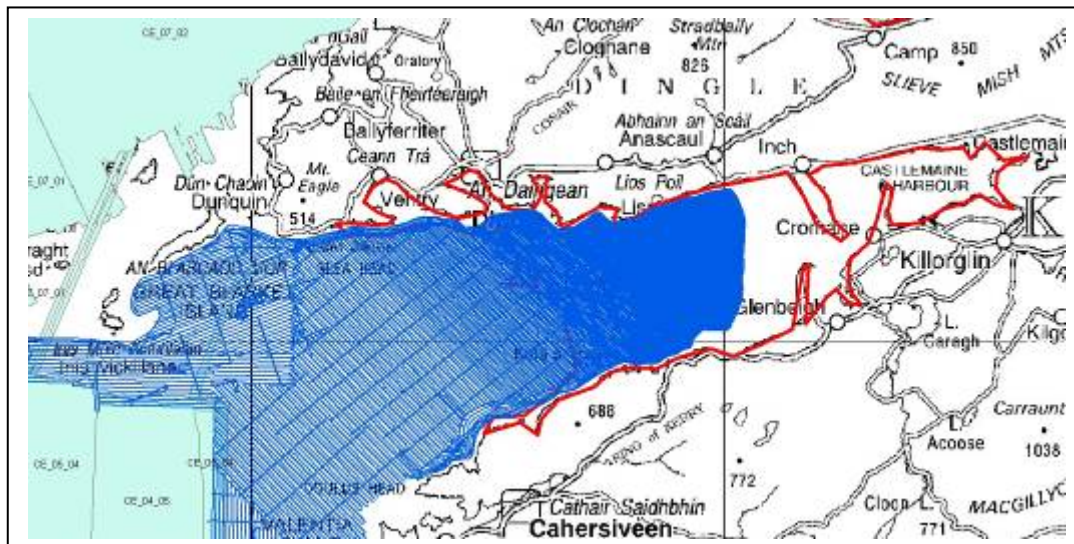


Figure 24. Map showing INFOMAR priority Inner Dingle Bay for mapping. Blue linework in diagram denotes the tracklines of the existing CV09\_02 survey in that area.

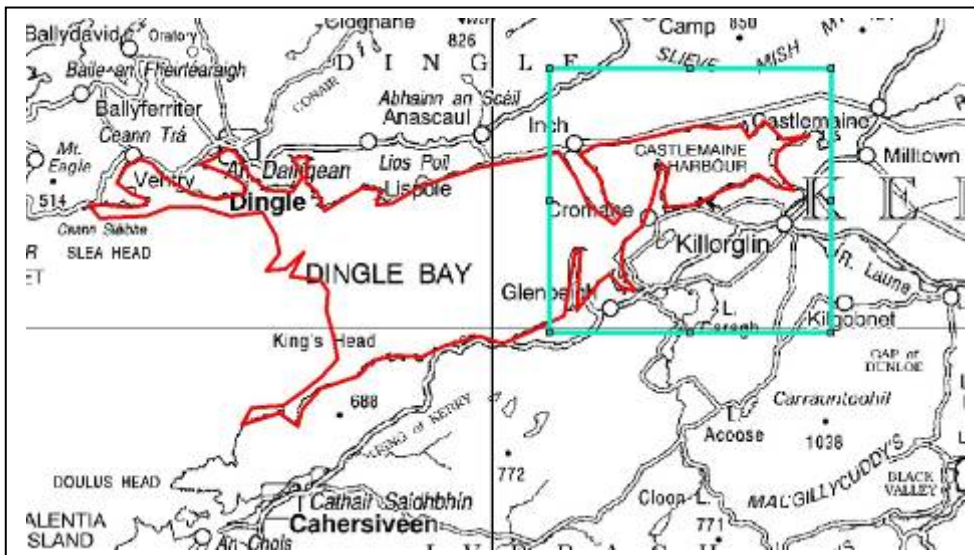


Figure 25. Map showing INFOMAR priority Inner Dingle Bay for mapping. Green polygon area in diagram denotes the proposed area to be surveyed.

Broadhaven Bay	Latitude	Longitude
1	54°13'00" N	010°09'00" W
2	54°21'00" N	010°09'00" W
3	54°21'00" N	009°41'00" W
4	54°13'00" N	009°41'00" W

Positions are assumed to be in WGS84 and covered by UKHO chart 2703. See figure 26 below.

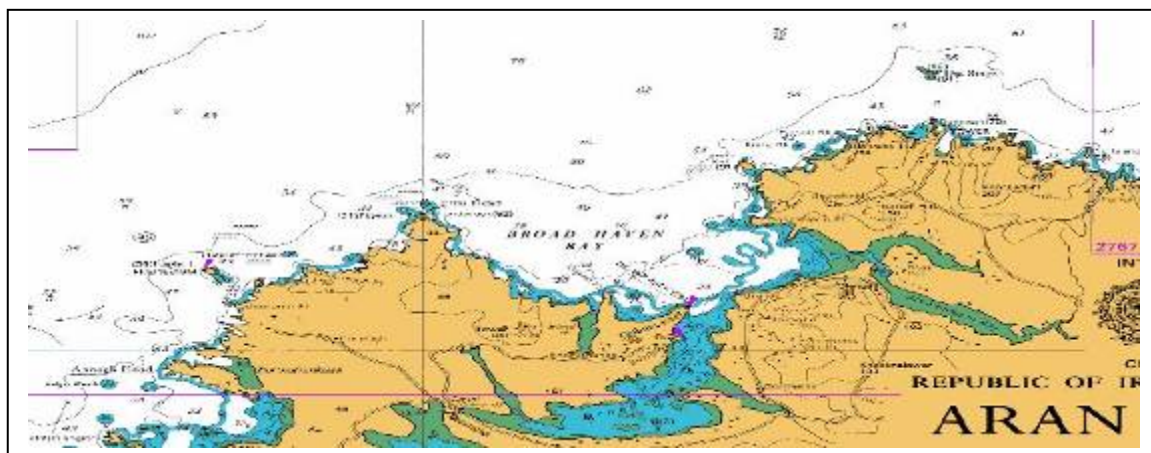


Figure 26. Map showing INFOMAR priority Broadhaven Bay for mapping.

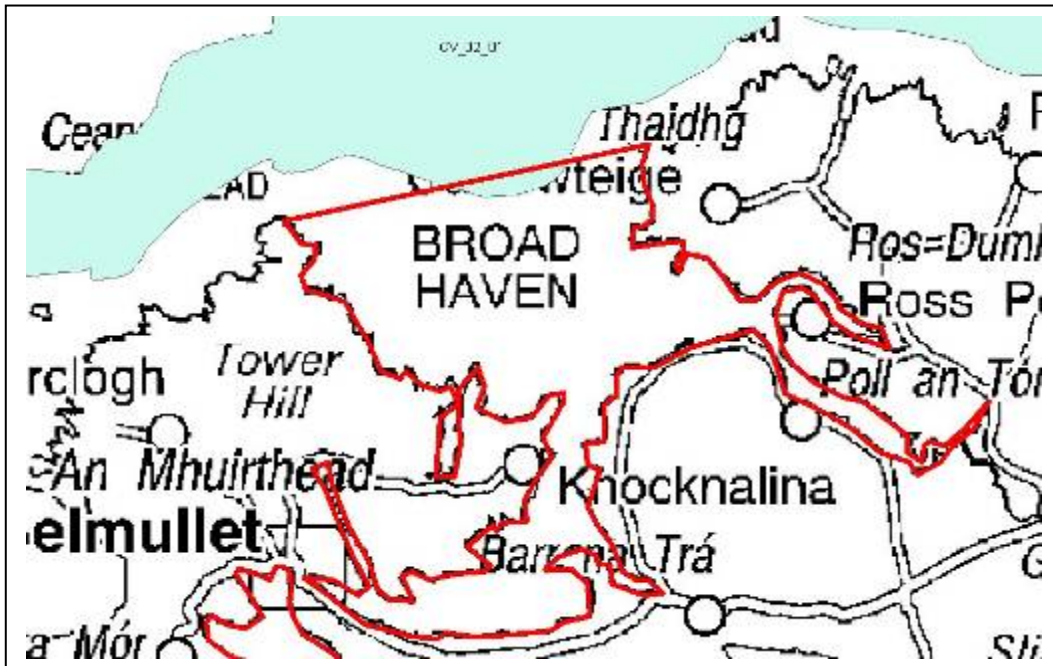


Figure 27. Map showing INFOMAR priority Broadhaven Bay for mapping. Green shaded area in diagram denotes the tracklines of the existing CV02\_01 survey in that area.

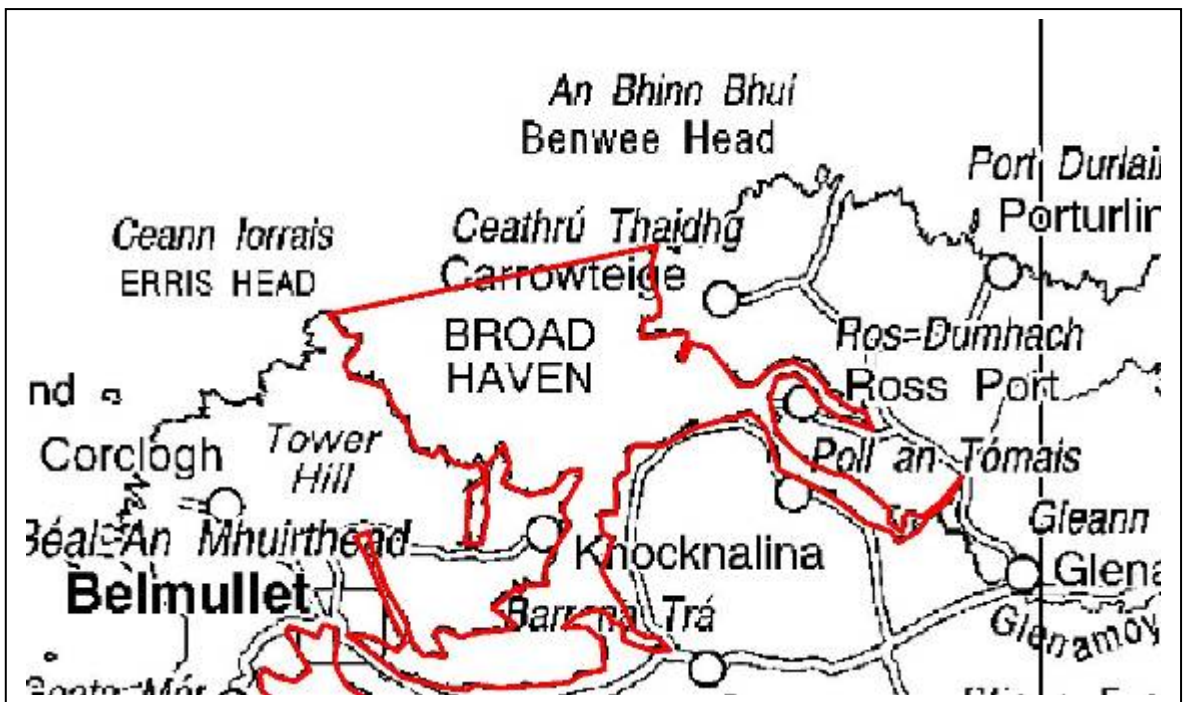


Figure 28. Map showing INFOMAR priority Broadhaven Bay for mapping. Red polygon area in diagram denotes the proposed area to be surveyed.

## **2.2 Survey Operations**

The following procedures should be demonstrated during the survey.

### **2.2.1 Commencement of Survey**

GSI expects the Deployment and Data Collection activities to take place during March 2010 or April 2010 (based on Irish experience of optimum conditions for Lidar acquisition). Interim<sup>3</sup> data should be delivered to GSI as soon as possible after flying operations , but not later than July 2010.

The TENDERER should acknowledge that interim data be provided to GSI at the earliest possible date.

### **2.2.2 Survey Planning**

The TENDERER's survey operating site should be available for inspection by the EMPLOYER from time to time to give visibility to the data collection, processing and validation process.

A static position check should be conducted to check the positioning systems before use.

Survey operations should be programmed on a daily basis. As operating times can be influenced by local aircraft schedules and topography, the TENDERER should make allowance for air traffic, and the necessary aircraft fuel reserves for the weather conditions and topographic conditions in the survey area.

Automatic data processing and backup should commence immediately following data collection. The following morning the previous day's data should be available for review. Over the following days, interactive data validation, checking and review should be conducted. Data processing should be initially conducted using a predicted tidal model, observed tides should be reapplied when received.

### **2.2.3 Survey Conduct**

The survey should be coordinated in the field by TENDERER's field party leader accredited to IHO Category A. During each sortie the survey team should consist of 2 pilots and 1 or 2 operators. The Project Manager, or his delegate, may also fly. In addition, a representative of the GSI may also witness each flight.

### **2.2.4 Data Collection**

#### *2.2.4.1 Main Line Sounding*

The Survey Area should be covered by main lines of sounding. These lines should be flown at 100 metre spacing.

---

<sup>3</sup> The initial first pass XYZ data and initial first pass sun illuminated map showing coverage achieved on an appropriate scale background map of each of the bays flown using a predicted tidal model.

### 2.2.4.2 *Cross Lines*

Cross Lines sufficient to validate the data should be flown in each area.

### 2.2.4.3 *Density of Coverage*

The Bathymetric LIDAR System should be operated to provide a nominal 5 metre laser spot spacing giving flight coverage of up to 200%.

### 2.2.4.4 *System Checks*

All system checks in accordance with TENDERER's ISO 9001 quality system should be conducted.

## 2.2.5 **Data Processing**

### 2.2.5.1 *Operator Interaction*

Data should be reviewed and edited by appropriately trained personnel. The data should first be validated by TENDERER's airborne system operator to ensure the secondary data set describes the seabed to the level of precision referred to in Part 1 of this Schedule. The data should then be checked by the TENDERER's hydrographic surveyor accredited to at least IHO Category B or degree qualified surveyor, and approved by the TENDERER's field party leader accredited to IHO Category A.

### 2.2.5.2 *No Bottom at (NBA)*

Where seabed returns have not been received an appropriate NBA depth should be allocated by TENDERER's hydrographic surveyor.

### 2.2.5.3 *System Checks*

All system check results should be processed to check the tidal datum and correct system operation. This should include dynamic navigation position checks and cross line comparisons.

### 2.2.5.4 *Application of Tides*

All data should be reduced to the local vertical chart datum, details of which will be supplied by GSI prior to the commencement of survey operations. Observed tides will be applied. GSI will provide the Tenderer with a suitable Tidal Model, including access to Observed Tides, to satisfy IHO Order 1 requirements prior to the Commencement of Survey Operations. The TENDERER will be required to install gauges and collect observed tide data as required to meet the requirements of the survey. Where possible the use of tide gauges installed by GSI, should be assumed as assistance only by the TENDERER.

### 2.2.5.5 *Horizontal/Vertical Datum*

The horizontal datum of WGS 84 (ETRF 89) should be used.

Three vertical datums of Lowest Astronomical Tide (LAT), Chart Datum (CD) and Ellipsoid height should be used.

The xyz data should be delivered in WGS84 (ETRF 89) geographic coordinates (latitude, longitude and height/depth) where East and North are positive and west/south are negative with positive depths and negative heights. The data should also be projected in UTM Zone 29N and the eastings

## **INFOMAR LIDAR RFT 2009\_01**

and northings can be incorporated into the same xyz text file including reflectance and QC flags or delivered in a separate UTM projected file.

### **2.2.5.6 Location of Data Processing**

The processing, validation and data reporting may take place outside Ireland.

## **2.2.6 Logistics**

### **2.2.6.1 Field Operating Site**

Daily survey operations should take place from the closest Airport predetermined field operating site. This should be a reasonably serviced airport as close as possible to the Survey Area so as to minimise daily transit distances. All logistics for the Hydrographic Service should be managed from the field operating site by TENDERER's field Logistics Manager.

### **2.2.6.2 TENDERER Aircraft Maintenance & Operation**

TENDERER will be responsible for all aircraft maintenance and operations. GSI will assist TENDERER in obtaining clearance for aircraft operations in Irish airspace.

### **2.2.6.3 System Maintenance**

TENDERER should be responsible for all System maintenance. There should be a specialist airborne system technician and a specialist ground system technician providing preventative maintenance and minor corrective maintenance. They may be supported from the TENDERER engineering base depot.

### **3 OTHER REQUIREMENTS**

#### **3.1 Schedule of Costs**

All costs must be quoted in Euro (EUR). The overall price must be the best and final offer for the award of the contract. The schedule must take the following format:

#### **3.2 Total Cost of the Tender**

The price for each of lots A, B, C, D, E, F, G, and H and total cost of the tender (best and final offer). Total cost of tender should be entered in Form of Tender and should include mobilisation costs (see Appendix C).

#### **3.3 Detailed Costs**

An itemised breakdown of the cost of the service and of any options being proposed beyond the minimum specification should be included.

The applicable rate of VAT in respect of each product and service being proposed should be shown separately.

Details of any other costs, taxes or duties which may be incurred.

Details of any discounts which may apply.

**3.4** Tenderers must confirm that the tender holds good for 2 months after the closing date for receipt of tenders.

**3.5** Any contract that may be entered into will be specified by the GSI.

**3.6** Tenderers must state the lead time to delivery for the service.  
Tenderers should provide any other information which may be relevant to this proposal.

#### 4 EVALUATION OF TENDERS & AWARD CRITERIA

**Tenderers to whom any of the circumstances listed in paragraph 1 of Article 20 of EU Council Directive 93/36/EEC (co-ordinating procedures for the award of public supply contracts) apply should be excluded from this competition. The said circumstances are outlined at Appendix A.**

**Tenders not so excluded should be initially evaluated by reference to the following qualitative selection criteria:**

- (a) Completeness of tender documentation as specified in Sections 1 and 2 of this document, and
- (b) Stated ability of the tenderer to meet all the *minimum* requirements specified in Sections 1 and 2 of this document

Note: only tenders who meet both of the above qualifying criteria should be eligible for inclusion in the award process.

**The contract should be awarded from the qualifying tenders on the basis of the most economically advantageous tender, applying the following award criteria, with marks in brackets:**

- (1) Ability of the Tenderer to collect bathymetric data, to the specification outlined in Sections 1 and 2, from above high water mark<sup>4</sup> onshore out to at least –10m deep offshore in the survey areas. In addition, in all Bays the survey should aim to overlap with existing survey data as outlined in Section 2 above. Areas of special interest, agreed between the Contractor and the GSI, within the proposed survey lots should be surveyed to extinction **(20)**.
- (2) Ability of the Tenderer to complete the work in compliance with the stated time scales in Paragraph 2.2 **(20)**.
- (3) Reference sites to indicate similar experience in similar marine environments to the stated bays in Lot A to Lot H **(15)**.
- (4) Availability of ancillary data acquisition e.g. (digital imaging) **(10)**.
- (5) Quality of proposed work schedule and quality control measures, as requested in Paragraph 1.6 and 1.7 **(15)**.
- (6) Value for money (GSI is not obliged to accept the lowest cost) **(20)**.

---

<sup>4</sup> The Ordnance Survey Ireland (OSi) coastline of Ireland derived from their observations of high water mark will be used as the delineating line between the Topographic mapping and the Bathymetric mapping required from this proposed survey. At present this file is a 14Mb shape file of the entire coastline of Ireland. It will be made available to all tenderers who would like a copy of it. Please send your request for same to [archie.donovan@gsi.ie](mailto:archie.donovan@gsi.ie) quoting the tender reference in your request.

The topography coverage onshore has been a 10m buffer on the landward side of the OSi coastline. This 10m buffer is not a strict requirement, however, gaps in the coverage on the seaward side are not acceptable at the coastline edge and so in practice it is not unusual to gain a 10m buffer coverage on land to insure no gaps appear on the coastline edge.

**5 NOTICE TO COMPANIES TENDING**

**GENERAL CONDITIONS OF TENDER**

**Tenders should be prepared in English or Irish and are subject to the following:**

- i. This Request for Tender shall form part of the contract documents. The contract will not be concluded / take effect until 14 days after unsuccessful tenderers have been notified of the result of this tendering procedure.
- ii. Tenders must (be completed in accordance with the format specified)/ (include the information specified in Section 1, 2, and 3 above). Tenders which are incomplete will not be evaluated.
- iii. All tenderers are required to provide a statement that none of the circumstances listed in paragraphs 1 and 2 of Article 45 of EU Directive 2004/18/EC apply to them (copy of Article 45 attached at Appendix A).
- iv. Tenderers will treat the details of all documents supplied in connection with this request for tender and evaluation as private and confidential.
- v. The GSI will use its best efforts to hold confidential any information provided by tenderers subject to their obligation under law, including the Freedom of Information Act which came into force on 21 April, 1998. Tenderers should indicate, when tendering, what parts of their tenders are commercially sensitive and which they consider should be kept confidential should an FOI request be received. The GSI will consult with tenderers about any such sensitive information before making a decision on any FOI request received. Similarly, the GSI requires that all information provided pursuant to this invitation to tender will be treated in strict confidence by tenderers.
- vi. Tenderers should be aware that national legislation applies in other matters such as Official Secrets, Data Protection and Health and Safety.
- vii. Tenderers must have regard to statutory terms relating to minimum pay and to legally binding industrial or sectoral agreements in preparing tenders.
- viii. Information supplied by tenderers will be treated as contractually binding. However, the GSI reserves the right to seek clarification or verification of any such information.
- ix. Any conflicts of interest involving a tenderer must be fully disclosed to the GSI particularly where there is a conflict of interest in relation to any recommendations or proposals put forward by the tenderer. The GSI reserves the right to take whatever action it considers appropriate in the case of failure to disclose a conflict of interest or in a case of a mis-declaration of a conflict of interest.
- x. Any registerable interest involving the tenderer and the GSI, members of the Government, members of the Oireachtas or their relatives must be fully disclosed in the response to this RFT, or should be communicated to the GSI immediately upon such information becoming known to the tenderer, in the event of this information only coming to their notice after the submission of a bid and prior to the award of the contract. The terms 'registerable interest' and 'relative' shall be interpreted as per section 2 of the Ethics in Public Office Act, 1994.
- xi. Before a contract is awarded the successful tenderer (and agent, where appropriate) will be

## INFOMAR LIDAR RFT 2009\_01

required to promptly produce a **Tax Clearance Certificate**, or in the case of a non-resident tenderer, a statement from the Revenue Commissioners confirming suitability on tax grounds. Non-residents should contact the Office of the Revenue Commissioners, Revenue Residence Section, Government Offices, Nenagh Co. Tipperary. In addition, contractors must retain records of tax reference numbers for any subcontractors where payments exceed €50 (incl. VAT).

- xii. Tenderers should note that the provisions of Department of Finance Circular 22/95 apply and the GSI may require sight of Tax Clearance Certificates for any subcontractor where payments exceed €2,600. Forms are attainable from the following address: Office of the Revenue Commissioners, Sarsfield House, Limerick. Where a Tax Clearance Certificate expires within the course of the contract, the GSI reserves the right to seek a renewed certificate. All payments under the contract will be conditional on the contractor(s) being in possession of a valid certificate at all times.
- xiii. In the event of a group of respondents jointly submitting an acceptable offer, the contract will be awarded by the GSI to one contractor who acts as the agreed prime contractor. The prime contractor is responsible for the delivery of all services provided for under the terms of the contract and shall assume all the duties, responsibilities and costs associated with the position of prime contractor.
  - (a) The successful tenderer shall be responsible for the delivery of all services provided for within the contract on the basis of a fixed price agreement set at the beginning of the contract. Prices quoted in the tender cannot be increased during the currency of the tender. Similarly, terms and conditions cannot be altered.
  - (b) The GSI retains the right to withhold payment where a contractor has failed to meet his/her contractual obligations in relation to the delivery of services to an acceptable level of quality.
- xiv. The GSI will not be liable in respect of any costs incurred by tenderers in the preparation of tenders or any associated work effort.
- xv. Responses to this RFT will be evaluated in their own right. No recognition will be given to information previously submitted.
- xvi. The GSI is not bound to accept the lowest or any tender submitted.
- xvii. **Three (3) copies** of the tender in a sealed envelope, marked “**Tender for INFOMAR LIDAR RFT 2009/01**” and addressed to:
  - i. **Name** *Koen Verbruggen*
  - ii. **Address** *Geological Survey of Ireland, Beggars Bush, Haddington Rd., Dublin 4, Ireland.*And should be delivered to the above address not later than [12.00pm] on [4<sup>th</sup> December, 2009 GMT].
- xviii. Tenders delivered after this time will not be accepted.

## **INFOMAR LIDAR RFT 2009\_01**

- xix. Under EU Public Procurement Directives the GSI is required to publish a Contract Award Notice in the OJEU containing certain information, including the name of the successful tenderer, relating to the award of this contract.

Appendix A

ARTICLE 45 OF EU DIRECTIVE 2004/18/EC

Personal situation of the candidate or tenderer

1. Any candidate or tenderer who has been the subject of a conviction by definitive judgment of which the contracting authority is aware for one or more of the reasons listed below shall be excluded from participation in a public contract:

- (a) participation in a criminal organisation, as defined in Article 2(1) of Council Joint Action 98/733/JHA <sup>2</sup>;
- (b) corruption, as defined in Article 3 of the Council Act of 26 May 1997 <sup>3</sup> and Article 3(1) of Council Joint Action 98/742/JHA <sup>4</sup> respectively;
- (c) fraud within the meaning of Article 1 of the Convention relating to the protection of the financial interests of the European Communities <sup>5</sup>;
- (d) money laundering, as defined in Article 1 of Council Directive 91/308/EEC of 10 June 1991 on prevention of the use of the financial system for the purpose of money laundering <sup>6</sup>.

Member States shall specify, in accordance with their national law and having regard for Community law, the implementing conditions for this paragraph.

They may provide for a derogation from the requirement referred to in the first subparagraph for overriding requirements in the general interest.

For the purposes of this paragraph, the contracting authorities shall, where appropriate, ask candidates or tenderers to supply the documents referred to in paragraph 3 and may, where they have doubts concerning the personal situation of such candidates or tenderers, also apply to the competent authorities to obtain any information they consider necessary on the personal situation of the candidates or tenderers concerned. Where the information concerns a candidate or tenderer established in a State other than that of the contracting authority, the contracting authority may seek the cooperation of the competent authorities. Having regard for the national laws of the Member State where the candidates or tenderers are established, such requests shall relate to legal and/or natural persons, including, if appropriate, company directors and any person having powers of representation, decision or control in respect of the candidate or tenderer.

2. Any economic operator may be excluded from participation in a contract who:

- (a) is bankrupt or is being wound up, whose affairs are being administered by the court, who has entered into an arrangement with creditors, who has suspended business activities or who is in any analogous situation arising from a similar procedure under national laws and regulations;

---

<sup>2</sup> OJ L 351, 29.12.1998, p. 1.

<sup>3</sup> OJ C 195, 25.6.1997, p. 1.

<sup>4</sup> OJ L 358, 31.12.1998, p.2.

<sup>5</sup> OJ C 316, 27.11.1995, p. 48.

<sup>6</sup> OJ L 166, 28.6.1991, p. 77. Directive as amended by Directive 2001/97/EC of the European Parliament and of the Council of 4 December 2001 (OJ L 344, 28.12.2001, p. 76).

## INFOMAR LIDAR RFT 2009\_01

- (b) is the subject of proceedings for a declaration of bankruptcy, for an order for compulsory winding up or administration by the court or of an arrangement with creditors or of any other similar proceedings under national laws and regulations;
- (c) has been convicted by a judgment which has the force of res judicata in accordance with the legal provisions of the country of any offence concerning his professional conduct;
- (d) has been guilty of grave professional misconduct proven by any means which the contracting authorities can demonstrate;  
has not fulfilled obligations relating to the payment of social security contributions in accordance with the legal provisions of the country in which he is established or with those of the country of the contracting authority;
- (f) has not fulfilled obligations relating to the payment of taxes in accordance with the legal provisions of the country in which he is established or with those of the country of the contracting authority;
- (g) is guilty of serious misrepresentation in supplying the information required under this Section or has not supplied such information.

Member States shall specify, in accordance with their national law and having regard for Community law, the implementing conditions for this paragraph.

3. Contracting authorities shall accept the following as sufficient evidence that none of the cases specified in paragraphs 1 or 2(a), (b), (c), (e) or (f) applies to the economic operator:

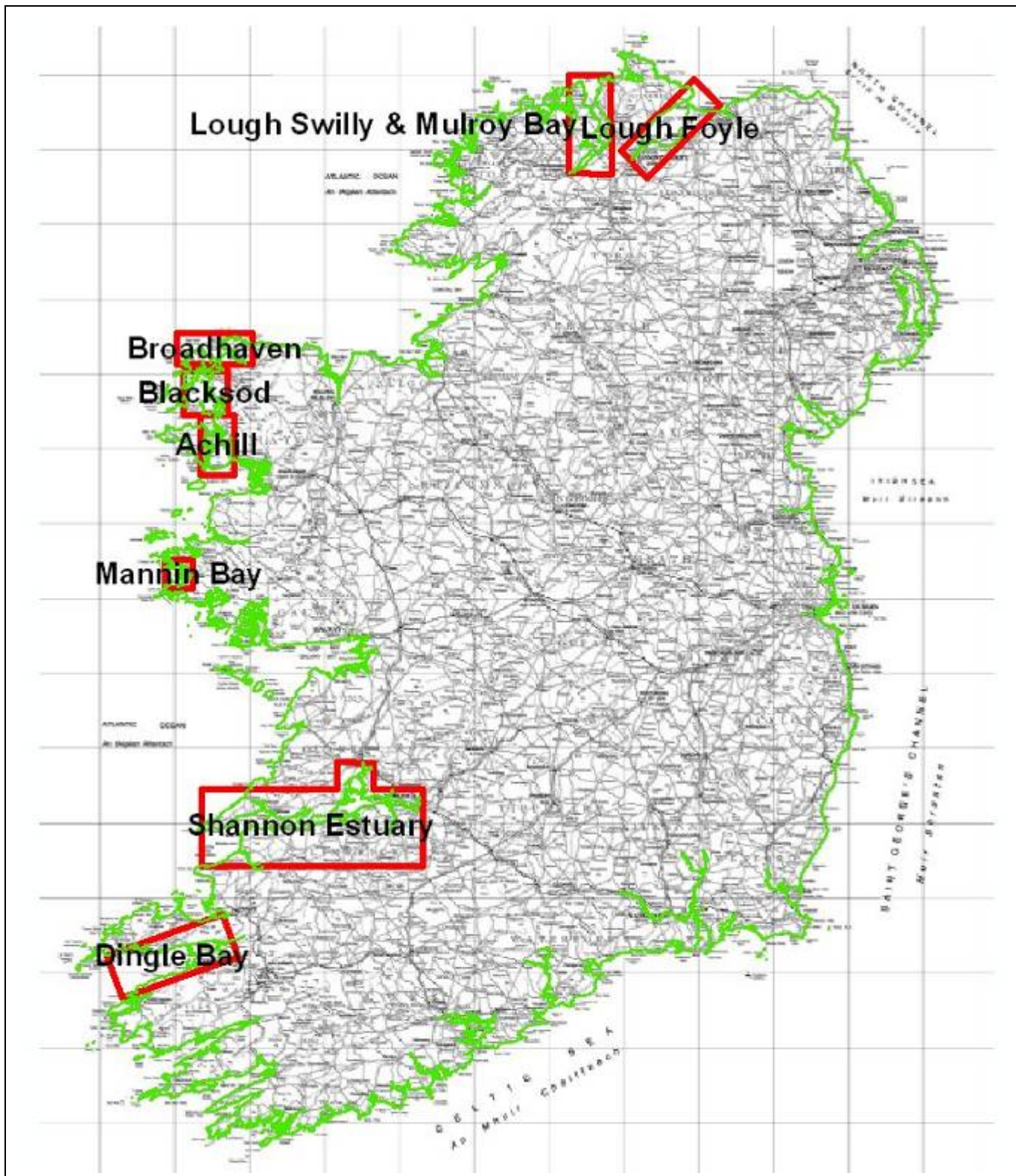
- (a) as regards paragraphs 1 and 2(a), (b) and (c), the production of an extract from the "judicial record" or, failing that, of an equivalent document issued by a competent judicial or administrative authority in the country of origin or the country whence that person comes showing that these requirements have been met;
- (b) as regards paragraph 2(e) and (f), a certificate issued by the competent authority in the Member State concerned.

Where the country in question does not issue such documents or certificates, or where these do not cover all the cases specified in paragraphs 1 and 2(a), (b) and (c), they may be replaced by a declaration on oath or, in Member States where there is no provision for declarations on oath, by a solemn declaration made by the person concerned before a competent judicial or administrative authority, a notary or a competent professional or trade body, in the country of origin or in the country whence that person comes.

4. Member States shall designate the authorities and bodies competent to issue the documents, certificates or declarations referred to in paragraph 3 and shall inform the Commission thereof. Such notification shall be without prejudice to data protection law

Appendix B

*Diagram of the survey locations within Ireland:*



**Appendix C**

Short Description of the Commission: Airborne LIDAR bathymetric survey of five bays in Ireland.

All survey and processing and reporting works in connection with:

**INFOMAR LIDAR RFT 2009/01**

TO: MINISTER FOR COMMUNICATIONS, ENERGY AND NATURAL RESOURCES

Sir,

Having examined the Tender Document for the above mentioned Works, we offer to carry out and complete the whole of the said Commission in conformity with the Tender Document for the sum of:

**LOT A**

Sum in figures Excluding VAT	€
Sum in Writing Excluding VAT	-----
Amount of VAT in figures	€
Amount of VAT in writing	-----
Sum in figures Including VAT	€
Sum in Writing Including VAT	-----

**LOT B**

Sum in figures Excluding VAT	€
Sum in Writing Excluding VAT	-----
Amount of VAT in figures	€
Amount of VAT in writing	-----
Sum in figures Including VAT	€
Sum in Writing Including VAT	-----

**LOT C**

Sum in figures Excluding VAT	€
Sum in Writing Excluding VAT	-----
Amount of VAT in figures	€
Amount of VAT in writing	-----
Sum in figures Including VAT	€
Sum in Writing Including VAT	-----

**LOT D**

Sum in figures Excluding VAT	€
Sum in Writing Excluding VAT	-----
Amount of VAT in figures	€
Amount of VAT in writing	-----
Sum in figures Including VAT	€
Sum in Writing Including VAT	-----

**LOT E**

Sum in figures Excluding VAT	€
Sum in Writing Excluding VAT	-----
Amount of VAT in figures	€
Amount of VAT in writing	-----
Sum in figures Including VAT	€
Sum in Writing Including VAT	-----

**LOT F**

Sum in figures Excluding VAT	€
Sum in Writing Excluding VAT	-----
Amount of VAT in figures	€
Amount of VAT in writing	-----
Sum in figures Including VAT	€
Sum in Writing Including VAT	-----

**LOT G**

Sum in figures Excluding VAT	€
Sum in Writing Excluding VAT	-----
Amount of VAT in figures	€
Amount of VAT in writing	-----
Sum in figures Including VAT	€
Sum in Writing Including VAT	-----

**LOT H**

Sum in figures Excluding VAT	€
Sum in Writing Excluding VAT	-----
Amount of VAT in figures	€
Amount of VAT in writing	-----
Sum in figures Including VAT	€
Sum in Writing Including VAT	-----

**ALL LOTS**

Sum in figures Excluding VAT	€
Sum in Writing Excluding VAT	-----
Amount of VAT in figures	€
Amount of VAT in writing	-----
Sum in figures Including VAT	€
Sum in Writing Including VAT	-----

**INFOMAR LIDAR RFT 2009\_01**

We undertake to complete and deliver the whole of the Works specified in the Contract within the time stated. Unless and until a formal Agreement is prepared and executed this Tender, together with your written acceptance thereof, shall constitute a binding Contract between us.

We understand that you are not bound to accept the lowest or any tender you may receive.

We are, Sir,

Yours faithfully

SIGNATURE: .....

ADDRESS: .....

.....  
.....  
.....

DATE: .....