



Accessing sub bottom data using the INFOMAR data viewer

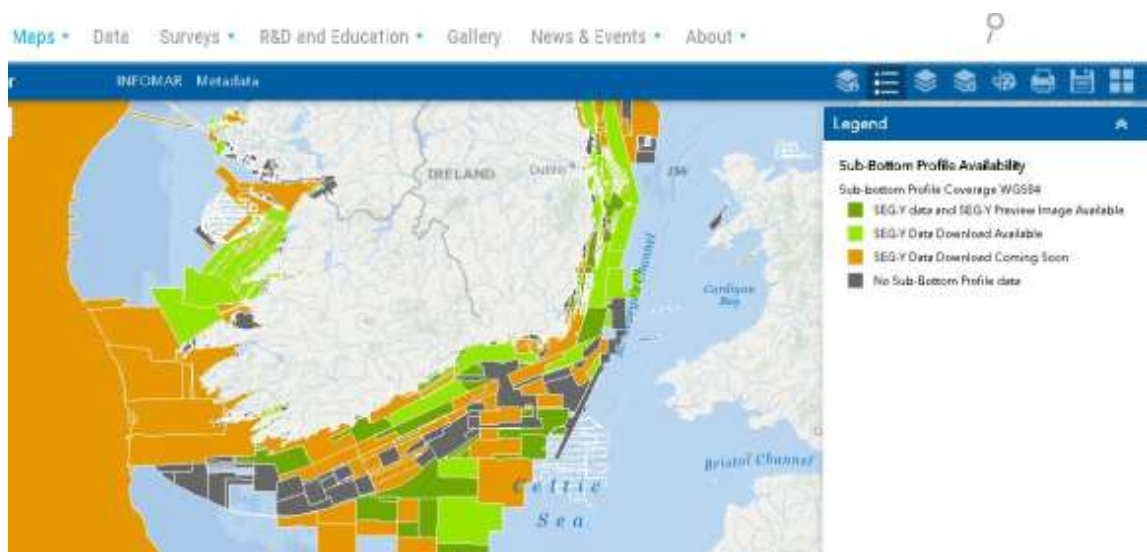


Table of Contents

1. Quick start - follow these 3 steps to access our SBP data	1
2. How much data is in these layers and what format is it available in?	2
3. Layer explanations - 'Sub Bottom Profile Tracklines'	5
4. SBP preview composite chart.....	6

1. Quick start - follow these 3 steps to access our SBP data

Step 1 – Follow the link below to access the INFOMAR data viewer

<https://www.infomar.ie/maps/interactive-maps/data-viewer>

Navigate to the layers called '**Sub Bottom Profile Availability**' and also the '**Sub Bottom Profile Tracklines**'

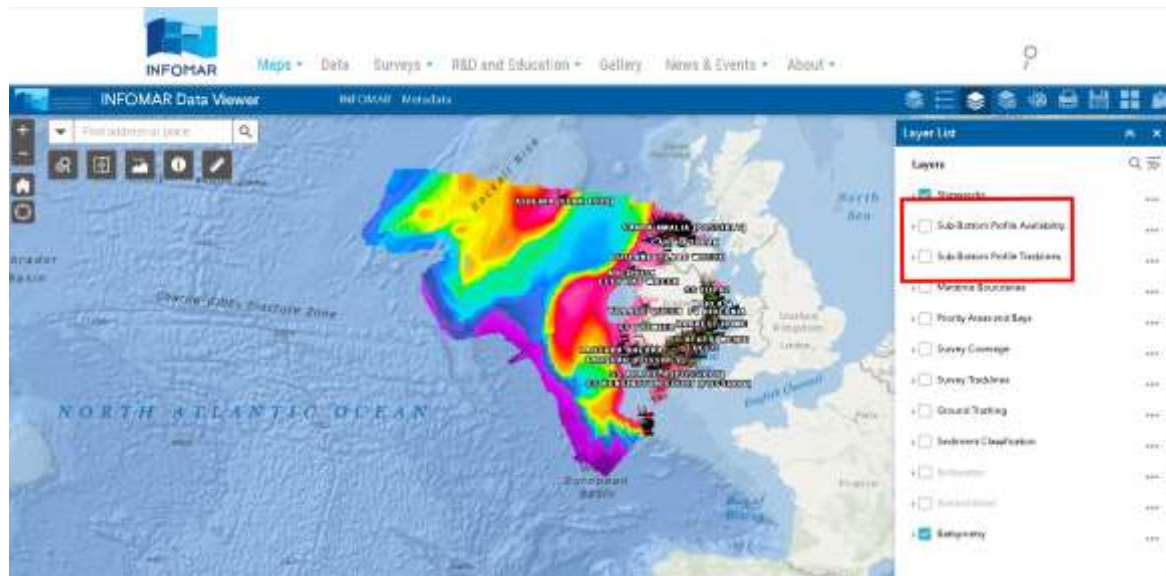


Figure 1 - Infomar data viewer - Red box indicated the 'Sub Bottom Profile Availability' layer and 'Sub Bottom Profile Track lines' layer.

Step 2 – Select the layer checkbox and view the '**Sub Bottom Profile Availability**' layer

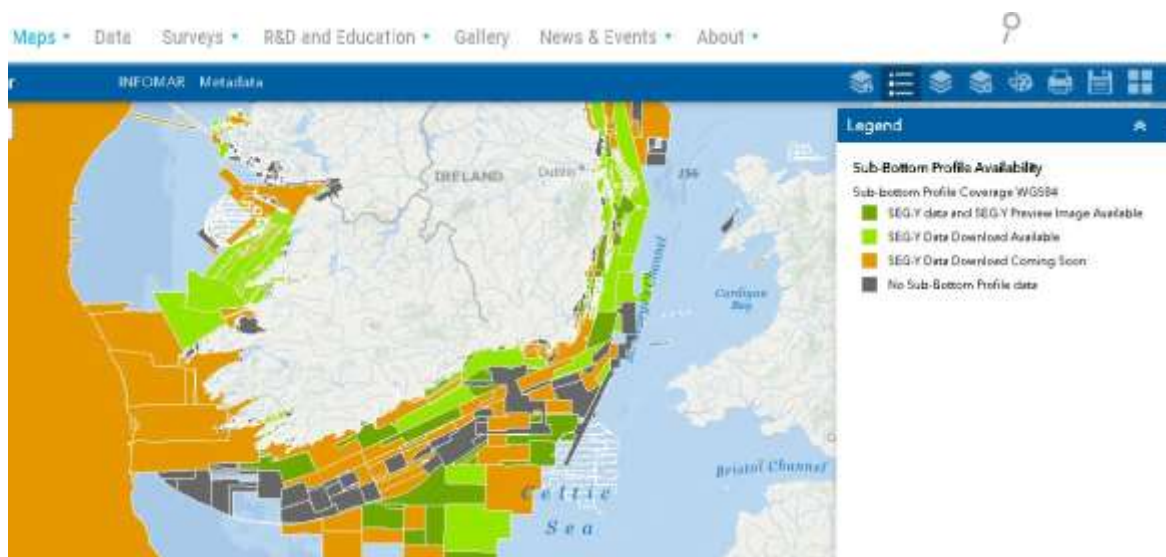


Figure 2 - Image shows the 'sub bottom profile availability' layer and the legend

Step 3 – Click on the polygons of the survey legs you are interested in and the instructions on how to access the sub bottom data will be in the pop up attributes.



Figure 3 - an example showing the attributes from the 'Sub Bottom Profile Availability' layer

2. How much data is in these layers and what format is it available in?

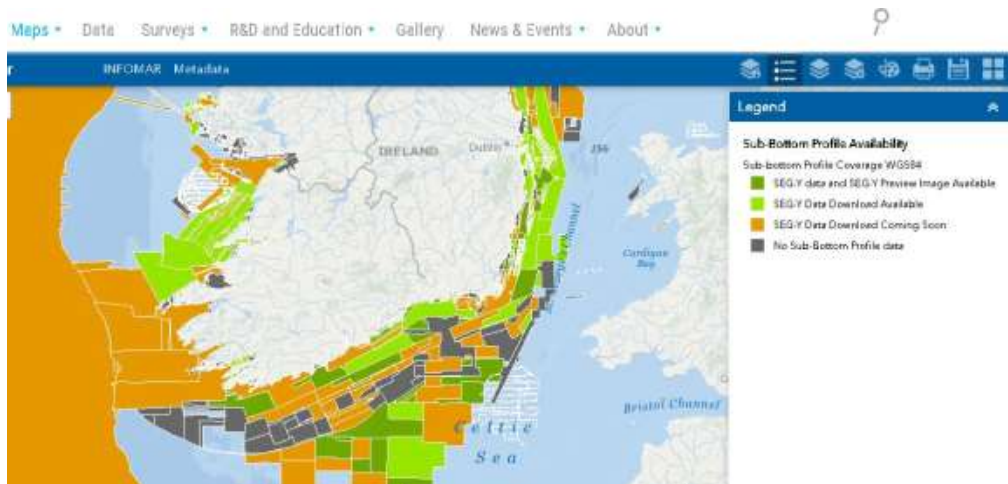


Figure 4 - shows the 'Sub Bottom Profile Availability' layer with the legend

As shown in the **'Sub Bottom Profile Availability'** there are 4 legend categories. SBP data is available for all of the polygons that are not dark grey 'No Sub Bottom Profile Data'. The instructions in the pop up will describe the specific data format available. The main goal is to convert the entire data holdings into SEG-Y format only.

Click on any polygon to see the pop up instructions.

Dark green polygons mean sub bottom preview images are available for that survey leg. To see these you will need to turn on the **'Sub Bottom Profile Tracklines'** layer.

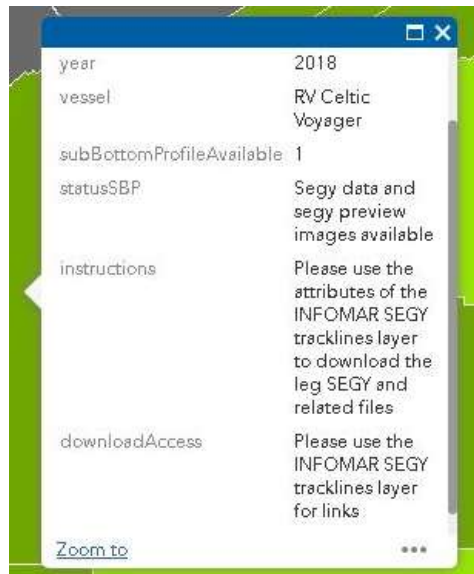


Figure 5 - shows a dark green polygon pop up from the 'Sub Bottom Profile Availability' layer

Light green polygons mean we have SEG-Y data available. The polygon below has a link to download the data in the 'download Access' field.



Figure 6 - shows a light green polygon pop up from the 'Sub Bottom Profile Availability' layer

Light green polygons may also have trackline created for them, if that is the case follow the instructions and go to the **'Sub Bottom Profile Tracklines'** layer.



Figure 7 - shows a light green polygon pop up from the 'Sub Bottom Profile Availability' layer
Orange polygon means that the data has not yet been converted to SEG-Y. This means, depending on the vessel, it will either be available in *.COD, *.JSF or *.RAW. This data needs to be requested from data@infomar.ie



Figure 8 - shows an orange polygon pop up from the 'Sub Bottom Profile Availability' layer

Dark grey polygons mean that no sub bottom data was collected on that survey.

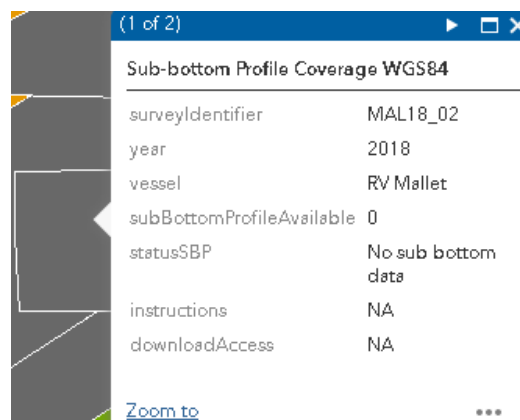


Figure 9 - shows a dark grey polygon pop up from the 'Sub Bottom Profile Availability' layer

3. Layer explanations - 'Sub Bottom Profile Tracklines'

Click on the 'Sub Bottom Profile Tracklines' checkbox to view the layer.

Note: Loading of this layer can take some time.

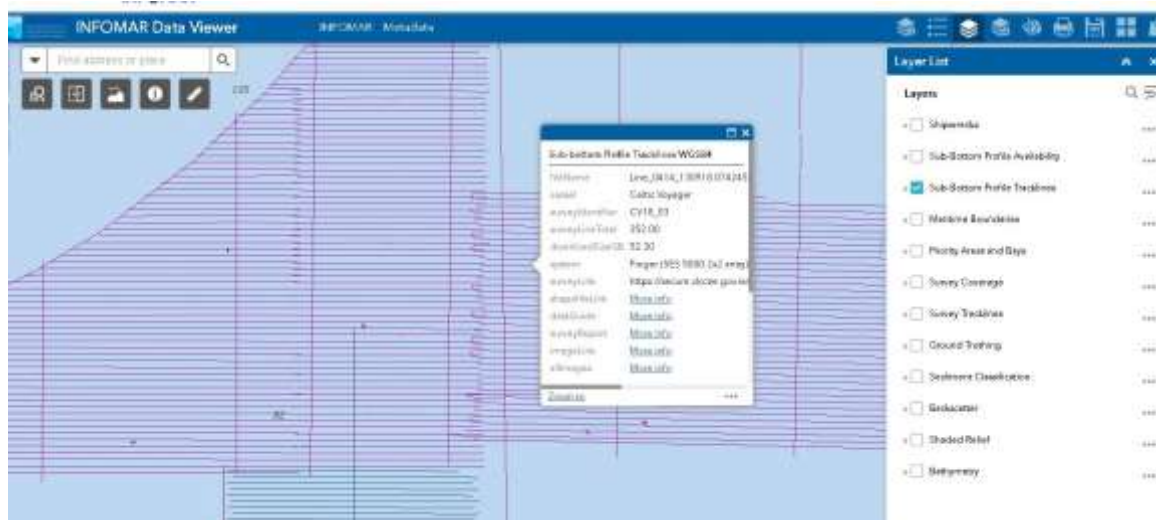


Figure 10 - shows the pop up from the tracklines in the 'Sub Bottom Profile Tracklines' layer

Once in the 'Sub Bottom Profile Tracklines' select a single trackline to access all the attributes.

The attributes include:

- FileName – the name of the SEG-Y file that generated the polyline.
- Vessel – the vessel that collected the data.
- SurveyIdentifier – the survey leg id.
- SurveyLineTotal – number of survey lines collected on the survey leg.
- DownloadSizeGB – size of the SEG-Y download in gigabytes.
- System – the name of the sub bottom acquisition equipment.
- SurveyLink – the download link for the SEG-Y data, this will be packaged up in '.Tar' file.
- ShapefileLink – download link for the shapefile of the individual leg.
- DataGuide – The data guide has more information about the SEG-Y tranformations and known data issues.
- ImageLink – when available, preview images will be visible here.
- AllImages – link to download all of the images from the survey leg in a zip file.

If a composite chart is available, the preview image will be visible. Click on the image to access the full sized version as shown below.

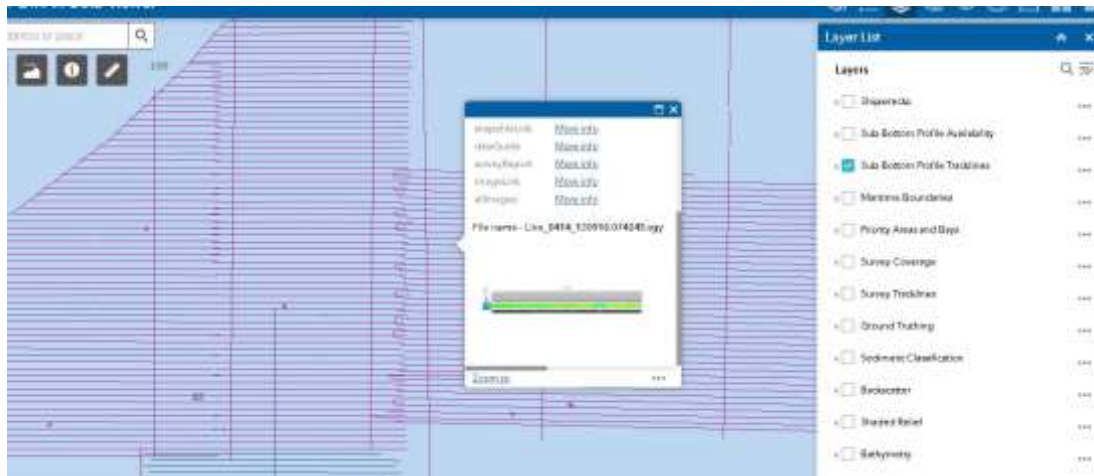


Figure 11 - shows the pop up from the tracklines in the 'Sub Bottom Profile Tracklines' layer

4. SBP preview composite chart

The preview composite charts like the one shows on the image below provide a preview of the SEG-Y data and enable users to quickly interpret the data quality. The composite charts include the survey trackline overlaid on the multibeam bathymetry and backscatter, enabling user to see the seabed geomorphology and the corresponding sub-surface structures.

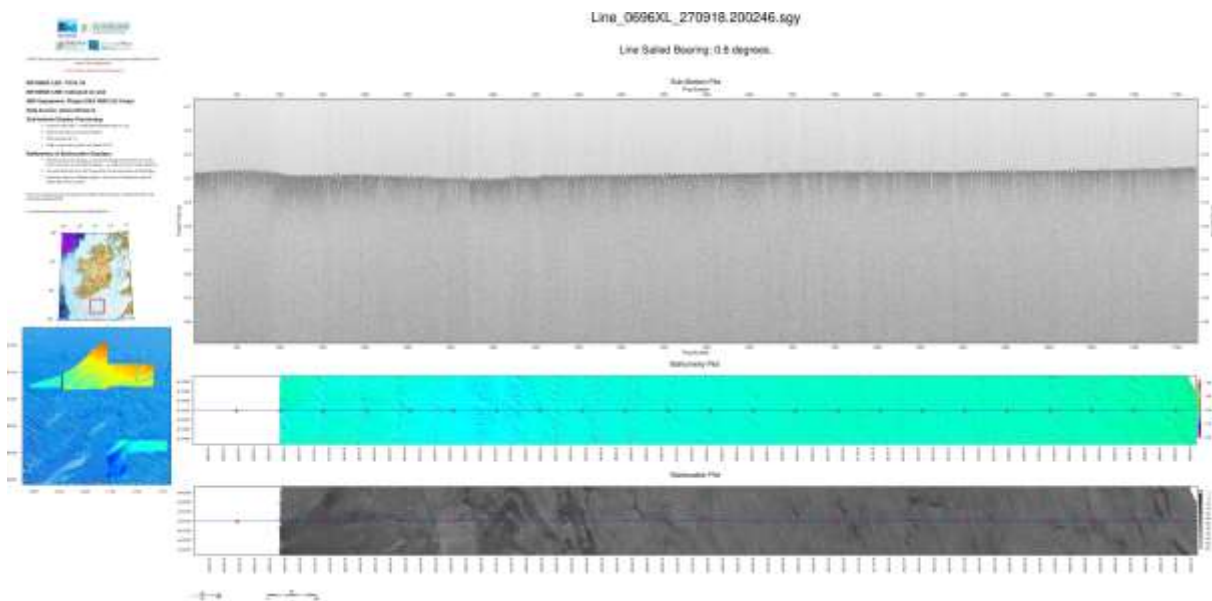


Figure 12 – preview composite chart from one of the survey track lines